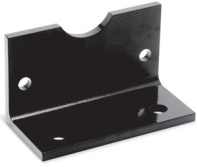


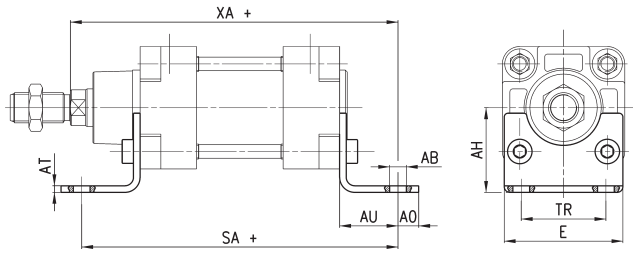
Foot mount Mod. B



Supplied with:
2x feet in black-painted steel
(cataphoresis)
4x white zinc plating screws

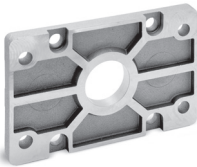
For diameters 250 and 320 white zinc plating

+ = add the stroke



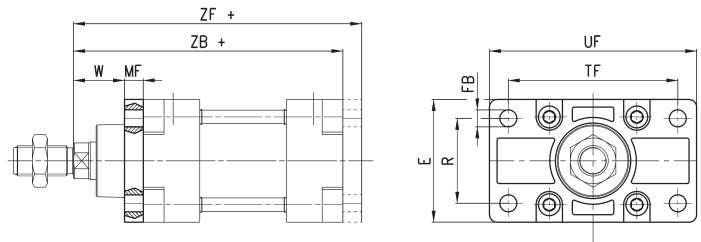
DIMENSIONS										
Mod.	∅	AT	SA+	XA+	TR	E	∅AB	AH	AO	AU
B-41-160	160	10	300	320	115	175	18.5	115	25	60
B-41-200	200	12	320	345	135	238	24	135	35	70
B-41-250	250	14	350	380	165	270	26	165	25	75
B-41-320	320	20	390	425	200	353	35	200	45	85

Front and rear flange Mod. D-E



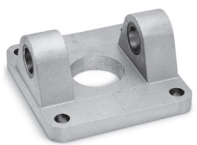
Supplied with:
1x flange
4x screws

+ = add the stroke



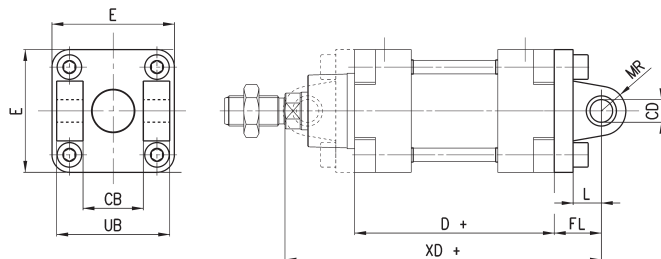
DIMENSIONS											
Mod.	∅	W	MF	ZB+	TF	R	UF	E	∅FB	ZF+	Material
D-E-41-160	160	60	20	260	230	115	276	175	18	280	aluminium
D-E-41-200	200	70	25	275	270	135	312	215	22	300	aluminium
D-E-41-250	250	80	25	305	330	165	400	285	26	330	zinc-plated steel
D-E-41-320	320	90	30	340	400	200	470	334	33	370	stainless steel 304

Front and rear female trunnion Mod. C-H



Supplied with:
1x female trunnion in Aluminium
4x screws

+ = add the stroke



DIMENSIONS										
Mod.	∅	∅CD	L	FL	D+	XD+	MR	E	CB	UB
C-H-41-160	160	30	35	55	180	315	30	175	90	170
C-H-41-200	200	30	35	60	180	335	30	215	90	170
C-H-41-250	250	40	45	70	200	375	40	270	110	200
C-H-41-320	320	45	50	80	220	420	45	350	120	220