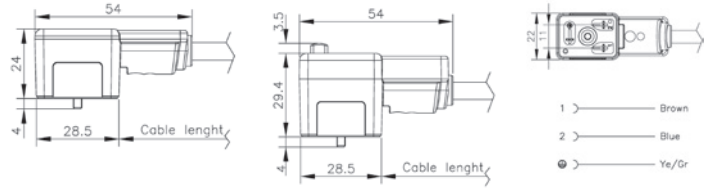


Industrial Form B (11mm pin spacing) 6 O'Clock Earth



- ✓ Ex Stock
- 🔧 UK Assembly
- 📞 Please Call Sales Office

Industrial Form B (11mm pin spacing) 6 O'Clock Earth		Type	Cable
Part Number	Availability	(LED Voltage AC/DC)	Length
MB136000PA05100	🕒	Cable Connector only	1M
MB136000PA05300	✓	Cable Connector only	3M
MB636V54PA05100	🕒	Cable Connector (24V LED)	1M
MB636V54PA05300	🕒	Cable Connector (24V LED)	3M
MB636V55PA05100	🕒	Cable Connector (115V LED)	1M
MB636V55PA05300	🕒	Cable Connector (115V LED)	3M
MB636V56PA05100	🕒	Cable Connector (230V LED)	1M
MB636V56PA05300	🕒	Cable Connector (230V LED)	3M

Use with Camozzi Series A, series AP, Series 3, Series 4 and ISO valves and NAMUR Valves

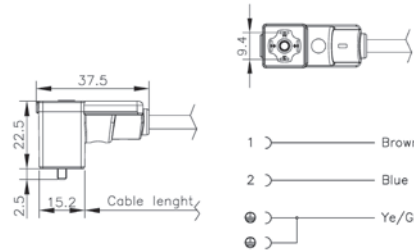
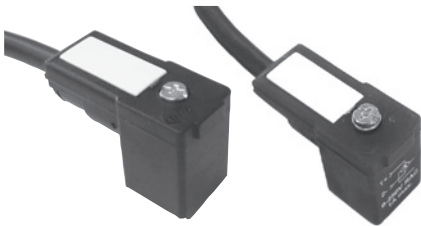
Technical Data

Type
Moulded cable connectors: Standard, mini and micro

Operating Temperature
-40°C to +90°C.

Materials
Connectors: TPU
Cable: PVC standard
Integrated gasket: TPU
Screw: Form A and B (with LED) - M3 x 28.5mm. Form A and B (non LED) - M3 x 25mm
Industrial Form C M3 x 23mm
Form C M2.5 x 23mm

Industrial Form C (9.4mm pin spacing) Double Earth



Industrial Form C (9.4mm pin spacing) Double Earth		Type	Cable
Part Number	Availability	(LED Voltage AC/DC)	Length
MD134000PA01100	🕒	Cable Connector only	1M
MD134000PA01300	✓	Cable Connector only	3M
MD634V54TA01100	✓	Cable Connector (24V LED)	1M
MD634V54TA01300	✓	Cable Connector (24V LED)	3M
MD634V55TA01100	🕒	Cable Connector (115V LED)	1M
MD634V55TA01300	🕒	Cable Connector (115V LED)	3M
MD634V56TA01100	🕒	Cable Connector (230V LED)	1M
MD634V56TA01300	🕒	Cable Connector (230V LED)	3M

Use with Camozzi Series E, and Series P valves

Insulation Group

VDE 0110 1/89 - Class C

Voltage
Up to 250V AC or DC unless otherwise stated
Other voltages available on request

Current
5A - Form A and B
3A - Form C

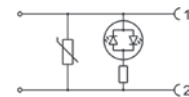
Contact Resistance
≤4mΩ

Protection Rating

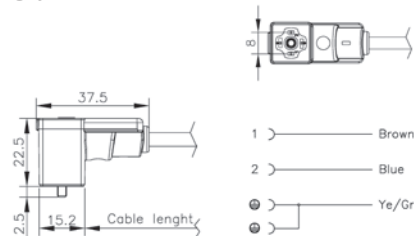
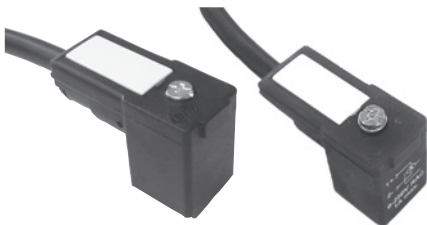
IP67
Standard Cable
3 x 0.75mm² conductors PVC H05 VVF (Form A and B)
3 x 0.50mm² conductors PVC H03 VVF (Form C)

LED Circuit Function

Where an LED is required, the standard control circuit contains an amber bipolar LED to confirm supply voltage, and VDR (varistor) which protects the supply and load from over voltage.
The circuit can be used for AC or DC supply at the stated voltage.



Industrial Form C (8mm pin spacing) Double Earth



Industrial Form C (8mm pin spacing) Double Earth		Type	Cable
Part Number	Availability	(LED Voltage AC/DC)	Length
MC134000PA01100	🕒	Cable Connector only	1M
MC134000PA01300	✓	Cable Connector only	3M
MC634V54TA01100	🕒	Cable Connector (24V LED)	1M
MC634V54TA01300	🕒	Cable Connector (24V LED)	3M
MC634V55TA01100	🕒	Cable Connector (115V LED)	1M
MC634V55TA01300	🕒	Cable Connector (115V LED)	3M
MC634V56TA01100	🕒	Cable Connector (230V LED)	1M
MC634V56TA01300	🕒	Cable Connector (230V LED)	3M

Use with Camozzi Series W valves

Options

Additional cable types and lengths. LED in red or green. Additional control circuit functions available. For solenoid connectors with cable gland entry, pages 134-135. For proximity switches, see page 45

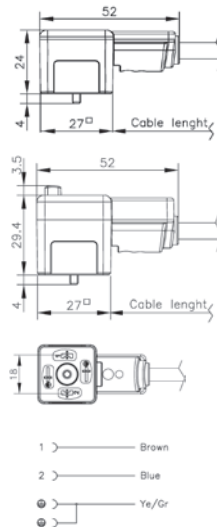
Special Requests
For assistance, contact our technical office or your local Camozzi distributor.

Solenoid DIN Connectors - with Moulded Cable

Moulded cable assemblies EN175301-803 (Formerly DIN43650)

The Camozzi range of DIN moulded cable connectors offers a fast and efficient method of connection, resulting in reduced installation time and cost.

Form A (18mm pin spacing) Double Earth

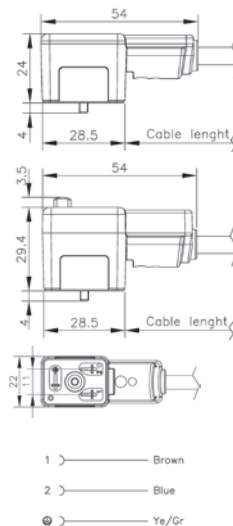


- ✓ Ex Stock
- ✍ UK Assembly
- 📞 Please Call Sales Office

Form A (18mm pin spacing) Double Earth		Type	Cable Length
Part Number	Availability	(LED Voltage AC/DC)	
MA134000PA05100	✓	Cable Connector only	1M
MA134000PA05300	✓	Cable Connector only	3M
MA634V54PA05100	📞	Cable Connector (24V LED)	1M
MA634V54PA05300	✓	Cable Connector (24V LED)	3M
MA634V55PA05100	📞	Cable Connector (115V LED)	1M
MA634V55PA05300	📞	Cable Connector (115V LED)	3M
MA634V56PA05100	📞	Cable Connector (230V LED)	1M
MA634V56PA05300	📞	Cable Connector (230V LED)	3M

Use with Camozzi Series 4 valves - 1/2, series 6 and A80 coils

Industrial Form B (11mm Pin Spacing) 12 O'Clock Earth



- ✓ Ex Stock
- ✍ UK Assembly
- 📞 Please Call Sales Office

Industrial Form B (11mm Pin Spacing) 12 O'Clock Earth		Type	Cable Length
Part Number	Availability	(LED Voltage AC/DC)	
MB135000PA05100	✓	Cable Connector only	1M
MB135000PA05300	✓	Cable Connector only	3M
MB635V54PA05100	✓	Cable Connector (24V LED)	1M
MB635V54PA05300	✓	Cable Connector (24V LED)	3M
MB635V55PA05100	📞	Cable Connector (115V LED)	1M
MB635V55PA05300	📞	Cable Connector (115V LED)	3M
MB635V56PA05100	📞	Cable Connector (230V LED)	1M
MB635V56PA05300	📞	Cable Connector (230V LED)	3M

Use with Camozzi Series A, series AP, series 3, series 4 and ISO valves - 1/2, series 6 and A80 coils

Technical Data

Type

Moulded cable connectors: Standard, mini and micro

Operating Temperature

-40°C to +90°C

Materials

Connectors: TPU

Cable: PVC standard

Integrated gasket: TPU

Screw: Form A and B (with LED) - M3 x 28.5mm. Form A and B (non LED) - M3 x 25mm

Industrial Form C M3 x 23mm

Form C M2.5 x 23mm

Insulation Group

VDE 0110 1/89 - Class C

Voltage

Up to 250V AC or DC unless otherwise stated

Other voltages available on request

Current

5A - Form A and B

3A - Form C

Contact Resistance

≤4mΩ

Protection Rating

IP67

Standard Cable

3 x 0.75mm² conductors PVC H05 VVF

(Form A and B)

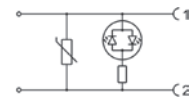
3 x 0.50mm² conductors PVC H03 VVF

(Form C)

LED Circuit Function

Where an LED is required, the standard control circuit contains an amber bipolar LED to confirm supply voltage, and VDR (varistor) which protects the supply and load from over voltage.

The circuit can be used for AC or DC supply at the stated voltage.



Options

Additional cable types and lengths.

LED in red or green. Additional control circuit functions available.

For solenoid connectors with cable gland entry, pages 134-135.

For proximity switches, see page 45

For assistance, contact our technical office or your local Camozzi distributor.

For proximity switches, see page 45

For assistance, contact our technical office or your local Camozzi distributor.

For assistance, contact our technical office or your local Camozzi distributor.

For assistance, contact our technical office or your local Camozzi distributor.

For assistance, contact our technical office or your local Camozzi distributor.

For assistance, contact our technical office or your local Camozzi distributor.

For assistance, contact our technical office or your local Camozzi distributor.

For assistance, contact our technical office or your local Camozzi distributor.

For assistance, contact our technical office or your local Camozzi distributor.

For assistance, contact our technical office or your local Camozzi distributor.

For assistance, contact our technical office or your local Camozzi distributor.

For assistance, contact our technical office or your local Camozzi distributor.

For assistance, contact our technical office or your local Camozzi distributor.

For assistance, contact our technical office or your local Camozzi distributor.

For assistance, contact our technical office or your local Camozzi distributor.

For assistance, contact our technical office or your local Camozzi distributor.