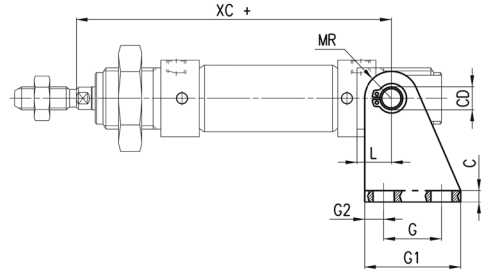
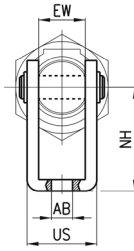


Rear trunnion bracket Mod. I



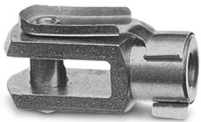
Supplied with:
1x zinc-plated steel rear trunnion
1x stainless steel clevis pin
2x steel Seeger



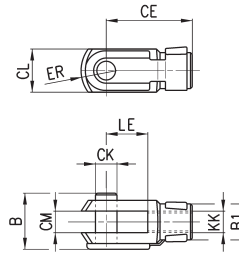
+ = add the stroke

DIMENSIONS													
Mod.	∅	EW	∅AB	US	NH	XC+	MR	L	G2	G	G1	CD	C
I-8-10	8-10	8	4,5	13,1	24	64	5	6	3,5	12,5	20	4	2,5
I-12-16	12	12	5,5	18,1	27	75	7	9	5	15	25	6	3
I-12-16	16	12	5,5	18,1	27	82	7	9	5	15	25	6	3
I-20-25	20	16	6,6	24,1	30	95	10	12	6	20	32	8	4
I-20-25	25	16	6,6	24,1	30	104	10	12	6	20	32	8	4

Rod fork end Mod. G



ISO 8140
Material: zinc-plated steel.

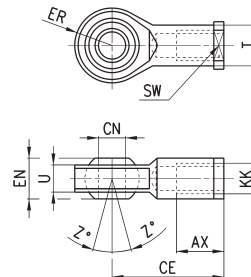


DIMENSIONS											
Mod.	∅	CL	ER	CE	B	CM	∅CK	LE	KK	∅B1	
G-8-10	8-10	8	5	16	11	4	4	8	M4x0,7	8	
G-12-16	12-16	12	7	24	16	6	6	12	M6x1	10	
G-20	20	16	10	32	22	8	8	16	M8x1,25	14	
G-25-32	25	20	12	40	26	10	10	20	M10x1,25	18	

Swivel ball joint Mod. GA



ISO 8139
Material: zinc-plated steel.



DIMENSIONS											
Mod.	∅	$\theta_{CN}^{(H7)}$	U	EN	ER	AX	CE	KK	ØT	Z	SW
GA-8-10	8-10	5	6	8	9	10	27	M4x0.7	9	6.5°	9
GA-12-16	12-16	6	7	9	10	12	30	M6X1	10	6.5°	11
GA-20	20	8	9	12	12	16	36	M8X1.25	12.5	6.5°	14
GA-32	25	10	10.5	14	14	20	43	M10X1.25	15	6.5°	17