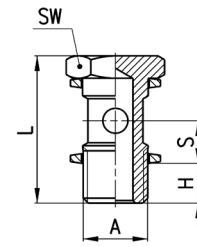


### Fittings Mod. 1631 01

Single Banjo Stem



Assembled with adjustable fittings Mod. 6610; 6620; 1610; 1620; 2023; 1170



DIMENSIONS						
Mod.	A	H	L	S	SW	Weight (g)
1631 01-M5	M5	4	18	5,5	8	3 *
1631 01-1/8	G1/8	6	27	8,5	14	13
1631 01-1/4	G1/4	8	29,5	8,5	17	24
1631 01-3/8	G3/8	8	30	8,5	19	35
1631 01-1/2	G1/2	9	31	8,5	27	63

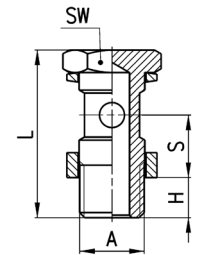
\* = zinc-plated steel

### Fittings Mod. 1635 01

Single Long Banjo Stem



Assembled with adjustable fittings Mod. 6610; 6620; 1610; 1620; 2023; 1170



DIMENSIONS						
Mod.	A	H	L	S	SW	Weight (g)
1635 01-1/8	G1/8	6	31	12,5	14	15
1635 01-1/4	G1/4	8	33,5	12,5	17	27
1635 01-3/8	G3/8	8	34	12,5	19	37
1635 01-1/2	G1/2	9	35	12,5	27	71
1635 01-M12x1,25	M12x1,25	8	33,5	12,5	17	27 *
1635 01-M12x1,5	M12x1,5	8	33,5	12,5	17	27 *

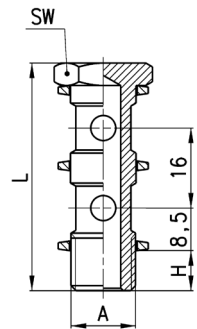
\* = models that can be assembled with 1/4 banjo fittings

### Fittings Mod. 1631 02

Double Banjo Stem



Assembled with adjustable fittings Mod. 6610; 6620; 1610; 1620; 2023; 1170



DIMENSIONS					
Mod.	A	H	L	SW	Weight (g)
1631 02-1/8	G1/8	6	43	14	18
1631 02-1/4	G1/4	8	45,5	17	33
1631 02-3/8	G3/8	8	46	19	48