

VNV from M5 to G1/2, Male - Female thread



Drawing note:
A = air flow direction during suction

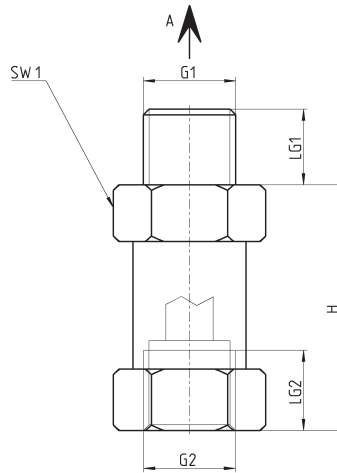
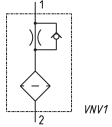


Table note:
* M = Male thread
* F = Female thread



DIMENSIONS							
Mod.	G1*	G2*	H	LG1	LG2	H	SW1
VNV-MF-M5	M 5 M	M 5 F	15.5	4.5	4.5		8
VNV-MF-1/8	G1/8 M	G1/8 F	26	8.5	8		14
VNV-MF-1/4	G1/4 M	G1/4 F	26	11	10		17
VNV-MF-3/8	G3/8 M	G3/8 F	29	10	12		22
VNV-MF-1/2	G1/2 M	G1/2 F	29	14	12		27

VNV from G1/8 to G1/2 - Female - Male thread



Drawing note:
A = air flow direction during suction

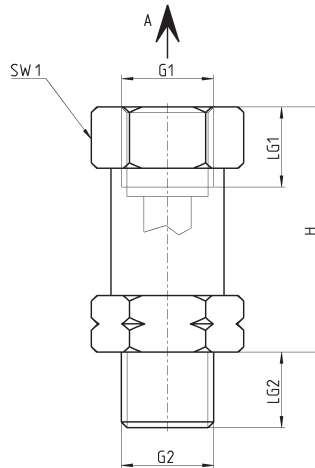
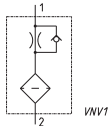


Table note:
* M = Male thread
* F = Female thread



DIMENSIONS							
Mod.	G1*	G2*	H	LG1	LG2	H	SW1
VNV-FM-1/8	G1/8 F	G1/8 M	26	8	8,5		14
VNV-FM-1/4	G1/4 F	G1/4 M	26	10	11		17
VNV-FM-1/2	G1/2 F	G1/2 M	29	12	14		27