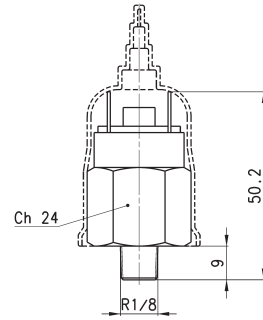


Series PM adjustable-diaphragm pressure switches



Supplied with a rubber cap providing protection class IP54.



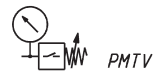
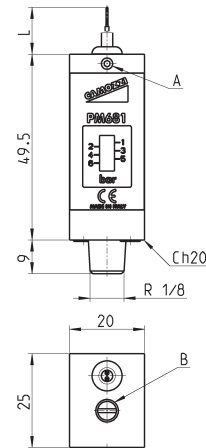
Mod.	Function	Max Voltage	Max Power	Service Type	Insulation voltage	Symbol
PM11-NC	NC = normally closed	48 V AC DC	24 VA	Heavy	500 V	PMNC
PM11-NA	NA = normally open	48 V AC DC	24 VA	Heavy	500 V	PMNO

PMNC = normally closed
PMNO = normally open

Series PM681-... - pressure switches with setting visual scale



In compliance with EN60730 standard
Protection class IP40
Electric connection: PVC cable 2 x 0.22 mm
Electric contact: Reed SPST NO
Body in anodized aluminium and threaded fitting in brass
Hysteresis: 0.8 bar max



Mod.	L	Max switch voltage	Max switch current	Max switch capacity	Max fluid temperature	Max pressure	Setting range	Weight
PM681-1	1 m	48 V	0.5 A	10 W	60°C	20 bar	1 ÷ 6 bar	95 g
PM681-3	3 m	48 V	0.5 A	10 W	60°C	20 bar	1 ÷ 6 bar	95 g

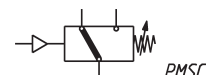
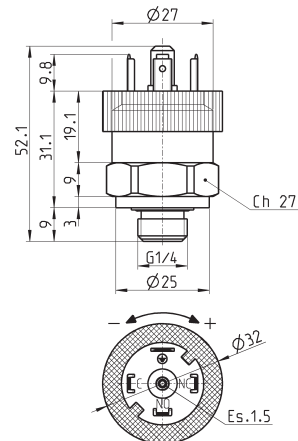
A = SETTING GRAIN LOCKING

B = ADJUSTMENT SCREW

Pressure switch with exchange contacts Mod. PM11-SC



Protection class IP65
(with connector Mod. 124-830)



DIMENSIONS							
Mod.	Function	Max Voltage	Operating Temperature	Actuation time	Setting range	Max Hysteresis	
PM11-SC	SC (*)	250V AC - 30V DC	-25°C +85°C	> 0,1 ms	2 ÷ 10 bar	0.8 bar	

(*) SC = exchange contacts