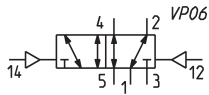
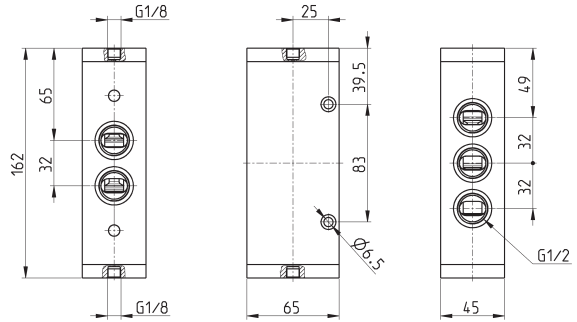


5/2-way valve, G1/2 port, bistable Mod. 452N-33



Mod.	Mounting	Function	Flow rate Qn (NL/min)	min. pilot Pressure (bar)	Working pressure (bar)	Symbol
452N-33	in-line	5/2	4000	2	-0.9 ÷ 10	VP06

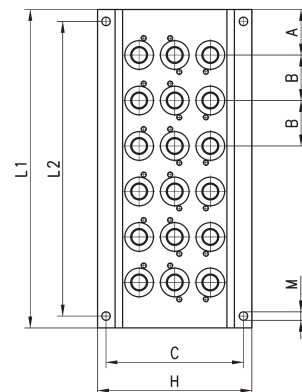
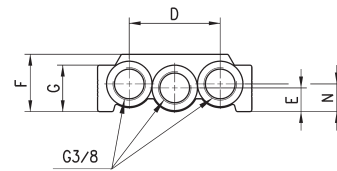
Manifold base with common exhausts



For valves Series 4, G1/8 (3/2, 5/2 or 5/3-way)

The following is supplied with:

- 1x manifold
- 1x pair of fixing screws for valve position
- 1x interface seal for valve positions
- 2x guides for valve position

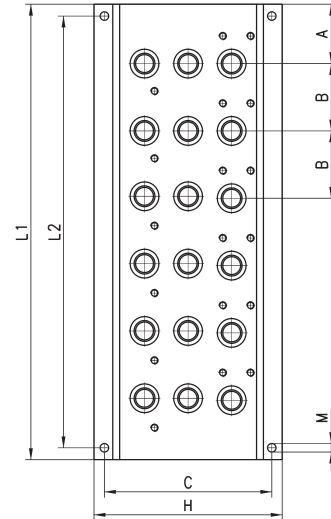
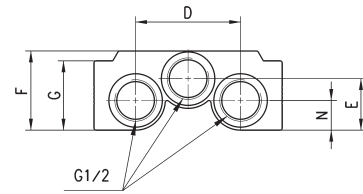


DIMENSIONS												
Mod.	A	B	C	D	E	F	G	H	L1	L2	M	N
CNVL-42	28	33	69.5	46	12	29	23.5	78	89	77	4.3	14
CNVL-43	28	33	69.5	46	12	29	23.5	78	122	110	4.3	14
CNVL-44	28	33	69.5	46	12	29	23.5	78	155	143	4.3	14
CNVL-45	28	33	69.5	46	12	29	23.5	78	188	176	4.3	14
CNVL-46	28	33	69.5	46	12	29	23.5	78	221	209	4.3	14

Manifold base with common exhausts



For valves Series 4, G1/4 (3/2, 5/2 or 5/3-way)
 The following is supplied :
 1x manifold
 1x pair of fixing screws for valve position
 1x interface seal for valve positions
 2x guides for valve position



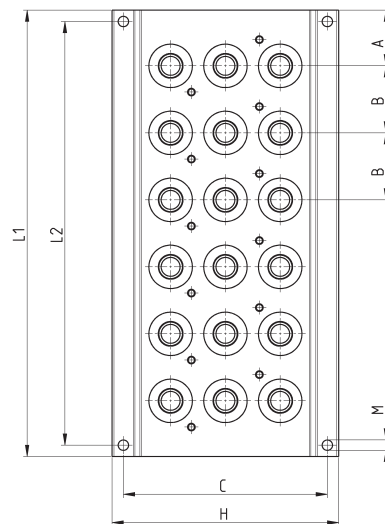
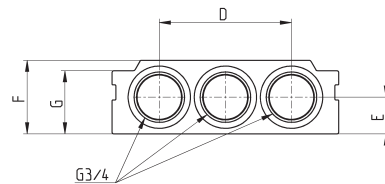
DIMENSIONS												
Mod.	A	B	C	D	E	F	G	H	L1	L2	M	N
CNVL-52	30	34	84.5	53	26	40	35	95	94	82	4.3	15
CNVL-53	30	34	84.5	53	26	40	35	95	128	116	4.3	15
CNVL-54	30	34	84.5	53	26	40	35	95	162	150	4.3	15
CNVL-55	30	34	84.5	53	26	40	35	95	196	184	4.3	15
CNVL-56	30	34	84.5	53	26	40	35	95	230	218	4.3	15

Manifold base with common exhausts

New



For valves Series 4, G3/8 (3/2, 5/2 or 5/3-way)
 The following is supplied with:
 1x manifold
 1x pair of fixing screws for valve position
 1x interface seal for valve positions
 2x guides for valve position



Mod.	A	B	C	D	E	F	G	H	L1	L2	M
CNVL-62	29.5	35	108	70	19.5	39	33.5	120	94.5	82.5	5.5
CNVL-63	29.5	35	108	70	19.5	39	33.5	120	130	118	5.5
CNVL-64	29.5	35	108	70	19.5	39	33.5	120	166	154	5.5
CNVL-65	29.5	35	108	70	19.5	39	33.5	120	201	189	5.5
CNVL-66	29.5	35	108	70	19.5	39	33.5	120	237	225	5.5