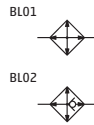


Series MX Take-off Blocks

Connections: MX2=1/2 MX3=1
Modular



- ✓ Ex Stock
- ✎ UK Assembly
- ☎ Please Call Sales Office

CODING EXAMPLE

MX	2	-	1/2	-	B	00	-	LH
-----------	----------	----------	------------	----------	----------	-----------	----------	-----------

MX	SERIES: MX		
2	SIZE: 2 = 1/2 3 = 1	00	DESIGN TYPE: 00 = without no return valve (standard) 01 = with no return valve 02 = without no return valve, with double O-ring seat
1/2	CONNECTIONS: 1/2, 1		
B	TAKE-OFF BLOCK	LH	FLOW DIRECTION: = from left to right (standard) LH = from right to left

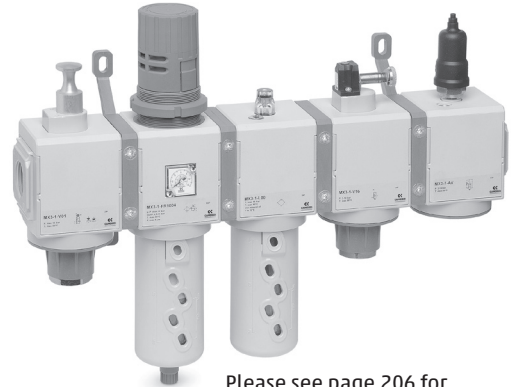
	Availability	Symbol	MX2	MX3
Take-off Blocks			1/2	1
Without no return valve	✓	BL01	MX2-1/2-B00	MX3-1-B00
With no return valve	✓	BL02	MX2-1/2-B01	MX3-1-B01

Please see page 206 for Series MX Accessories

Series MX FRL Assembled

Connections MX2=3/8, 1/2, 3/4 MX3=3/4, 1
Assembly through rapid clamps

The FRL Series MX can be easily assembled through rapid clamps which allow the connection among single components creating an unlimited number of compositions.
The FRL groups Series MX are also available in the already mounted version (with a single code).



Please see page 206 for additional Series MX accessories

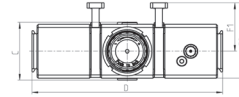
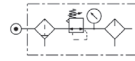
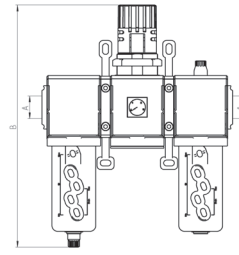
CODING EXAMPLE

MX	2	-	3/8	-	000014	-	LH
-----------	----------	----------	------------	----------	---------------	----------	-----------

MX	SERIES: MX		
2	SIZE: 2 = 3/8 - 1/2 - 3/4 3 = 3/4 - 1	000014	LH FLOW DIRECTION: = from left to right (standard) LH = from right to left
3/8	CONNECTIONS: 3/8 = 3/8 1/2 = 1/2 3/4 = 3/4 1 = 1	GROUP COMPOSITION (WITH BUILT IN PRESSURE GAUGE): 000014 = F00 + R004 + L00 000015 = FR0004 + L00 000016 = V01 + FR0004 + L00 000017 = V01 + FR0004 000018 = FR0004 + V16 + AV 000019 = FR0004 + L00 + V16 + AV 000020 = V01 + FR0004 + V16 + AV 000021 = V01 + FR0004 + L00 + V16 + AV + PRESS. NO 000022 = V01 + FR0004 + L00 + V16 + AV + PRESS. NC 000023 = V01 + FR0004 + V16 + AV + PRESS. NO 000024 = V01 + FR0004 + V16 + AV + PRESS. NC GROUP COMPOSITION (WITH EXTERNAL PRESSURE GAUGE): 000025 = F00 + R000 + L00 000026 = FR0000 + L00 000027 = V01 + FR0000 + L00 000028 = V01 + FR0000 000029 = FR0000 + V16 + AV 000030 = FR0000 + L00 + V16 + AV 000031 = V01 + FR0000 + V16 + AV 000032 = V01 + FR0000 + L00 + V16 + AV + PRESS. NO 000033 = V01 + FR0000 + L00 + V16 + AV + PRESS. NC 000034 = V01 + FR0000 + V16 + AV + PRESS. NO 000035 = V01 + FR0000 + V16 + AV + PRESS. NC 000036 = F13 + FC03	

Composition of the assembled group 000014 and 000025

- Components:
- Filter
- Regulator
- Lubricator
- Pressure Gauge
- Bracket



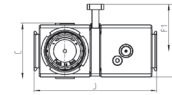
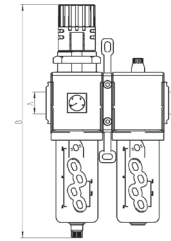
- ✓ Ex Stock
- ✎ UK Assembly
- ⓞ Please Call Sales Office

WITH BUILT IN PRESSURE GAUGE							
Part Number	Availability	A	B	C	D	F1	F2
MX2-3/8-000014	✎	3/8	289	74.5	210	70	104.5
MX2-1/2-000014	✎	1/2	289	74.5	210	70	104.5
MX2-3/4-000014	✎	3/4	289	74.5	210	70	104.5
MX3-3/4-000014	✎	3/4	345	81	268.5	68	106
MX3-1-000014	✎	1	345	81	268.5	68	106

WITH EXTERNAL PRESSURE GAUGE							
Part Number	Availability	A	B	C	D	F1	F2
MX2-3/8-000025	✎	3/8	289	74.5	210	70	104.5
MX2-1/2-000025	✎	1/2	289	74.5	210	70	104.5
MX2-3/4-000025	✎	3/4	289	74.5	210	70	104.5
MX3-3/4-000025	✎	3/4	345	81	268.5	68	106
MX3-1-000025	✎	1	345	81	268.5	68	106

Composition of the assembled group 000015 and 000026

- Components:
- Filter-regulator
- Lubricator
- Pressure Gauge
- Bracket



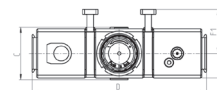
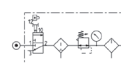
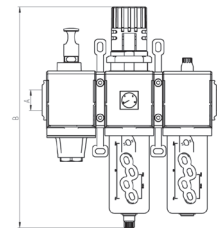
- ✓ Ex Stock
- ✎ UK Assembly
- ⓞ Please Call Sales Office

WITH BUILT IN PRESSURE GAUGE							
Part Number	Availability	A	B	C	D	F1	F2
MX2-1/2-000015	✎	3/8	289	74.5	140	70	104.5
MX2-3/8-000015	✎	1/2	289	74.5	140	70	104.5
MX2-3/4-000015	✎	3/4	289	74.5	140	70	104.5
MX3-3/4-000015	✎	3/4	345	81	179	68	106
MX3-1-000015	✎	1	345	81	179	68	106

WITH EXTERNAL PRESSURE GAUGE							
Part Number	Availability	A	B	C	D	F1	F2
MX2-1/2-000026	✎	3/8	289	74.5	140	70	104.5
MX2-3/8-000026	✎	1/2	289	74.5	140	70	104.5
MX2-3/4-000026	✎	3/4	289	74.5	140	70	104.5
MX3-3/4-000026	✎	3/4	345	81	179	68	106
MX3-1-000026	✎	1	345	81	179	68	106

Composition of the assembled group 000016 and 000027

- Components:
- Lockable isolation 3/2 valve
- Filter-regulator
- Lubricator
- Pressure Gauge
- Bracket



- ✓ Ex Stock
- ✎ UK Assembly
- ⓞ Please Call Sales Office

WITH BUILT IN PRESSURE GAUGE							
Part Number	Availability	A	B	C	D	F1	F2
MX2-3/8-000016	✎	3/8	289	74.5	210	70	104.5
MX2-1/2-000016	✎	1/2	289	74.5	210	70	104.5
MX2-3/4-000016	✎	3/4	289	74.5	210	70	104.5
MX3-3/4-000016	✎	3/4	345	81	268.5	68	106
MX3-1-000016	✎	1	345	81	268.5	68	106

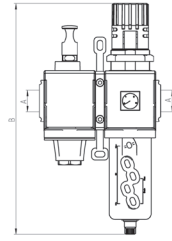
WITH EXTERNAL PRESSURE GAUGE							
Part Number	Availability	A	B	C	D	F1	F2
MX2-3/8-000027	✎	3/8	289	74.5	210	70	104.5
MX2-1/2-000027	✎	1/2	289	74.5	210	70	104.5
MX2-3/4-000027	✎	3/4	289	74.5	210	70	104.5
MX3-3/4-000027	✎	3/4	345	81	268.5	68	106
MX3-1-000027	✎	1	345	81	268.5	68	106

Please see page 206 for Series MX Accessories

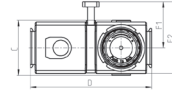
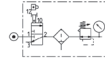
See full catalogue or books.camozzi.com for all dimensions.
For technical advice contact our sales office or your local Camozzi distributor.

Composition of the assembled group 000017 and 000028

- Components:
 Lockable isolation 3/2 valve
 Filter-regulator
 Pressure Gauge
 Bracket



- ✓ Ex Stock
- 🔧 UK Assembly
- 📞 Please Call Sales Office

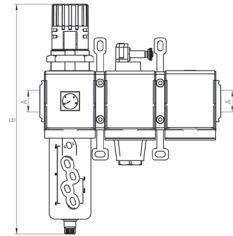


WITH BUILT IN PRESSURE GAUGE							
Part Number	Availability	A	B	C	D	F1	F2
MX2-3/8-000017	🔧	3/8	289	74.5	140	70	104.5
MX2-1/2-000017	🔧	1/2	289	74.5	140	70	104.5
MX2-3/4-000017	🔧	3/4	289	74.5	140	70	104.5
MX3-3/4-000017	🔧	3/4	345	81	179	68	106
MX3-1-000017	🔧	1	345	81	179	68	106

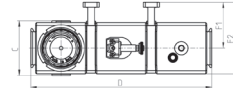
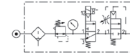
WITH EXTERNAL PRESSURE GAUGE							
Part Number	Availability	A	B	C	D	F1	F2
MX2-3/8-000028	🔧	3/8	289	74.5	140	70	104.5
MX2-1/2-000028	🔧	1/2	289	74.5	140	70	104.5
MX2-3/4-000028	🔧	3/4	289	74.5	140	70	104.5
MX3-3/4-000028	🔧	3/4	345	81	179	68	106
MX3-1-000028	🔧	1	345	81	179	68	106

Composition of the assembled group 000018 and 000029

- Components:
 Filter-regulator
 Lockable isolation 3/2 valve
 Soft start valve
 Pressure Gauge
 Bracket



- ✓ Ex Stock
- 🔧 UK Assembly
- 📞 Please Call Sales Office

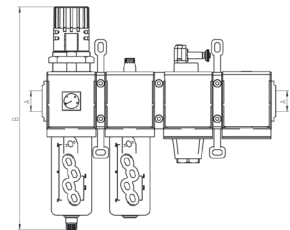
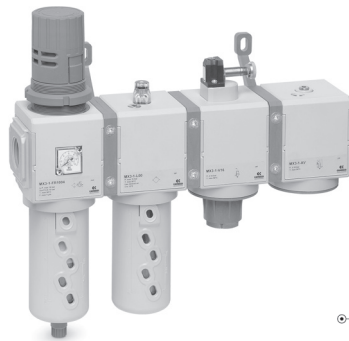


WITH BUILT IN PRESSURE GAUGE							
Part Number	Availability	A	B	C	D	F1	F2
MX2-3/8-000018	🔧	3/8	289	74.5	210	70	104.5
MX2-1/2-000018	🔧	1/2	289	74.5	210	70	104.5
MX2-3/4-000018	🔧	3/4	289	74.5	210	70	104.5
MX3-3/4-000018	🔧	3/4	345	81	268.5	68	106
MX3-1-000018	🔧	1	345	81	268.5	68	106

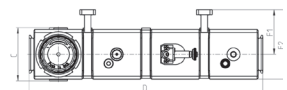
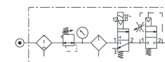
WITH EXTERNAL PRESSURE GAUGE							
Part Number	Availability	A	B	C	D	F1	F2
MX2-3/8-000029	🔧	3/8	289	74.5	210	70	104.5
MX2-1/2-000029	🔧	1/2	289	74.5	210	70	104.5
MX2-3/4-000029	🔧	3/4	289	74.5	210	70	104.5
MX3-3/4-000029	🔧	3/4	345	81	268.5	68	106
MX3-1-000029	🔧	1	345	81	268.5	68	106

Composition of the assembled group 000019 and 000030

- Components:
 Filter-regulator
 Lubricator
 Lockable isolation 3/2 valve
 Soft start valve
 Pressure Gauge
 Bracket



- ✓ Ex Stock
- 🔧 UK Assembly
- 📞 Please Call Sales Office



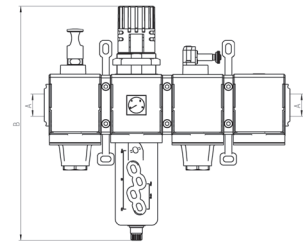
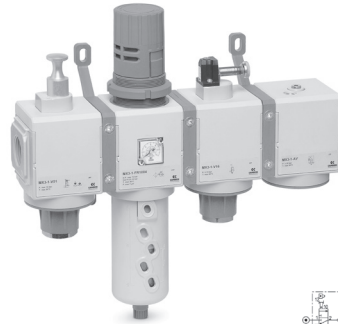
WITH BUILT IN PRESSURE GAUGE							
Part Number	Availability	A	B	C	D	F1	F2
MX2-3/8-000019	🔧	3/8	289	74.5	280	70	104.5
MX2-1/2-000019	🔧	1/2	289	74.5	280	70	104.5
MX2-3/4-000019	🔧	3/4	289	74.5	280	70	104.5
MX3-3/4-000019	🔧	3/4	345	81	358	68	106
MX3-1-000019	🔧	1	345	81	358	68	106

WITH EXTERNAL PRESSURE GAUGE							
Part Number	Availability	A	B	C	D	F1	F2
MX2-3/8-000030	🔧	3/8	289	74.5	280	70	104.5
MX2-1/2-000030	🔧	1/2	289	74.5	280	70	104.5
MX2-3/4-000030	🔧	3/4	289	74.5	280	70	104.5
MX3-3/4-000030	🔧	3/4	345	81	358	68	106
MX3-1-000030	🔧	1	345	81	358	68	106

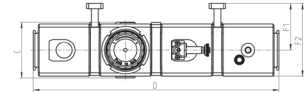
Please see page 206 for Series MX Accessories

Composition of the assembled group 000020 and 000031

- Components:
- Lockable isolation 3/2 valve
- Filter-regulator
- Lockable isolation 3/2 valve
- Soft start valve
- Pressure Gauge
- Bracket



- ✓ Ex Stock
- 🔧 UK Assembly
- 📞 Please Call Sales Office

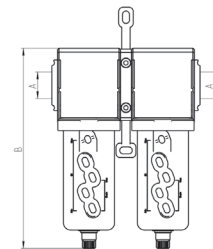


WITH BUILT IN PRESSURE GAUGE							
Part Number	Availability	A	B	C	D	F1	F2
MX2-3/8-000020	🔧	3/8	289	74.5	280	70	104.5
MX2-1/2-000020	🔧	1/2	289	74.5	280	70	104.5
MX2-3/4-000020	🔧	3/4	289	74.5	280	70	104.5
MX3-3/4-000020	🔧	3/4	345	81	358	68	106
MX3-1-000020	🔧	1	345	81	358	68	106

WITH EXTERNAL PRESSURE GAUGE							
Part Number	Availability	A	B	C	D	F1	F2
MX2-3/8-000031	🔧	3/8	289	74.5	280	70	104.5
MX2-1/2-000031	🔧	1/2	289	74.5	280	70	104.5
MX2-3/4-000031	🔧	3/4	289	74.5	280	70	104.5
MX3-3/4-000031	🔧	3/4	345	81	358	68	106
MX3-1-000031	🔧	1	345	81	358	68	106

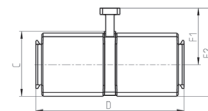
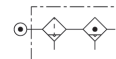
Composition of the assembled group 000036

- Components:
- Filter
- Coalescing filter
- Bracket



- ✓ Ex Stock
- 🔧 UK Assembly
- 📞 Please Call Sales Office

FILTER SET							
Part Number	Availability	A	B	C	D	F1	F2
MX2-3/8-000036	🔧	3/8	210	72	140	70	104.5
MX2-1/2-000036	🔧	1/2	210	72	140	70	104.5
MX2-3/4-000036	🔧	3/4	210	72	140	70	104.5
MX3-3/4-000036	🔧	3/4	231	78	179	68	106
MX3-1-000036	🔧	1	231	78	179	68	106



Please see page 206 for Series MX Accessories

Series MX Accessories for FRL

- ✓ Ex Stock
- 🔧 UK Assembly
- 📞 Please Call Sales Office

Rapid Clamp Kit for Series MX - Size 2

Kit MX2-X supplied with: 1 rapid clamp, 1 O-ring OR 3125**, 2 hexagonal nuts M5, 2 screws M5x69.

Kit MX2-Z supplied with: 1 rapid clamp, 1 O-ring OR 3125**, 1 hexagonal nut M5, 1 screw M5x69, 1 screw M5x85 for wall fixing.

** it can be ordered separately (cod. 160-39-11/19)

Materials: technopolymer clamp, NBR O-ring, zinc-plated stainless steel nuts and screws.

Part Number	Availability
MX2-X	✓
MX2-Z*	✓

*kit with wall fixing screw



Rapid Clamp Kit for Series MX - Size 3

Kit MX3-X supplied with: 1 rapid clamp, 1 O-ring OR 3150 **, 2 square nuts M6, 2 screws M6x75.

Kit MX3-Z supplied with: 1 rapid clamp, 1 O-ring OR 3150 **, 1 square nut M6, 1 screw M6x75, 1 screw M6x90 for wall fixing.

** it can be ordered separately (cod. C401-F33)

Materials: technopolymer clamp, NBR O-ring, zinc-plated stainless steel nuts and screws.

Part Number	Availability
MX3-X	✓
MX3-Z	✓



Rapid Clamp Kit with wall fixing brackets for Series MX - Size 2

The kit MX2-Y is supplied with:
1 wall rapid clamp, 1 O-ring OR 3125 **, 2 hexagonal nuts, 2 screws M5x69.

** it can be separately ordered (cod. 160-39-11/19)

Materials: technopolymer clamp, NBR O-ring, zinc-plated stainless steel nuts and screws.



Part Number	Availability
MX2-Y	✓

Rapid Clamp Kit with wall fixing brackets for Series MX - Size 3

The kit MX3-Y is supplied with:
1 wall rapid clamp, 1 O-ring OR 3150 **, 2 square nuts M6, 2 screws M6x75

** it can be also separately ordered (cod. C401-F33)

Materials: technopolymer clamp, NBR O-ring, zinc-plated stainless steel nuts and screws.

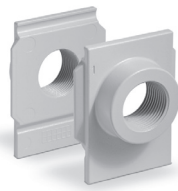


Part Number	Availability
MX3-Y	✓

Terminal Flanges (IN/OUT) for Series MX

The kit is supplied with:
- 1 flange INLET side
- 1 flange OUTLET side

Materials: painted aluminium flanges.



Part Number	Availability
MX2-3/8-FL	✓
MX2-1/2-FL	✓
MX2-3/4-FL	✓
MX3-3/4-FL	✓
MX3-1-FL	✓

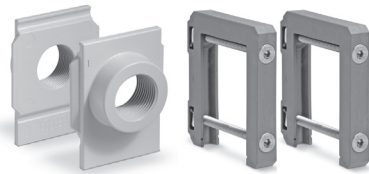
Fixing bracket for regulators Series MX

The kit is supplied with 1 zinc-plated stainless steel bracket



Part Number	Availability
MX2-S	✓
MX3-S	✓

Rapid clamps kit + flanges for Series MX

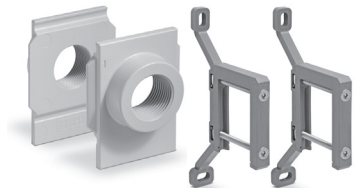


Part Number	Availability
MX2-3/8-HH	✓
MX2-1/2-HH	✓
MX2-3/4-HH	✓
MX2-3/8-JJ*	✓
MX2-1/2-JJ*	✓
MX2-3/4-JJ*	✓

Part Number	Availability
MX3-3/4-HH	✓
MX3-1-HH	✓
MX3-3/4-JJ*	✓
MX3-1-JJ*	✓

*kit with wall fixing screw

Rapid clamps kit with wall fixing brackets + flanges for Series MX



Part Number	Availability
MX2-3/8-KK	✓
MX2-1/2-KK	✓
MX2-3/4-KK	✓

Part Number	Availability
MX3-3/4-KK	✓
MX3-1-KK	✓

Block for Pressure Gauge Fixing

The kit is supplied with:
- 1 block
- 1 grain
- 2 screws
- 1 seal

New



Part Number	Availability
MX2-R26/1-P	✓
MX3-R26/1-P	✓

MX Built-in Pressure Gauge

The kit is supplied with:
- 1 pressure gauge
- 1 seal
- 2 screws

New



Part Number	Availability	Range
MX3-R30/W-P	✓	0 - 2.5 bar
MX3-R31/W-P	✓	0 - 6 bar
MX3-R32/W-P	✓	0 - 10 bar
MX3-R33/W-P	✓	0 - 12 bar