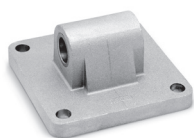


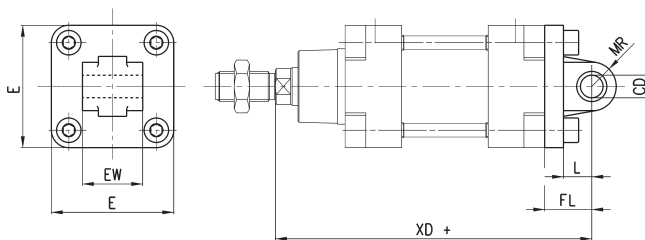
Rear male trunnion Mod. L



Supplied with:
1x male trunnion in Aluminium *
4x screws

* For \varnothing 320 black-painted steel (cataphoresis)

+ = add the stroke



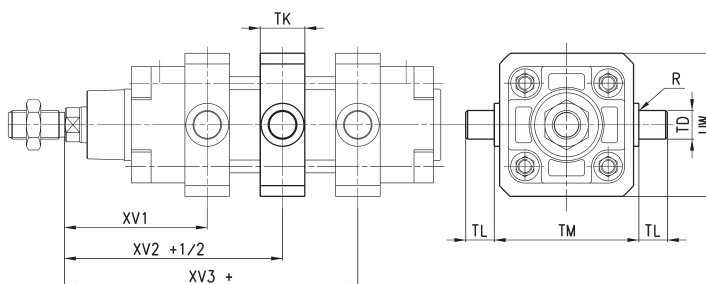
DIMENSIONS								
Mod.	\varnothing	\varnothing CD	L	FL	XD+	MR	E	EW
L-41-160	160	30	35	55	315	30	175	90
L-41-200	200	30	35	60	335	30	215	90
L-41-250	250	40	45	70	375	40	270	110
L-41-320	320	45	50	80	420	45	350	110

Centre trunnion Mod. F



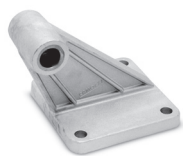
Material:
- zinc-plated steel (\varnothing 160 and 200)
- painted cast iron (\varnothing 250 and 320)

+ = add the stroke



DIMENSIONS											
Mod.	\varnothing	XV1	XV + 1/2	XV3 +	TM	TK	\varnothing TD	TL	UW	R	NOTE
F-160	160	145	170	195	200	40	32	32	190	2	
F-200	200	160	185	210	250	40	32	32	240	2	
F-250	250	185	205	225	320	50	40	40	296	-	mounting with 4 threaded tie-rods
F-320	320	210,5	230	249,5	400	70	50	50	400	-	mounting with 4 threaded tie-rods

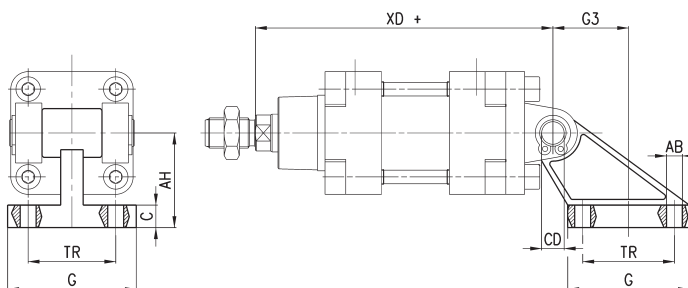
90° Swivel combination Mod. ZS*



* not according to standard

Supplied with:
1x 45° swivel combination in Aluminium

+ = add the stroke



DIMENSIONS									
Mod.	\varnothing	TR	\varnothing AB	AH	C	G	\varnothing CD	XD +	G3
ZS-160	160	140	18	140	20	180	30	315	105
ZS-200	200	175	18	140	25	220	30	335	125