

Pneumatically Operated Globe Valves

Connections: 1/2, 3/4, 1, 1 1/4, 1 1/2, 2

Globe valves type B are simple on-off seat valves with pneumatic actuation. They are available in sizes G1/2 to 2 and in single acting normally closed and double acting versions.

The seat configuration is such that the valve opens in the direction of flow and closes against it.

At line pressures in excess of 3.5 bar, or in the case of actuator failure, the valve will tend to open.

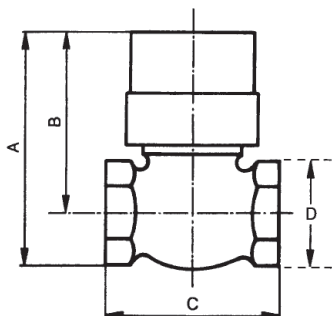
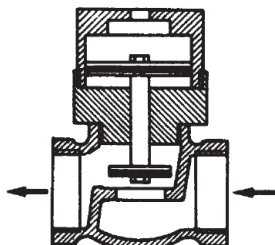
(For higher line pressure, please contact our sales offices).

Part Number: B (+size) DE (double acting)

B (+size) NC (single acting)



Flowpath



Dimensions (mm)							
Size	DN	D	Kv	A	B	C	Weight gr.
1/2	15	17	3.4	105	85	60	600
3/4	20	22	7.9	113	85	75	700
1	25	28	11	125	95	85	1300
1 1/4	32	37	18	136	103	95	1700
1 1/2	40	43	28	170	130	110	2450
2	50	55	44	180	135	120	2900

Technical Data

Media

Simple on-off seat valve with pneumatic actuation

Operating Pressure

Please contact our technical office

Operating Temperature

-20°C to +100°C

Flow Rates

Flow rates stated in Kv: Flow coefficient in m³/h at differential pressure of 100kPa

Threads

ISO 228 f/f

Materials

Body: Bronze

Stem: Stainless steel AISI 303

Seal: NBR, PTFE or Viton on request

Actuation Details

All types, 3 to 8 bar, air only

Additional Options

NPTF Valve threads. Position limit switches available

Special Requests

For assistance, contact our technical office or your local Camozzi distributor.