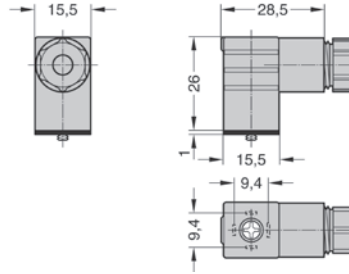
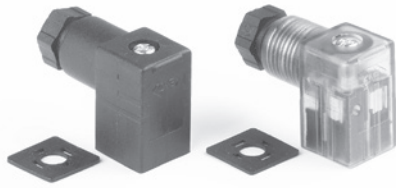


### Industrial Form C (9.4mm pin spacing)



- ✓ Ex Stock
- ✎ UK Assembly
- ⊗ Please Call Sales Office

Industrial Form C (9.4mm pin spacing)		Type	Cable
Part Number	Availability	(LED Voltage AC/DC)	Entry
<b>KD136000B7</b>	✓	<b>Black Connector</b>	<b>PG7</b>
<b>KD136V54T7</b>	✓	<b>Transparent (24V LED)</b>	<b>PG7</b>
<b>KD136V55T7</b>	✓	<b>Transparent (115V LED)</b>	<b>PG7</b>
<b>KD136V56T7</b>	✓	<b>Transparent (230V LED)</b>	<b>PG7</b>

Use with Camozzi Series E and P valves

#### Technical Data

##### Type

Connector with cable gland entry: standard, mini and micro

Operating Temperature  
-40°C to +90°C

##### Materials

Connectors: Polyamide (glass fibre reinforced)  
Profile gasket: NBR standard (Form A and B)  
Flat gasket: NBR standard (Form C)  
Screw: Form A and B - M3 x 32.5mm  
Industrial Form C - M3 x 27.5mm  
Form C - M2.5 x 27.5mm

##### Insulation Group

VDE 0110 1/89 - Class C

##### Voltage

Up to 250V AC or DC unless otherwise stated

Other voltages available on request

##### Current

10A (nominal) 16A (max) - Form A and B

6A (nominal) 10A (max) - Form C

##### Contact Resistance

≤ 4mΩ

##### Protection Rating

IP65 (when correctly assembled with fixing screw and gasket supplied)

##### Cable Gland Size

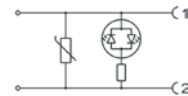
PG7 cable diameter 4 - 6mm

PG9 cable diameter 6 - 8mm

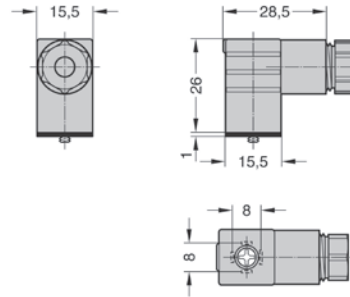
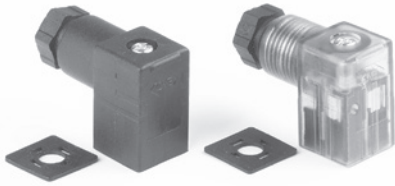
##### LED Circuit Function

Where an LED is required, the standard control circuit contains an amber bipolar LED to confirm supply voltage, and VDR (varistor) which protects the supply and load from over voltage.

The circuit can be used for AC or DC supply at the stated voltage



### Form C (8mm pin spacing)

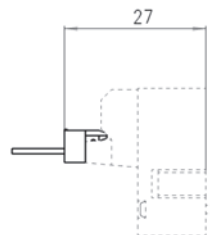
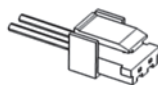


- ✓ Ex Stock
- ✎ UK Assembly
- ⊗ Please Call Sales Office

Form C (8mm pin spacing)		Type	Cable
Part Number	Availability	(LED Voltage AC/DC)	Entry
<b>KC136000B7</b>	✓	<b>Black Connector</b>	<b>PG7</b>
<b>KC136V54T7</b>	✓	<b>Transparent (24V LED)</b>	<b>PG7</b>
<b>KC136V55T7</b>	⊗	<b>Transparent (115V LED)</b>	<b>PG7</b>
<b>KC136V56T7</b>	⊗	<b>Transparent (230V LED)</b>	<b>PG7</b>

Use with Camozzi Series W valves

### Solenoid Connectors



- ✓ Ex Stock
- ✎ UK Assembly
- ⊗ Please Call Sales Office

Part Number	Availability	
<b>121-803</b>	✓	<b>with 300 mm cable</b>
<b>121-806</b>	✓	<b>with 600 mm cable</b>
<b>121-810</b>	✓	<b>with 1000 mm cable</b>

Use with Camozzi Series K and Series E (size 10.5mm) valves

#### Options

LED in red or green

Additional control circuit functions available.

Gaskets in profile or flat Form.

For solenoid connectors with moulded cable, see pages 136-137

For proximity switches, see page 45

#### Special Requests

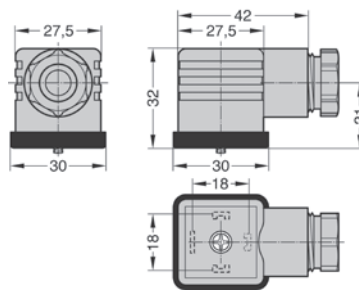
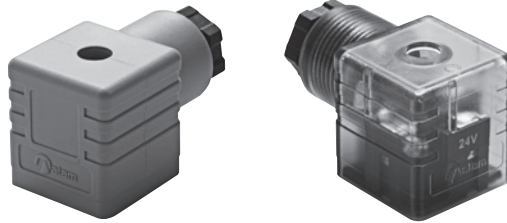
For assistance, contact our technical office or your local Camozzi distributor.

# Solenoid DIN Connectors

With cable gland entry and conforming to EN175301-803 (Formerly DIN43650)  
The Camozzi range of DIN connectors with cable gland entry offers flexibility and are suitable for a wide variety of applications.

## Form A (18mm pin spacing)

Also available with flat gasket.



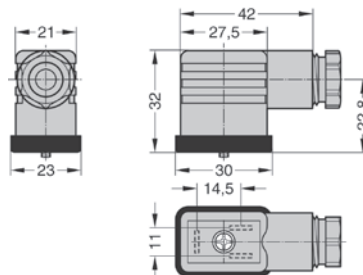
- ✓ Ex Stock
- ✎ UK Assembly
- ☎ Please Call Sales Office

Form A (18mm pin spacing)		Type	Cable
Part Number	Availability	(LED Voltage AC/DC)	Entry
KA132000B9	✓	Black Connector	PG9
KA132000A9	✓	Grey Connector	PG9
KA042000B9	✓	Black Connector (3+E)	PG9
KA042000A9	✓	Grey Connector (3+E)	PG9
KA132T54T9	✓	Transparent (24V LED)	PG9
KA132V55T9	✓	Transparent (115V LED)	PG9
KA132V56T9	✓	Transparent (230V LED)	PG9

Use with Camozzi Series 4 valves - 1/2, Series 6 and A80 coils

## Industrial Form B (11mm pin spacing)

Also available with flat gasket.



- ✓ Ex Stock
- ✎ UK Assembly
- ☎ Please Call Sales Office

Industrial Form B (11mm pin spacing)		Type	Cable
Part Number	Availability	(LED Voltage AC/DC)	Entry
KB132000B9	✓	Black Connector	PG9
KB132V54T9	✓	Transparent (24V LED)	PG9
KB132V55T9	✓	Transparent (115V LED)	PG9
KB132V56T9	✓	Transparent (230V LED)	PG9

Use with Camozzi Series A, Series AP, Series 3, Series 4 ISO valves and NAMUR valves

### Technical Data

**Type**  
Connector with cable gland entry: standard, mini and micro  
**Operating Temperature**  
-40°C to +90°C.

### Materials

Connectors: Polyamide (glass fibre reinforced)  
Profile gasket: NBR standard (Form A and B)  
Flat gasket: NBR standard (Form C)  
Screw: Form A and B - M3 x 32mm  
Industrial Form C - M3 x 28mm  
Form C - M2.5 x 28mm

### Insulation Group

VDE 0110 1/89 - Class C

### Voltage

Up to 250V AC or DC unless otherwise stated

Other voltages available on request

### Current

10A (nominal) 16A (max) - Form A and B

6A (nominal) 10A (max) - Form C

### Contact Resistance

≤4m Ω

### Protection Rating

IP65 (when correctly assembled with fixing screw and gasket supplied)

### Cable Gland Size

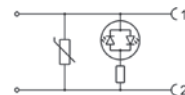
PG7 cable diameter 4 - 6mm

PG9 cable diameter 6 - 8mm

### LED Circuit Function

Where an LED is required, the standard control circuit contains an amber bipolar LED to confirm supply voltage, and VDR (varistor) which protects the supply and load from over voltage.

The circuit can be used for AC or DC supply at the stated voltage



### Options

LED in red or green

Additional control circuit functions available.

Gaskets in profile or flat Form.

For solenoid connectors with moulded cable, see pages 136-137  
For proximity switches, see page 45

### Special Requests

For assistance, contact our technical office or your local Camozzi distributor.