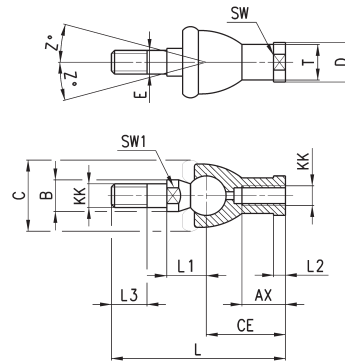


### Piston rod socket joint Mod. GY



ISO 8139  
Material: zama and zinc-plated steel.

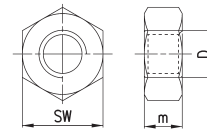


DIMENSIONS																	
Mod.	∅	Z	E	SW	$\varnothing T$	$\varnothing D$	$\varnothing C$	$\varnothing B$	KK	L3	SW1	L1	L	CE	AX	L2	
GY-12-16	12-16	15	6	11	10	13	20	10	M6X1	11	8	12,2	55	28	15	5	
GY-20	20	15	8	14	12,5	16	24	12	M8X1,25	12	10	16	65	32	16	5	
GY-32	25	15	10	17	15	19	28	14	M10X1,25	15	11	19,5	74	35	18	6,5	

### Piston rod lock nut Mod. U



ISO 4035  
Material: zinc-plated steel.

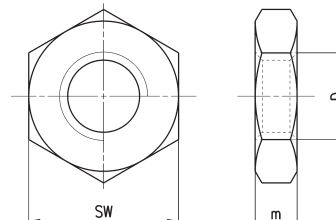


DIMENSIONS				
Mod.	∅	SW	m	D
U-8-10	8-10	7	3	M4X0,7
U-12-16	12-16	10	4	M6X1
U-20	20	13	5	M8X1,25
U-25-32	25	17	6	M10X1,25

### Nose nut Mod.V



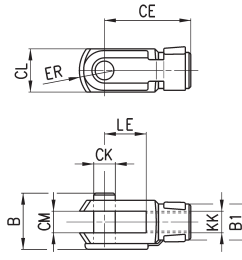
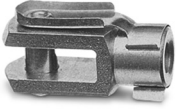
ISO 4035  
V-8-10 / V-20-25 not according standard.  
Material: zinc-plated steel



DIMENSIONS				
Mod.	∅	D	m	SW
V-8-10	8-10	M12X1,25	7	19
V-12-16	12-16	M16X1,5	8	24
V-20-25	20-25	M22X1,5	10	32

### Rod fork end Mod. G

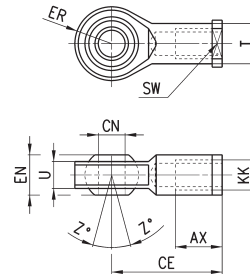
ISO 8140  
Material: zinc-plated steel



DIMENSIONS										
	CK	LE	CM	CL	ER	CE	KK	B	B1	
G-25-32	10	20	10	20	12	40	M10X1,25	26	18	
G-40	12	24	12	24	14	48	M12X1,25	32	20	
G-50-63	16	32	16	32	19	64	M16X1,5	40	26	
G-80-100	20	40	20	40	25	80	M20X1,5	48	34	
G-41-125	30	54	30	55	38	110	M27X2	74	48	

### Swivel ball joint Mod. GA

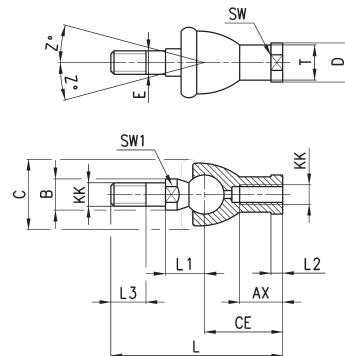
ISO 8139.  
Material: zinc-plated steel.



DIMENSIONS												
Mod.	∅	∅ <sub>1</sub> CN <sup>(17)</sup>	U	EN	ER	AX	CE	KK	∅ <sub>2</sub> T	Z	SW	
GA-32	32	10	10,5	14	14	20	43	M10X1,25	15	6,5	17	
GA-40	40	12	12	16	16	22	50	M12X1,25	17,5	6,5	19	
GA-50-63	50-63	16	15	21	21	28	64	M16X1,5	22	7,5	22	
GA-80-100	80-100	20	18	25	25	33	77	M20x1,5	27,5	7	30	
GA-41-125	125	30	25	37	35	51	110	M27x2	40	7,5	41	

### Piston rod socket joint Mod. GY

Material: zama and zinc-plated steel.

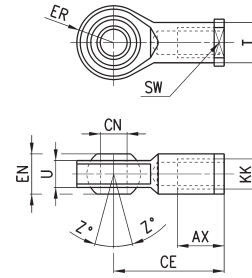


DIMENSIONS																
Mod.	∅	KK	L	CE	L2	AX	SW	SW1	L1	L3	∅ <sub>1</sub> T	∅ <sub>2</sub> D	E	∅ <sub>3</sub> B	∅ <sub>4</sub> C	Z
GY-32	32	M10X1,25	74	35	6,5	18	17	11	19,5	15	15	19	10	14	28	15
GY-40	40	M12X1,25	84	40	6,5	20	19	17	21	17	17,5	22	12	19	32	15
GY-50-63	50-63	M16X1,5	112	50	8	27	22	19	27,5	23	22	27	16	22	40	11
GY-80-100	80-100	M20x1,5	133	63	10	38	30	24	31,5	25	27,5	34	20	27	45	7,5

### Swivel ball joint Mod. GA



ISO 8139.  
Material: zinc-plated steel.

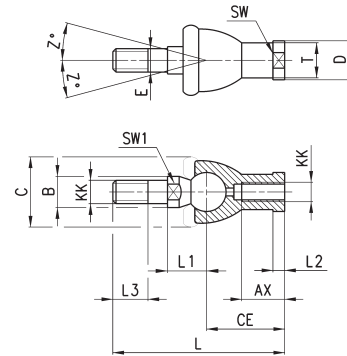


Mod.	$\varnothing_{CN}^{(H7)}$	U	EN	ER	AX	CE	KK	$\varnothing_T$	Z	SW
GA-32	10	10,5	14	14	20	43	M10X1,25	15	6,5	17
GA-40	12	12	16	16	22	50	M12X1,25	17,5	6,5	19
GA-50-63	16	15	21	21	28	64	M16X1,5	22	7,5	22
GA-80-100	20	18	25	25	33	77	M20x1,5	27,5	7	30
GA-41-125	30	25	37	37	51	110	M27x2	40	7,5	41

### Piston rod socket joint Mod. GY

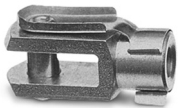


Material: zama and zinc-plated steel.

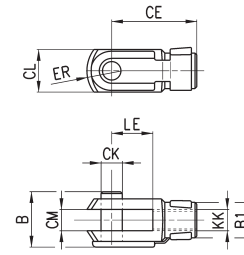


DIMENSIONS																
Mod.	$\varnothing$	KK	L	CE	L2	AX	SW	SW1	L1	L3	$\varnothing_T$	$\varnothing_D$	E	$\varnothing_B$	$\varnothing_C$	Z
GY-32	32	M10X1,25	74	35	6,5	18	17	11	19,5	15	15	19	10	14	28	15
GY-40	40	M12X1,25	84	40	6,5	20	19	17	21	17	17,5	22	12	19	32	15
GY-50-63	50-63	M16X1,5	112	50	8	27	22	19	27,5	23	22	27	16	22	40	11
GY-80-100	80-100	M20x1,5	133	63	10	38	30	24	31,5	25	27,5	34	20	27	45	7,5

### Rod fork end Mod. G



ISO 8140  
Material: zinc-plated steel

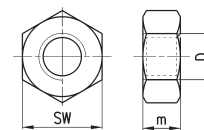


Mod.	$\varnothing_{CK}$	LE	CM	CL	ER	CE	KK	B	$\varnothing_{B1}$
G-25-32	10	20	10	20	12	40	M10 X 1,25	26	18
G-40	12	24	12	24	14	48	M12 X 1,25	32	20
G-50-63	16	32	16	32	19	64	M16 X 1,5	40	26
G-80-100	20	40	20	40	25	80	M20 X 1,5	48	34
G-41-125	30	54	30	55	38	110	M27 X 2	74	48

### Piston rod lock nut Mod. U



ISO 4035  
Material: zinc-plated steel.

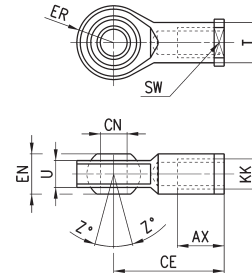


Mod.	D	m	SW
U-25-32	M10X1,25	6	17
U-40	M12X1,25	7	19
U-50-63	M16X1,5	8	24
U-80-100	M20x1,5	9	30
U-41-125	M27x2	12	41

### Swivel ball joint Mod. GA



Material: zinc-plated steel  
ISO 8139

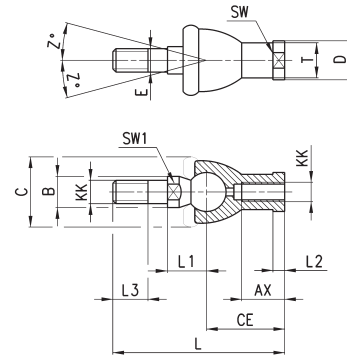


DIMENSIONS										
Mod.	$\varnothing$ CN	U	EN	ER	AX	CE	KK	T	Z	SW
GA-32	10	10,5	14	14	20	43	M10X1,25	15	6,5	17
GA-40	12	12	16	16	22	50	M12X1,25	17,5	6,5	19
GA-50-63	16	15	21	21	28	64	M16X1,5	22	7,5	22
GA-80-100	20	18	25	25	33	77	M20x1,5	27,5	7	30

### Piston rod socket joint Mod. GY

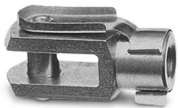


Material: zama and zinc-plated steel

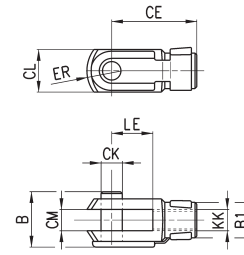


DIMENSIONS																
Mod.	$\varnothing$	KK	L	CE	L2	AX	SW	SW1	L1	L3	$\varnothing$ T	$\varnothing$ D	E	$\varnothing$ B	$\varnothing$ C	Z
GY-32	32	M10X1,25	74	35	6,5	18	17	11	19,5	15	15	19	10	14	28	15
GY-40	40	M12X1,25	84	40	6,5	20	19	17	21	17	17,5	22	12	19	32	15
GY-50-63	50-63	M16X1,5	112	50	8	27	22	19	27,5	23	22	27	16	22	40	11
GY-80-100	80-100	M20x1,5	133	63	10	38	30	24	31,5	25	27,5	34	20	27	45	7,5

### Rod fork end Mod. G



Material: zinc-plated steel  
ISO 8140

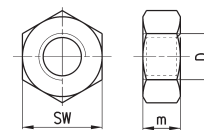


DIMENSIONS									
Mod.	$\varnothing$ CK	LE	CM	CL	ER	CE	KK	B	B1
G-25-32	10	20	10	20	12	40	M10 X 1,25	26	18
G-40	12	24	12	24	14	48	M12 X 1,25	32	20
G-50-63	16	32	16	32	19	64	M16 X 1,5	40	26
G-80-100	20	40	20	40	25	80	M20 X 1,5	48	34

### Piston rod lock nut Mod. U



Material: zinc-plated steel  
ISO 4035

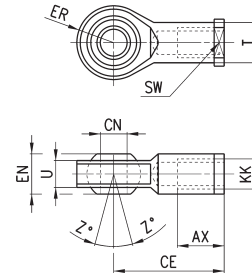


DIMENSIONS			
Mod.	D	m	SW
U-25-32	M10X1,25	6	17
U-40	M12X1,25	7	19
U-50-63	M16X1,5	8	24
U-80-100	M20x1,5	9	30

### Swivel ball joint Mod. GA



ISO 8139.  
Material: zinc-plated steel.

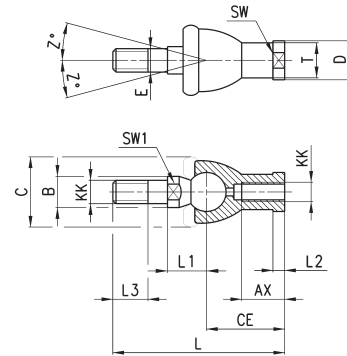


Mod.	$\varnothing$ CN <sup>(M7)</sup>	U	EN	ER	AX	CE	KK	$\varnothing$ T	Z	SW
GA-50-63	16	15	21	21	28	64	M16X1,5	22	7,5	22
GA-80-100	20	18	25	25	33	77	M20x1,5	27,5	7	30
GA-41-125	30	25	37	37	51	110	M27x2	40	7,5	41

### Piston rod socket joint Mod. GY

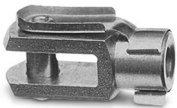


Material: zama and zinc-plated steel.

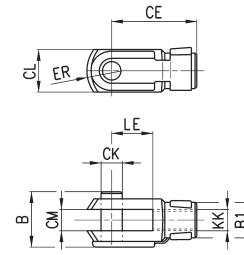


DIMENSIONS																
Mod.	$\varnothing$	KK	L	CE	L2	AX	SW	SW1	L1	L3	$\varnothing$ T	$\varnothing$ D	E	$\varnothing$ B	$\varnothing$ C	Z
GY-50-63	50-63	M16X1,5	112	50	8	27	22	19	27,5	23	22	27	16	22	40	11
GY-80-100	80-100	M20x1,5	133	63	10	38	30	24	31,5	25	27,5	34	20	27	45	7,5

### Rod fork end Mod. G



ISO 8140  
Material: zinc-plated steel

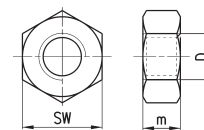


Mod.	$\varnothing$ CK	LE	CM	CL	ER	CE	KK	B	$\varnothing$ B1
G-50-63	16	32	16	32	19	64	M16 X 1,5	40	26
G-80-100	20	40	20	40	25	80	M20 X 1,5	48	34
G-41-125	30	54	30	55	38	110	M27 X 2	74	48

### Piston rod lock nut Mod. U



ISO 4035  
Material: zinc-plated steel.

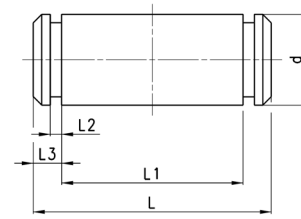


Mod.	D	m	SW
U-50-63	M16X1,5	8	24
U-80-100	M20x1,5	9	30
U-41-125	M27x2	12	41

### Clevis pin Mod. S



Supplied with:  
1x centering pin in stainless steel 303  
2x seeger in steel

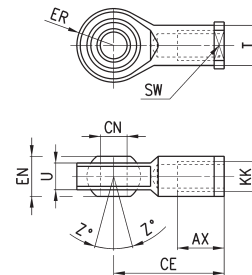


DIMENSIONS						
Mod.	∅	d	L	L1	L2	L3
S-32	32	10	52	46	1.1	3
S-40	40	12	59	53	1.1	3
S-50	50	12	67	61	1.1	3
S-63	63	16	77	71	1.1	3
S-80	80	16	97	91	1.1	3
S-100	100	20	121	111	1.3	5
S-125	125	25	140.5	132	1.3	4.25

### Swivel ball joint Mod. GA



ISO 8139.  
Material: zinc-plated steel.

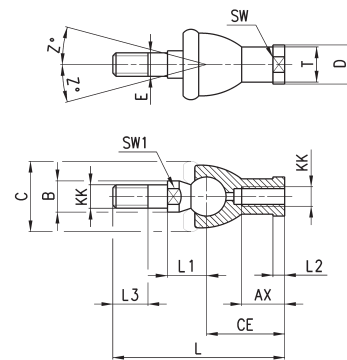


Mod.	∅ <sup>(17)</sup>	U	EN	ER	AX	CE	KK	∅ <sup>T</sup>	Z	SW
GA-32	10	10,5	14	14	20	43	M10X1,25	15	6,5	17
GA-40	12	12	16	16	22	50	M12X1,25	17,5	6,5	19
GA-50-63	16	15	21	21	28	64	M16X1,5	22	7,5	22
GA-80-100	20	18	25	25	33	77	M20x1,5	27,5	7	30
GA-41-125	30	25	37	37	51	110	M27x2	40	7,5	41

### Piston rod socket joint Mod. GY

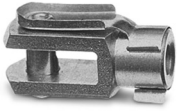


Material: zama and zinc-plated steel.

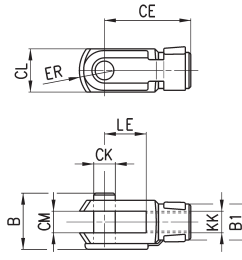


DIMENSIONS																
Mod.	∅	KK	L	CE	L2	AX	SW	SW1	L1	L3	∅ <sup>T</sup>	∅ <sup>D</sup>	E	∅ <sup>B</sup>	∅ <sup>C</sup>	Z
GY-32	32	M10X1,25	74	35	6,5	18	17	11	19,5	15	15	19	10	14	28	15
GY-40	40	M12X1,25	84	40	6,5	20	19	17	21	17	17,5	22	12	19	32	15
GY-50-63	50-63	M16X1,5	112	50	8	27	22	19	27,5	23	22	27	16	22	40	11
GY-80-100	80-100	M20x1,5	133	63	10	38	30	24	31,5	25	27,5	34	20	27	45	7,5

### Rod fork end Mod. G



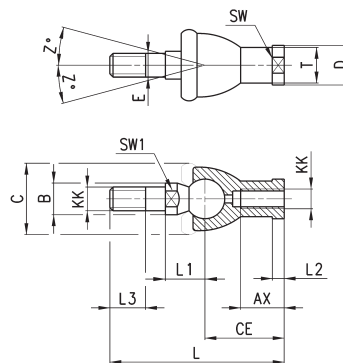
ISO 8140  
Material: zinc-plated steel.



DIMENSIONS										
Mod.	∅	∅ <sub>CK</sub>	LE	CM	CL	ER	CE	KK	B	∅ <sub>B1</sub>
G-20	20-25	8	16	8	16	10	32	M8X1,25	22	14
G-25-32	32-40	10	20	10	20	12	40	M10x1,25	26	18
G-40	50-63	12	24	12	24	14	48	M12x1,25	32	20
G-50-63	80-100	16	32	16	32	19	64	M16x1,5	40	26

### Piston rod socket joint Mod. GY

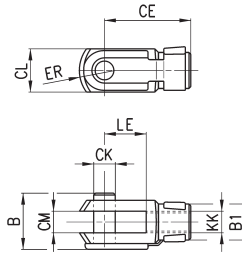
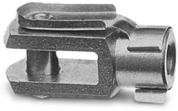
Material: zama and zinc-plated steel.



DIMENSIONS																	
Mod.	∅	KK	L	CE	L2	AX	SW	SW1	L1	L3	∅ <sub>T</sub>	∅ <sub>D</sub>	E	∅ <sub>B</sub>	∅ <sub>C</sub>	Z	
GY-20	20-25	M8X1,25	65	32	5	16	14	10	16	12	12,5	13	6	10	20	15	
GY-32	32-40	M10X1,25	74	35	6,5	18	17	11	19,5	15	15	19	10	14	28	15	
GY-40	50-63	M12X1,25	84	40	6,5	20	19	17	21	17	17,5	22	12	19	32	15	
GY-50-63	80-100	M16X1,5	112	50	8	27	22	19	27,5	23	22	27	16	22	40	11	

### Rod fork end Mod. G

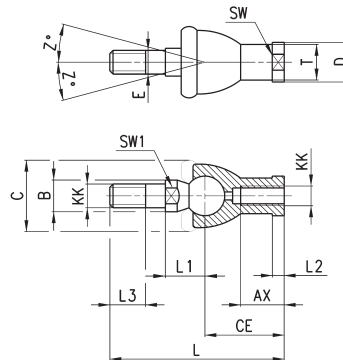
ISO 8140  
Material: zinc-plated steel



DIMENSIONS										
Mod.	∅	B	$\varnothing_{B1}$	$\varnothing_{CK}$	LE	CM	CL	ER	CE	KK
G-12-16	12	16	10	6	12	6	12	7	24	M6X1
G-20	16	22	14	8	16	8	16	42	32	M8X1,25
G-25-32	20 ÷ 40	26	18	10	20	10	20	12	40	M10X1,25
G-40	50 ÷ 63	32	20	12	24	12	24	14	48	M12X1,25
G-50-63	80	40	26	16	32	16	32	19	64	M16X1,5
G-80-100	100	48	34	20	40	20	40	25	80	M20X1,5

### Piston rod socket joint Mod. GY

Material: zama and zinc-plated steel



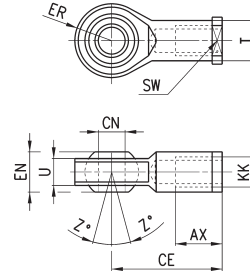
DIMENSIONS																
Mod.	∅	KK	L	CE	L2	AX	E	$\varnothing_B$	$\varnothing_C$	$\varnothing_T$	$\varnothing_D$	L1	L3	SW1	SW	Z
GY-12-16	12	M6X1	55	28	5	15	6	10	20	10	13	12,2	11	8	11	15
GY-20	16	M8X1,25	65	32	5	16	8	12	24	12,5	16	16	12	10	14	15
GY-32	20÷40	M10X1,25	74	35	6,5	18	10	14	28	15	19	19,5	15	11	17	15
GY-40	50÷63	M12X1,25	84	40	6,5	20	12	19	32	17,5	22	21	17	17	19	15
GY-50-63	80	M16X1,5	112	50	8	27	16	22	40	22	27	27,5	23	19	22	11
GY-80-100	100	M20X1,5	133	63	10	38	20	27	45	27,5	34	31,5	25	24	30	7,5



### Swivel ball joint Mod. GA



Material: zinc-plated steel  
ISO 8139

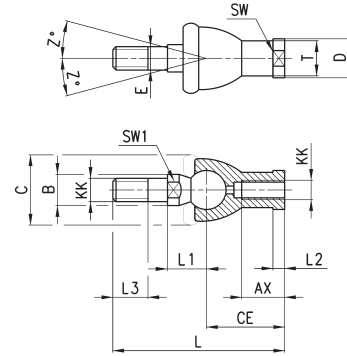


DIMENSIONS											
Mod.	∅	$\varnothing$ CN <sup>(H7)</sup>	U	EN	ER	AX	CE	KK	$\varnothing$ T	Z	SW
GA-20	20	8	9	12	12	16	36	M8x1,25	12,5	6,5	14
GA-32	25-32	10	10,5	14	14	20	43	M10x1,25	15	6,5	17
GA-40	40-50	12	12	16	16	22	50	M12x1,25	17,5	6,5	19
GA-50-63	63	16	15	21	21	28	64	M16x1,5	22	7,5	22

### Piston rod socket joint Mod. GY



Material: zama and zinc-plated steel

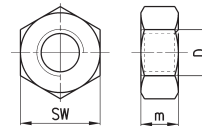


DIMENSIONS																
Mod.	∅	KK	L	CE	L2	AX	E	$\varnothing$ B	$\varnothing$ C	T	D	L1	L3	SW1	SW	Z
GY-20	20	M8x1,25	65	32	5	16	8	12	24	12,5	16	16	12	10	14	15
GY-32	25-32	M10x1,25	74	35	6,5	18	10	14	28	15	19	19,5	15	11	17	15
GY-40	40-50	M12x1,25	84	40	6,5	20	12	19	32	17,5	22	21	17	17	19	15
GY-50-63	63	M16x1,5	112	50	8	27	16	22	40	22	27	27,5	23	19	22	11

### Piston rod lock nut Mod. U



Material: zinc-plated steel  
ISO 4035

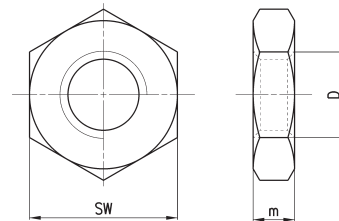


DIMENSIONS				
Mod.	∅	D	m	SW
U-20	20	M8x1,25	5	13
U-25-32	20-32	M10x1,25	6	17
U-40	40-50	M12x1,25	7	19
U-50-63	63	M16x1,5	8	24

### Nose nut Mod. V

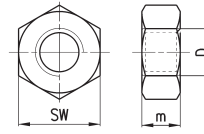


ISO 4035  
V-27-25 / V-42-32 not according standard.  
Material: zinc-plated steel



DIMENSIONS				
Mod.	∅	D	m	SW
V-12-16	20	M16x1,5	8	24
V-27-25	25	M18x1,5	5	24
V-20-25	32	M22x1,5	10	32
V-42-32	40	M30x1,5	8	-

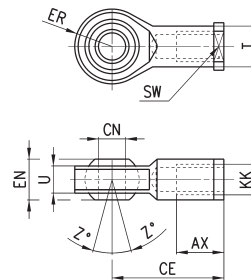
### Piston rod lock Mod. U



DIMENSIONS				
Mod.	∅	D	m	SW
U-25-32	32	M10X1,25	6	17
U-40	40	M12X1,25	7	19
U-50-63	50-63	M16X1,5	8	24

### Swivel ball joint Mod. GA

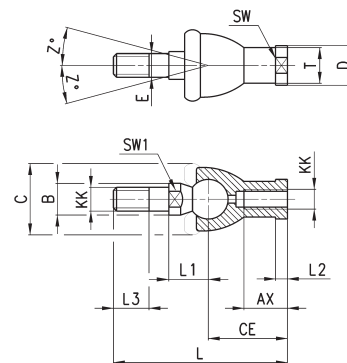
Material: zinc-plated steel  
ISO 8139



DIMENSIONS											
Mod.	∅	∅CN	U	EN	ER	AX	CE	KK	T	Z	SW
GA-32	32	10	10,5	14	14	20	43	M10X1,25	15	6,5	17
GA-40	40	12	12	16	16	22	50	M12X1,25	17,5	6,5	19
GA-50-63	50-63	16	15	21	21	28	64	M16X1,5	22	7,5	22

### Piston rod socket joint Mod. GY

Material: zama and zinc-plated steel



DIMENSIONS																
Mod.	∅	KK	L	CE	L2	AX	SW	SW1	L1	L3	∅T	∅D	E	∅B	∅C	Z
GY-32	32	M10x1,25	74	35	6,5	18	17	11	19,5	15	15	19	10	14	28	15
GY-40	40	M12x1,25	84	40	6,5	20	19	17	22	17	17,5	22	12	19	32	15
GY-50-63	50-63	M16x1,5	112	50	8	27	22	19	27,5	23	22	27	16	22	40	11