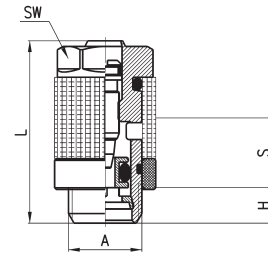


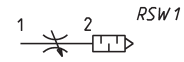
Silenced exhaust controllers Mod. SCO + 2905



The flow control valve Mod. SCO and the silencer Mod. 2905 are supplied separately.

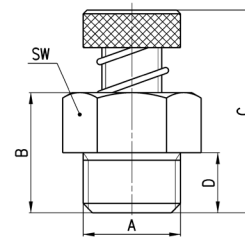


DIMENSIONS					
Mod.	A	H	L	S	SW
SCO 602-M5+2905 M5	M5	3.5	21.5	5.5	8
SCO 604-1/8+2905 1/8	G1/8	5	31.5	12.5	12
SCO 606-1/4+2905 1/4	G1/4	6	32.5	12.5	15

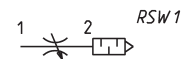


Series RSW flow control valves with silencer

Ports: G1/8, G1/4, G1/2.



DIMENSIONS						
Mod.	A	B	C	D	SW	Q* (NI/min)
RSW 1/8	G1/8	10.5	22	6	13	410
RSW 1/4	G1/4	13	27	7.5	16	650
RSW 3/8	G3/8	16	30	9.5	20	1100
RSW 1/2	G1/2	18	40	10.5	26	1700



*determined with supply pressure 6 bar with free flow; ensuring screw is open to maximum output.