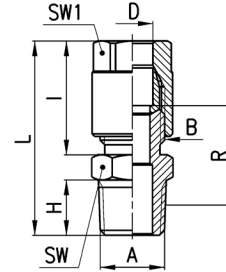


Fittings Mod. 1050



BSPT Male Connector

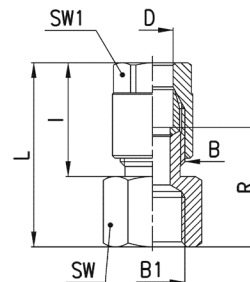


| DIMENSIONS | | | | | | | | | | |
|-------------|----|------|---------|------|------|------|------|----|-----|------------|
| Mod. | D | A | B | H | I | L | R | SW | SW1 | Weight (g) |
| 1050 4-1/8 | 4 | R1/8 | 1/8 | 7,5 | 19 | 31 | 14 | 12 | 12 | 19 |
| 1050 6-1/8 | 6 | R1/8 | 1/8 | 7,5 | 19 | 31 | 14 | 12 | 12 | 18 |
| 1050 6-1/4 | 6 | R1/4 | 1/8 | 11 | 19 | 35 | 16,5 | 14 | 12 | 23 |
| 1050 8-1/8 | 8 | R1/8 | 1/4 | 7,5 | 23 | 35 | 15,5 | 14 | 14 | 29 |
| 1050 8-1/4 | 8 | R1/4 | 1/4 | 11 | 23 | 39 | 18 | 14 | 14 | 33 |
| 1050 8-3/8 | 8 | R3/8 | 1/4 | 11,5 | 23 | 39,5 | 18 | 17 | 14 | 40 |
| 1050 10-1/4 | 10 | R1/4 | 3/8 | 11 | 25,5 | 41,5 | 18 | 17 | 17 | 51 |
| 1050 10-3/8 | 10 | R3/8 | 3/8 | 11,5 | 25,5 | 42 | 18 | 17 | 17 | 55 |
| 1050 10-1/2 | 10 | R1/2 | 3/8 | 14 | 25,5 | 45 | 18 | 22 | 17 | 65 |
| 1050 12-1/4 | 12 | R1/4 | M18x1,5 | 11 | 24,5 | 40,5 | 12 | 19 | 19 | 56 |
| 1050 12-3/8 | 12 | R3/8 | M18x1,5 | 11,5 | 24,5 | 41 | 12 | 19 | 19 | 58 |
| 1050 12-1/2 | 12 | R1/2 | M18x1,5 | 14 | 24,5 | 44 | 12 | 22 | 19 | 68 |

* = with bi-conical olive

Fittings Mod. 1063

BSP Female Connector



| DIMENSIONS | | | | | | | | | | |
|------------|---|------|-----|----|------|------|----|-----|------------|--|
| Mod. | D | B1 | B | I | L | R | SW | SW1 | Weight (g) | |
| 1063 4-1/8 | 4 | G1/8 | 1/8 | 19 | 29 | 18,5 | 13 | 12 | 19 | |
| 1063 6-1/8 | 6 | G1/8 | 1/8 | 19 | 29 | 18,5 | 13 | 12 | 18 | |
| 1063 6-1/4 | 6 | G1/4 | 1/8 | 19 | 30,5 | 20 | 17 | 12 | 25 | |
| 1063 8-1/8 | 8 | G1/8 | 1/4 | 23 | 33 | 20 | 14 | 14 | 31 | |
| 1063 8-1/4 | 8 | G1/4 | 1/4 | 23 | 34,5 | 21,5 | 17 | 14 | 35 | |