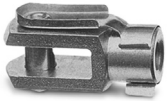
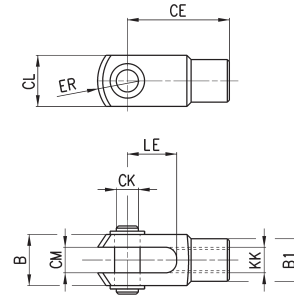


Rod Fork End Mod. G-94/90



ISO 8140
Material: stainless steel 303

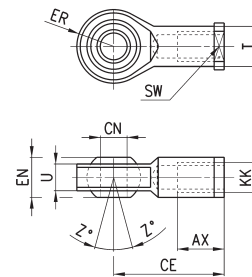


DIMENSIONS										
Mod.	∅	CK	LE	KK	CM	ER	CE	CL	B	B1
G-94-12-16	16	6	12	M6x1	6	7	24	12	16	10
G-94-20	20	8	16	M8x1,25	8	10	32	16	22	14
G-90-25-32	25	10	20	M10x1,25	10	12	40	20	26	18

Swivel Ball Joint Mod. GA-94/90



ISO 8139
Materials:
- stainless steel 304 bracket
- stainless steel 420 spherical ring
- sintered bronze bushing

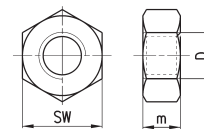


DIMENSIONS											
Mod.	∅	CN	U	EN	ER	AX	CE	KK	T	Z	SW
GA-94-12-16	16	6	7	9	10	12	30	M6x1	10	6,5	11
GA-94-20	20	8	9	12	12	16	36	M8x1,25	12,5	6,5	14
GA-90-32	25	10	10,5	14	14	20	43	M10x1,25	15	6,5	17

Piston Rod Lock Nut Mod. U-94/90



ISO 4035
Material: stainless steel 304

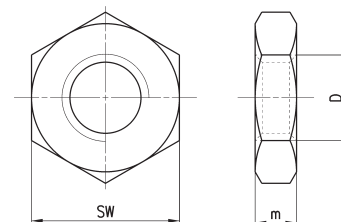


DIMENSIONS				
Mod.	∅	D	m	SW
U-94-12-16	16	M6x1	4	10
U-94-20	20	M8x1,25	5	13
U-90-25-32	25	M10x1,25	6	17

Nose Nut Mod. V-94 and Mod. U-90



ISO 4035
Material: stainless steel 304

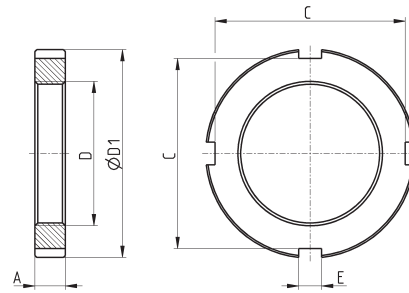


DIMENSIONS				
Mod.	∅	D	m	SW
U-90-50-63	16	M16x1,5	8	24
V-94-20-25	20-25	M22x1,5	10	32

Nose nut Mod. V-97



Material: stainless steel 304

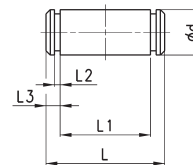


DIMENSIONS							
Mod.	Ø	A	D	ØD1	E	C	
V-97-32	32	7	M30x1.5	42	5	38	
V-97-40	40	8	M38x1.5	55	6	50	
V-97-50-63	50-63	10	M45x1.5	60	6	53	

Clevis pin Mod. S-90



Supplied with:
1x clevis pin in stainless steel 303
2x seeger in steel

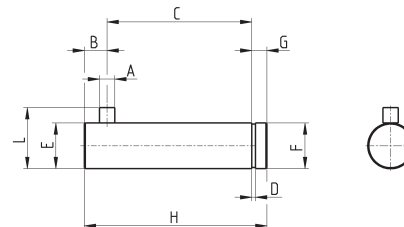


DIMENSIONS							
Mod.	Ø	Ød	L	L1	L2	L3	
S-90-32	32	10	53	46	1.1	3	
S-90-40	40	12	60	53	1.1	3	
S-90-50	50	12	68	61	1.1	3	
S-90-63	63	16	78	71	1.1	3	

Antirotating clevis pin Mod. SR-90



Supplied with:
1x antirotating clevis pin
in stainless steel 316
1x seeger in steel



DIMENSIONS											
Mod.	Ø	A	B	C	D	E	F	G	H	L	
SR-90-32	32	3	4.5	32.5	1.1	10	9.6	4	41	14	
SR-90-40	40	4	6	38	1.1	12	11.5	4	48	16	
SR-90-50	50	4	6	43	1.1	16	15.2	5	54	20	
SR-90-63	63	4	6	49	1.1	16	15.2	5	60	20	