

Mini ball valves in 316 stainless steel Series X29

SERIES X29 MINI BALL VALVES



- » Compact dimensions
- » Maximum flow capability
- » Easy-to-operate lever

These mini ball valves are used to open or close air or fluid flows in industrial applications with aggressive fluids or gases and where space is extremely limited.

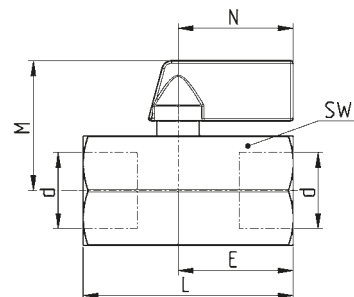
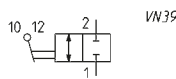
The miniaturised dimensions and light weight of Series X29 enable an easy installation at any point of the system, also thanks to the threaded connection.

GENERAL DATA

Function	2/2-way
Operation	90° lever rotation
Threads	G1/4, G3/8, G1/2, R1/4, R3/8, R1/2
Orifice diameter	from 7 mm to 9.2 mm
Operating pressure	0 ÷ 10 bar
Operating temperature	-15 °C ÷ 80 °C
Materials	valve body, rod, ball: 316 stainless steel; ball seals: PTFE; rod sealing ring: FKM; Lever: Aluminum
Medium	compressed air, inert gases, water, oil and all fluids compatible with them mini ball valves component materials

Mini ball valves, MINI version - Mod. X2943

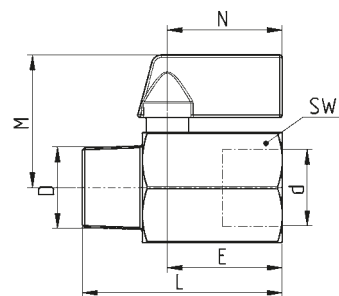
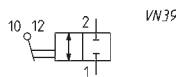
2/2 in-line, Female-Female BSPP Threads



DIMENSIONS							
Mod.	d	DN	E	L	M	N	SW
X2943 1/4	G1/4	7	23	42	26	23	22
X2943 3/8	G3/8	7	23	42	26	23	22
X2943 1/2	G1/2	9,2	23	46	28	23	25

Mini ball valves, MINI version - Mod. X2944

2/2 in-line, Male BSPT-Female BSPP Threads



DIMENSIONS								
Mod.	d	D	DN	E	L	M	N	SW
X2944 1/4-1/4	G1/4	R1/4	7	23	40	26,5	23	22
X2944 3/8-3/8	G3/8	R3/8	7	23	40	26,5	23	22
X2944 1/2-1/2	G1/2	R1/2	9,2	23	45,6	28,3	23	25