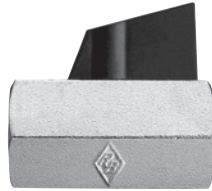


Mini Ball Valves

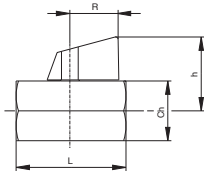
Connections: 1/8, 1/4, 3/8, 1/2

Our range of Mini Ball Valves offers a wide variety of choices for the design engineer.

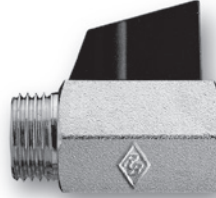
Part Number: 3830*
Lever - Female/Female



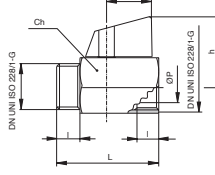
3830



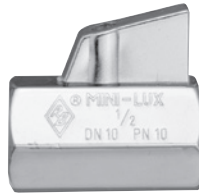
Part Number: 3831*
Lever - Male/Female



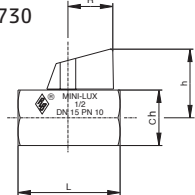
3831



Part Number: 3730*
Lever - Female/Female



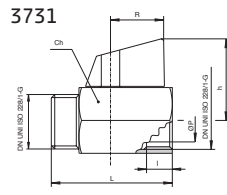
3730



Part Number: 3731*
Lever - Male/Female



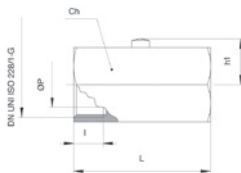
3731



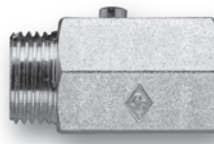
Part Number: 3860*
Screwdriver - Female/Female



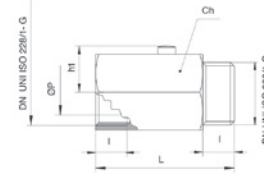
3860



Part Number: 3861*
Screwdriver - Male/Female



3861



Technical Data

Media

Most non-corrosive liquids and gases including air, water and fuels

Operating Pressure

10 bar (147 p.s.i.)

Operating Temperature

-20°C to +90°C (detail of valves for higher temperatures available on request)

Flow Rate

Flow rates stated in Kv: Flow coefficient in m³/h at differential pressure of 100kPa

Threads

UNI ISO 228/1

Materials

Body: Brass, chrome plated, types 3730 and 3731 polished chrome plated

Handle: Plastic, types 3830 and 3831 black, types 3730 and 3731 plastic chromed

Ball: Brass, chrome plated

Main Seal: PTFE

Stem Seal: NBR. Viton on request

Actuation Details

90° rotation of lever

We recommend that the valve is used in either the fully open or fully closed position. In addition, the valve should be actuated at least twice a year

Additional Options

NPT screwed end connections (M/F and F/F)

Viton stem seal for higher temperatures

Special Requests

For assistance, contact our technical office or your local Camozzi distributor.

- ✓ Ex Stock
- 🔧 UK Assembly
- ☎ Please Call Sales Office

Dimensions (mm)											
	DN	ØP	I	L	h	h1	Ch	R	Kv	PN	
*1/8	✓	6	8	8	41	29	13.8	21	20.5	4.3	10
*1/4	✓	8	8	10	41	29	13.8	21	20.5	4.3	10
*3/8	✓	10	8	10	41	29	13.8	21	20.5	2.7	10
*1/2	✓	15	10	11	46	31	15.8	25	20.5	5.4	10