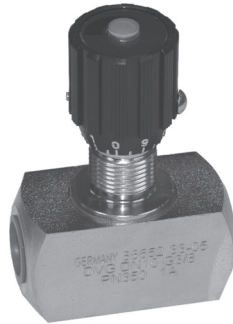


Flow Control & Needle Valves

Connections: 1/8 - 1 1/2 BSP

Inline needle valves with micrometer scale



- ✓ Ex Stock
- ✎ UK Assembly
- ☎ Please Call Sales Office

DV Series, Double Acting Flow Control & Shut-off (Bi-directional)

Part Number		BSP	BAR	LPM MAX
DV-G18	✓	1/8	350	10
DV-G14	✓	1/4	350	50
DV-G38	✓	3/8	350	75
DV-G12	✓	1/2	350	140
DV-G34	✓	3/4	350	175
DV-G100	✓	1	350	350
DV-G114	✓	1 1/4	350	350
DV-G112	✓	1 1/2	350	350



- ✓ Ex Stock
- ✎ UK Assembly
- ☎ Please Call Sales Office

DRV Series, Single Acting Flow Control, Free reverse Flow (Uni-directional)

Part Number		BSP	BAR	LPM MAX
DRV-G18	✓	1/8	350	10
DRV-G14	✓	1/4	350	50
DRV-G38	✓	3/8	350	75
DRV-G12	✓	1/2	350	140
DRV-G34	✓	3/4	350	175
DRV-G100	✓	1	350	350
DRV-G114	✓	1 1/4	350	350
DRV-G112	✓	1 1/2	350	350
DRV-G200	✓	2	350	350

Technical Data

Materials

DV/DRV: Carbon steel, Nitrile seals
 FT: Nickel plated brass (stainless steel where stated), Nitrile seals

Operating Pressure

DV/DRV: 350 BAR
 FT: 210 BAR

Operating Temperature

-20°C - to +100°C

Special Requests

For assistance, contact our technical office or your local Camozzi distributor.