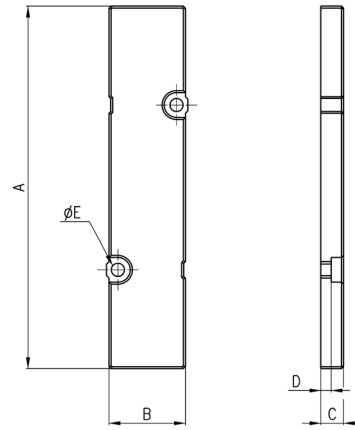


Blanking plate for manifolds - valves with outlets on the body



The following is supplied:
 1x blanking plate
 2x screws
 1x seal.

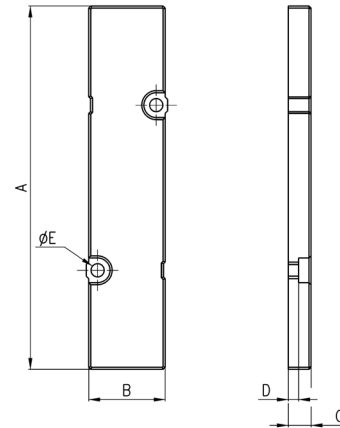


DIMENSIONS						
Mod.	Size	A	B	C	D	øE
TP-E521	10,5	66	10	6	3,5	2,1

Blanking plate for manifolds - base mounted valves



The following is supplied:
 1x blanking plate
 2x screws
 1x seal.

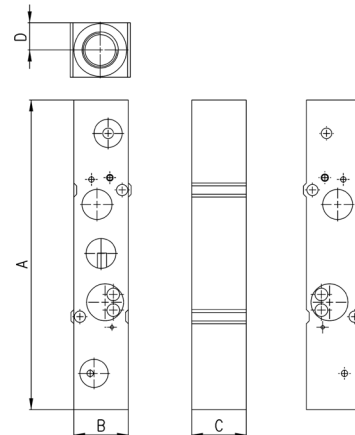


DIMENSIONS						
Mod.	Size	A	B	C	D	øE
TP-E520	10,5	66	10	6	3,5	2,1

Intermediate plate for valves to provide a separate supply in 1



Base mounted valves.
 The following is supplied:
 1x plate
 2x screws
 1x interface seal
 2x O-Ring.



DIMENSIONS						
Mod.	Size	A	B	C	D	E
PCP-E521	10,5	72,5	10	10	5	M5