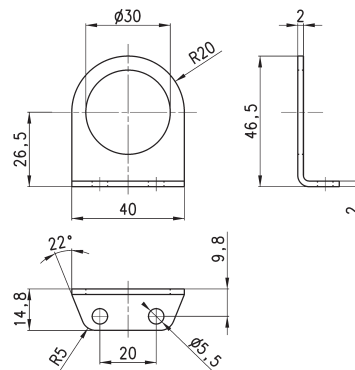


Mounting bracket Mod. C114-ST/1



For regulators and filter-regulators
(G1/4 - G1/8)

The kit is supplied with 1 zinc-plated steel bracket.

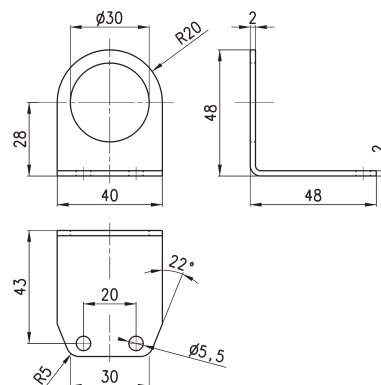
Mod.
C114-ST/1

Mounting bracket Mod. C114-ST/2



For regulators and filter-regulators
(G1/4 - G1/8)

The kit is supplied with 1 zinc-plated steel bracket.

Mod.
C114-ST/2

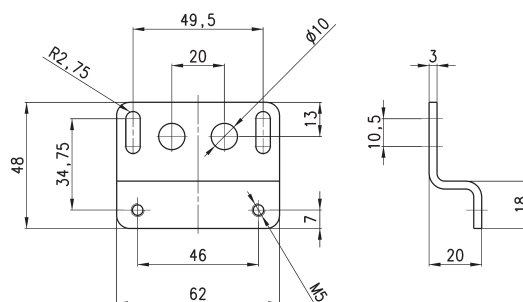
Mounting bracket Mod. C238-ST/1



for MC238 and MC202

The kit is supplied with:
1 bracket; 2 screws M5X65

Materials: zinc-plated steel bracket and screws.

Mod.
C238-ST/1