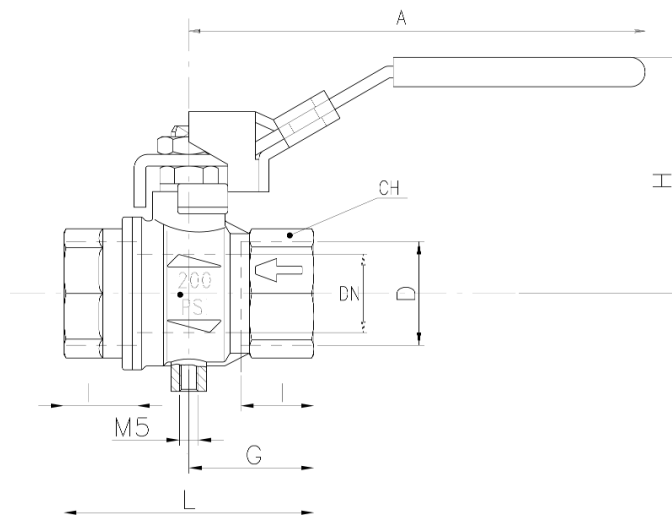


# Lockable Safety Ball Valve

Connections: 1/4, 3/8, 1/2, 1

Our lockable safety ball valve is for use as an on-off valve for pneumatic systems. In off position, vent hole in valve body allows air to be exhausted. In the off position, downstream air is exhausted to atmosphere through a small vent hole in the valve body. Locking feature allows maintenance and setting activities to be carried out safely on the system and prevents air supply being reactivated inadvertently.

Part Number: S93\*



	D(inch)	DN(mm)	J(mm)	L(mm)	G(mm)	A(mm)	H(mm)	AF(mm)
*B00	1/4	8	12	45	22.5	96	47.5	20
*C00	3/8	9.5	12	45	22.5	96	47.5	20
*D00	1/2	15	15.5	59	29.5	96	52	25
*F00	1	24	21	81	40.5	117	63.5	40

### Technical Data

**Media**

For use as an on-off valve for pneumatic systems

**Operating Pressure**

0 to 16 bar

**Operating Temperature**

-20°C to +90°C

**Threads**

UNI ISO 7/1

**Materials**

Body: Brass, nickel plated

Ball: Brass, hard chrome

Seals: PTFE

Handle: Steel zinc plated, blue plastic coated

Direction flow: As indicated by arrow

**Special Requests**

For assistance, contact our technical office or your local Camozzi distributor.