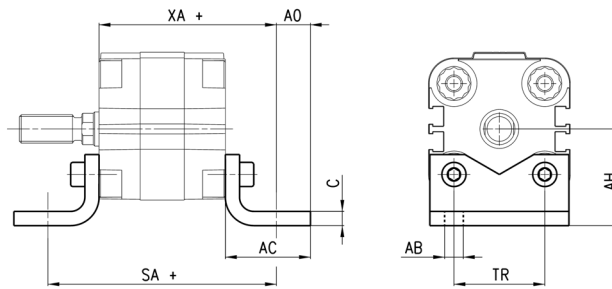


Foot mount Mod. B

Material: zinc-plated steel



Supplied with:
2x feet
4x screws
+ = add the stroke



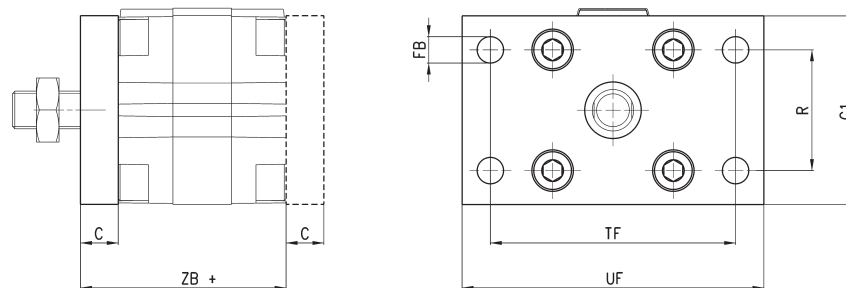
| DIMENSIONS | | | | | | | | | |
|------------|---------|-----|-------|------|-----|------|------|----|----|
| Mod. | ∅ | C | SA+ | XA+ | TR | AB | AH | AO | AC |
| B-31-12-16 | 12 - 16 | 3 | 64 | 51 | 18 | 5,5 | 22 | 7 | 20 |
| B-32-20 | 20 | 4 | 70 | 54 | 22 | 6,6 | 27 | 9 | 25 |
| B-31-25 | 25 | 4 | 71,5 | 55,5 | 26 | 6,6 | 29 | 9 | 25 |
| B-31-32 | 32 | 5 | 80,5 | 62,5 | 32 | 6,6 | 34 | 12 | 30 |
| B-31-40 | 40 | 5 | 85,5 | 65,5 | 42 | 9 | 40,5 | 10 | 30 |
| B-31-50 | 50 | 5,5 | 93,5 | 69,5 | 50 | 9 | 47 | 11 | 35 |
| B-31-63 | 63 | 5,5 | 104 | 77 | 62 | 11 | 56,5 | 13 | 40 |
| B-31-80 | 80 | 7,5 | 116 | 86 | 82 | 11 | 68,5 | 15 | 45 |
| B-31-100 | 100 | 7,5 | 132,5 | 99,5 | 103 | 13,5 | 81 | 12 | 45 |

Rear and front flange Mod. D-E

Material: zinc-plated steel



Supplied with:
1x flange
4x screws
+ = add the stroke



| DIMENSIONS | | | | | | | | |
|--------------|---------|----|------|-----|----|-----|-----|-----|
| Mod. | ∅ | C | ZB+ | TF | R | UF | G1 | FB |
| D-E-31-12-16 | 12 - 16 | 10 | 48 | 43 | - | 55 | 29 | 5,5 |
| D-E-32-20 | 20 | 10 | 48 | 55 | - | 70 | 36 | 6,6 |
| D-E-32-25 | 25 | 10 | 49,5 | 60 | - | 76 | 40 | 6,6 |
| D-E-31-32 | 32 | 10 | 54,5 | 65 | 32 | 80 | 50 | 7 |
| D-E-31-40 | 40 | 10 | 55,5 | 82 | 36 | 102 | 60 | 9 |
| D-E-31-50 | 50 | 12 | 57,5 | 90 | 45 | 110 | 68 | 9 |
| D-E-31-63 | 63 | 15 | 65 | 110 | 50 | 130 | 87 | 9 |
| D-E-31-80 | 80 | 15 | 71 | 135 | 63 | 160 | 107 | 12 |
| D-E-31-100 | 100 | 15 | 81,5 | 163 | 75 | 190 | 128 | 14 |