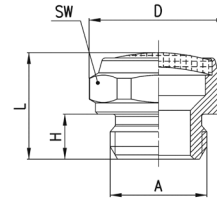


Silencers Series 2901

New model

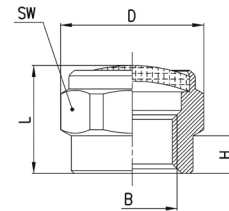


DIMENSIONS									
Mod.	A	D	H	L	SW	Max operating pressure (bar)	Flow rate (NL/min)	Noise db (A)	
2901 M5	* M5	9	4	8.5	8	10	150	66	* sintered bronze silencer element
2901 1/8	G1/8	15.3	5	12	14	10	700	76	
2901 1/4-17	G1/4	18.5	6	14	17	10	1000	78	
2901 1/4-22	G1/4	23.5	6	15	22	10	1600	80	
2901 3/8	G3/8	23.5	7	16	22	10	1500	76	
2901 1/2	G1/2	29.5	8	17.5	27	10	3400	86	
2901 3/4	G3/4	34	9	20	32	6	4100	87	
2901 1	G1	43	11	24.5	40	6	7600	88	

SIL 1



Silencers Series 2903

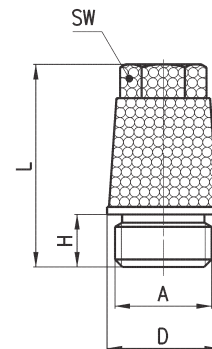


DIMENSIONS								
Mod.	B	D	H	L	SW	Max. Oper. Pressure	Flow rate NL/Min	Noise db (A)
2903 1/8	G1/8	15,3	4	11	14	10	700	74

SIL 1



Silencers Series 2921



DIMENSIONS								
Mod.	A	D	H	L	SW	Max. Oper. Pressure	Flow rate NL/Min	Noise db (A)
2921 1/8	G1/8	12	4,5	21,5	8	10	1730	81
2921 1/4	G1/4	15	6	28	10	10	3300	85
2921 3/8	G3/8	19	8	37	13	10	4250	79
2921 1/2	G1/2	23	9	43,5	15	10	6800	87
2921 3/4	G3/4	30	10	56	19	10	9800	84
2921 1	G1	37	12	67	24	10	10900	86

SIL 1

