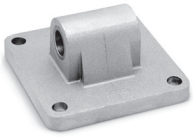
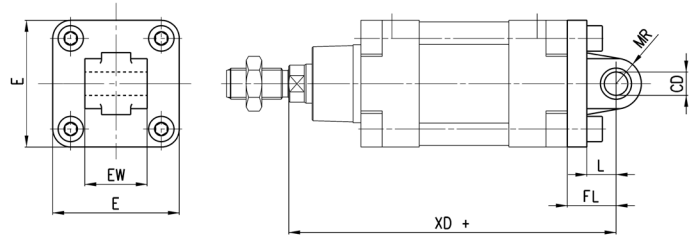


Rear male trunnion Mod. L



Material: Aluminium
Supplied with:
1x male trunnion
4x screws



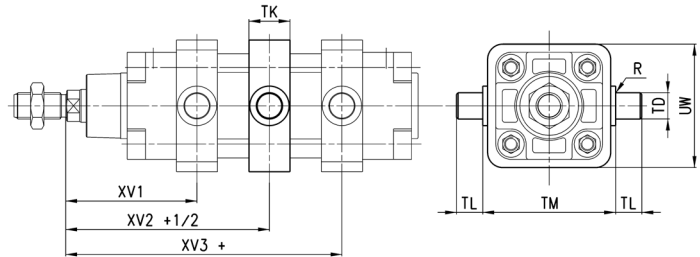
+ = add the stroke

DIMENSIONS								
Mod.	∅	∅CD	L	FL	XD+	MR	E	EW ^{-0.5-1.2}
L-41-160	160	30	35	55	315	30	175	90
L-41-200	200	30	35	60	335	30	215	90

Centre trunnion Mod. F



Material: white zinc-plated steel.
Supplied with:
1x centre trunnion
4x clamping elements
4x locking screws



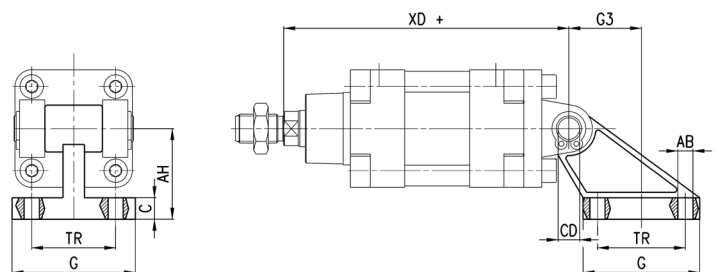
+ = add the stroke

DIMENSIONS										
Mod.	∅	XV1	XV+1/2	XV3+	TM	h	∅TD	TL	UW	R
F-41-160	160	145	170	195	200	40	32	32	200	0.2
F-41-200	200	160	185	210	250	40	32	32	250	0.2

90° Swivel combination Mod. ZS*



Material: Aluminium
* not according to standard



+ = add the stroke

DIMENSIONS									
Mod.	∅	TR	∅AB	AH	C	G	∅CD	XD+	G3
ZS-160	160	140	18	140	20	180	30	315	105
ZS-200	200	175	18	140	25	220	30	335	125