

GRIPFIT PUSH-IN FITTINGS

SERIES 7000 - BEVERAGE AND WATER FILTRATION

Tube external diameters: 4, 6, 8 mm
Fittings threads: ISO-228 BSPP (G1/8, G1/4, G3/8).



- Bio-sourced materials (composite)
- Low Lead Brass (CW510L)
- Easy connection and disconnection

Series 7000 Beverage and Water filtration is a new range of push-in fittings made of reinforced bio-sourced technopolymer and low lead brass. Thanks to the materials and new connection technology, these fittings are ideal for beverage dispensing and water filtration systems.



RoHS



Reach



21 CFR compliance



ISO 14743:2020



DM174 Drinking Water



Regulation (CE) n. 1935/2004 n. 2023/2006



NSF169** **



NSF61**



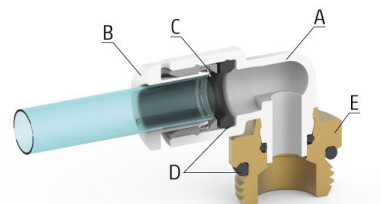
Regulation (CE) n. 2023/2006

*Check the NSF certified models here: <https://www.nsf.org/certified-products-systems>

** NSF169 and NSF61 currently available for brass straight fittings.

General Data

Diameter		Ø4 mm	Ø6 mm	Ø8 mm
Maximum working pressure	- 20° / + 40°	16 bar	16 bar	16 bar
	+ 40° / + 70°	16 bar	14 bar	12 bar
	+ 70° / + 100°	16 bar	12 bar	10 bar
Minimum working pressure		-0,9 bar		
Temperature		-20 ÷ +100 (see characteristics of tubes used) (NSF 61 requirement up to 82°C)		
Storage temperature [°C]		-10° ÷ +60°		
Threads		GAS cylindrical ISO-228 BSPP		
Connecting tube		Polyurethane (PU), Polyethylene (PE), Polyamide (PA), Fluoropolymer (PTFE), Polyester (HY3L), rigid metal pipe with smooth grooved metal end		
Fluid		Drinking and mains water, beverages and gas (for other fluids consult our technicians)		
Materials		(A) Body = Technopolymer (PA11), low lead brass (CW510L)		
		(B) Button = Technopolymer (PA66)		
		(C) Gripping ring = Stainless steel (AISI 301)		
		(D) Seals = EPDM		
		(E) Thread = Low lead brass (CW510L)		

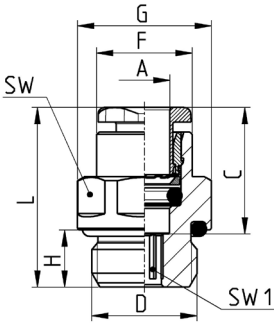


GRIPFIT PUSH-IN FITTINGS
SERIES 7000 - BEVERAGE AND WATER FILTRATION - DIMENSIONS

Male straight connector Mod. B6512



Low lead brass (CW510L)
Thread BSPP ISO-228

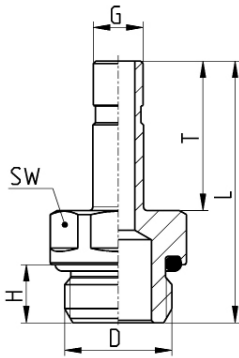


Mod.	A	D	C	F	G	H	L	SW	SW1	Weight [g]
B6512 4-1/8	4	G1/8	14,6	8,8	13,5	6	20	12	2,5	8
B6512 4-1/4	4	G1/4	14,6	8,8	16,4	7	21,5	15	2,5	12
B6512 6-1/8	6	G1/8	15,5	11,7	13,5	6	21	12	4	8
B6512 6-1/4	6	G1/4	15,5	11,7	16,4	7	22	15	4	11
B6512 8-1/8	8	G1/8	16,8	13,7	15,2	6	25,2	14	5	12
B6512 8-1/4	8	G1/4	16,8	13,7	16,4	7	24	15	6	14
B6512 8-3/8	8	G3/8	16,8	13,7	20,5	7	23,5	19	7	24

Male straight adaptor Mod. B6812



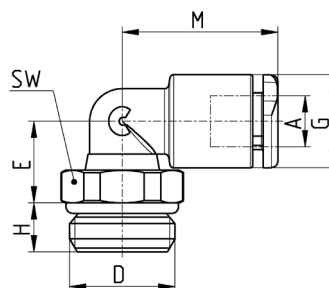
Low lead brass (CW510L) Thread BSPP ISO-228



Mod.	D	G	H	L	T	SW	Weight [g]
B6812 4-1/8	G1/8	4	6	29	16,5	12	9
B6812 4-1/4	G1/4	4	7	30	16,5	15	14
B6812 6-1/8	G1/8	6	6	30,5	18	12	10
B6812 6-1/4	G1/4	6	7	31,5	18	15	14,5
B6812 8-1/8	G1/8	8	6	33	20,5	12	12
B6812 8-1/4	G1/4	8	7	34	20,5	15	16,5
B6812 8-3/8	G3/8	8	7	36	20,5	19	26

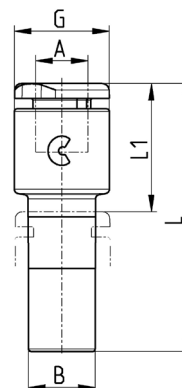
Swivel male elbow Mod. B7522

Thread BSPP ISO-228



Mod.	A	D	E	G	H	M	SW	Weight [g]
B7522 4-1/8	4	G1/8	9	9,2	5	17,5	12	7
B7522 4-1/4	4	G1/4	9	9,2	6	17,5	14	10
B7522 6-1/8	6	G1/8	10	11,4	5	19	12	8
B7522 6-1/4	6	G1/4	10	11,4	6	19	14	11
B7522 8-1/8	8	G1/8	13,5	13,7	5	21	12	11
B7522 8-1/4	8	G1/4	12	13,7	6	21	14	14
B7522 8-3/8	8	G3/8	12	13,7	7	21	19	19

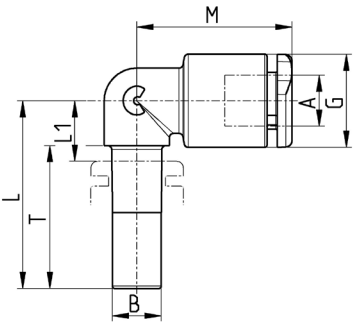
Reducer junction straight Mod. B7800



Mod.	A	B	G	L	L1	Weight [g]
B7800 4-6	4	6	9,3	30	14,5	2
B7800 4-8	4	8	9,3	31	14,5	3
B7800 6-8	6	8	11,4	32,5	15,5	4

GRIPFIT PUSH-IN FITTINGS
SERIES 7000 - BEVERAGE AND WATER FILTRATION - DIMENSIONS

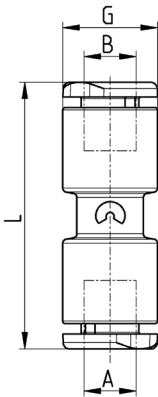
Equal junction elbow Mod. B7555



Mod.	A	B	G	L	L1	M	T	Weight [g]
B7555 4-4	4	4	9,2	21	7	19	16,5	2
B7555 6-6	6	6	11,4	23	8	19	17,5	4
B7555 8-8	8	8	13,7	25	9	21	18,5	5

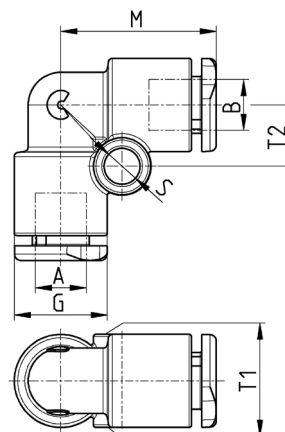
FITTINGS, CONNECTORS AND TUBES

Equal intermediate straight Mod. B7580



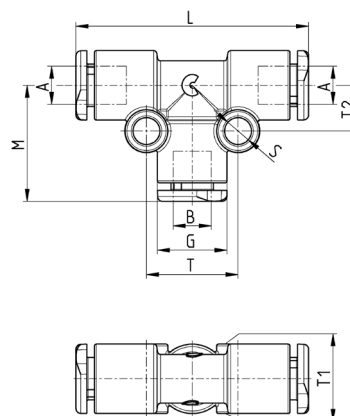
Mod.	A	B	G	L	Weight [g]
B7580 4	4	4	9,2	30	4
B7580 6	6	6	11,4	32	6
B7580 8	8	8	13,7	34,5	8

Equal intermediate elbow Mod. B7550



Mod.	A	B	G	M	S	T1	T2	Weight [g]
B7550 4	4	4	9,2	17,5	4	9,2	6,5	4
B7550 6	6	6	11,4	19	4	11,4	7,5	6
B7550 8	8	8	13,7	21	4	13,7	8,5	9

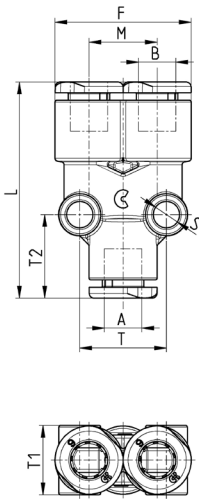
Equal intermediate tee Mod. B7540



Mod.	A	B	G	L	M	S	T	T1	T2	Weight [g]
B7540 4	4	4	9,2	35	17,5	4	12	9,2	6,5	6
B7540 6	6	6	11,4	38	19	4	15	11,4	7,5	9
B7540 8	8	8	13,7	42	21	4	17	13,7	8,5	14

GRIPFIT PUSH-IN FITTINGS
SERIES 7000 - BEVERAGE AND WATER FILTRATION - DIMENSIONS

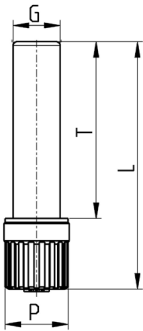
Equal intermediate Y Mod. B7560



Mod.	A	B	F	L	M	S	T	T1	T2	Weight [g]
B7560 4	4	4	18,2	34,2	9	4	10,8	9,5	13	6
B7560 6	6	6	23	36	11,4	4	14,5	11,5	14	9
B7560 8	8	8	27,2	40,5	13,5	4	17	14	15	15

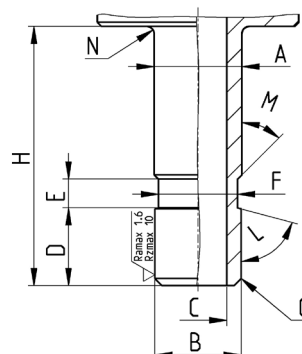
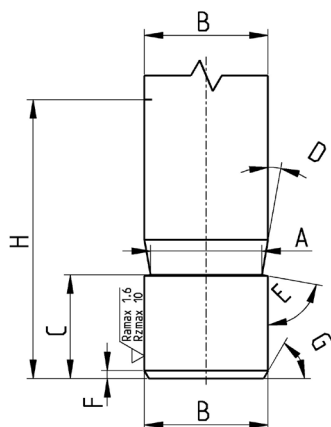
FITTINGS, CONNECTORS AND TUBES

Plastic male plug Mod. B6900



Mod.	G	L	P	T	Weight [g]
B6900 4	4	29	8	20	1
B6900 6	6	31,5	8	22,5	1
B6900 8	8	34,5	12	24,5	2

Groove for metal pipe



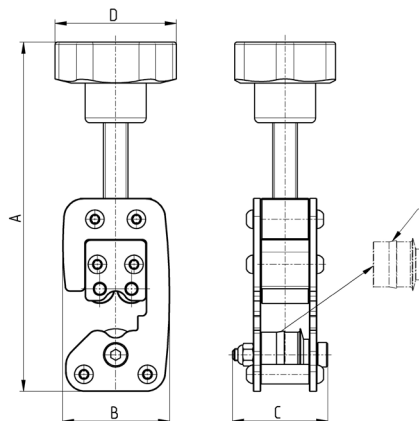
Made by Camozzi grooving tool 8TRT (or machining)

A	B	C	D	E	F	G	H
3,4	4	7	10°	80°	0,5	30°	16,5
5,2	6	6,25	10°	80°	0,5	30°	18
7,2	8	6,4	10°	80°	0,5	30°	20

Made by machining

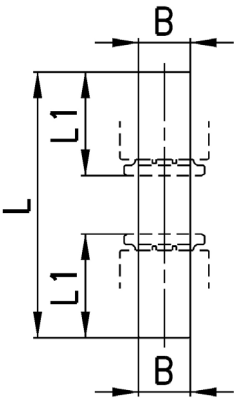
A	B	C	D	E	F	G	H	L	M	N
4,1	4	2	6	2	3,5	0,5x45°	16,5	75°	45°	0,5
6,1	6	4	5,4	2	5,5	0,5x45°	18	75°	45°	0,5
8,1	8	6	6	2	7,5	0,5x45°	20,5	75°	45°	0,5

Grooving tool for metallic tubes



Mod.	Tube Ø	A [max]	B	C	D	Weight [g]	E [spare wheel]
GTRT 4	4	138	43,5	39	50	450	RGTRT 4
8TRT 6	6	140	43,5	39	50	450	RTRT 6
8TRT 8	8	143	43,5	39	50	450	RTRT 8

Plastic junction Mod. 7950



Mod.	B	L	L1	Weight [g]
7950 4	4	37	14	1
7950 6	6	39	15	1
7950 8	8	41	16	1