

# Quick exhaust valves in 316L stainless steel

## Series XVSC



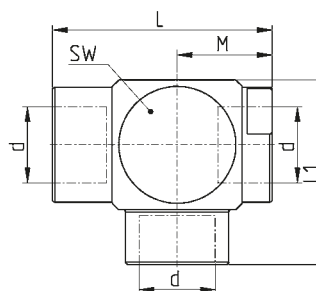
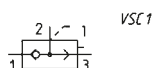
- » Suitable to rapidly discharge air contained in tanks, systems or cylinder chambers
- » Threaded version

Series XVSC quick exhaust valves are commonly used to increase the speed of cylinders or for rapid depressurisation of tanks containing compressed air.

### GENERAL DATA

Valve group	automatic valves
Construction	poppet-type
Materials	316L stainless steel FKM seals 1/8 1/4 polyurethane seals 3/8 1/2
Mounting	in any position
Threads	G1/8, G1/4, G1/2, G3/8 1/8 NPT, 1/4 NPT, 3/8 NPT, 1/2 NPT
Operating temperature	1/8 1/4 GAS/NPT -10°C ÷ 120°C 3/8 1/2 GAS/NPT -20°C ÷ +80°C
Medium	filtered air without lubrication

### Series XVSC quick exhaust valves



DIMENSIONS					
Mod.	d	M	L	L1	SW
XVSC 1/8	G1/8	16	37	32	22
XVSC 1/4	G1/4	16.5	37.5	31.5	22
XVSC 3/8	G3/8	19	44	37	26
XVSC 1/2	G1/2	31	54	45	32
XVSC 1/8PT	1/8NPT	16	37	32	22
XVSC 1/4PT	1/4NPT	16	37	32	22
XVSC 3/8PT	3/8NPT	19	44	37	26
XVSC 1/2PT	1/2NPT	31	54	45	32