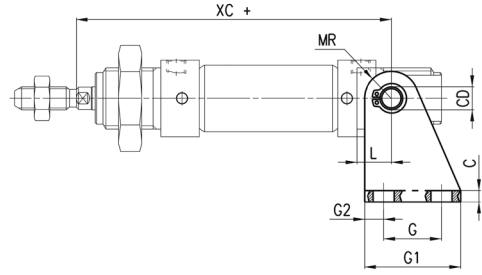
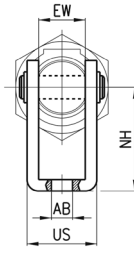


Rear trunnion bracket Mod. I



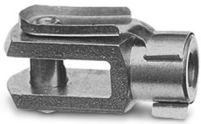
Supplied with:
1x zinc-plated steel rear trunnion
1x stainless steel clevis pin
2x steel Seeger



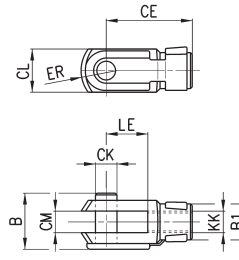
+ = add the stroke

DIMENSIONS													
Mod.	∅	EW	∅AB	US	NH	XC+	MR	L	G2	G	G1	CD	C
I-8-10	8-10	8	4,5	13,1	24	64	5	6	3,5	12,5	20	4	2,5
I-12-16	12	12	5,5	18,1	27	75	7	9	5	15	25	6	3
I-12-16	16	12	5,5	18,1	27	82	7	9	5	15	25	6	3
I-20-25	20	16	6,6	24,1	30	95	10	12	6	20	32	8	4
I-20-25	25	16	6,6	24,1	30	104	10	12	6	20	32	8	4

Rod fork end Mod. G



ISO 8140
Material: zinc-plated steel.

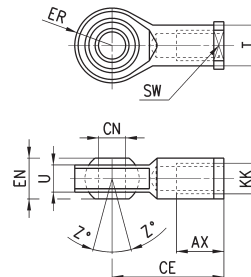


DIMENSIONS										
Mod.	∅	CL	ER	CE	B	CM	∅CK	LE	KK	∅B1
G-8-10	8-10	8	5	16	11	4	4	8	M4x0,7	8
G-12-16	12-16	12	7	24	16	6	6	12	M6x1	10
G-20	20	16	10	32	22	8	8	16	M8x1,25	14
G-25-32	25	20	12	40	26	10	10	20	M10x1,25	18

Swivel ball joint Mod. GA



ISO 8139
Material: zinc-plated steel.



DIMENSIONS											
Mod.	∅	$\theta_{CN}^{(H7)}$	U	EN	ER	AX	CE	KK	ØT	Z	SW
GA-8-10	8-10	5	6	8	9	10	27	M4x0.7	9	6.5°	9
GA-12-16	12-16	6	7	9	10	12	30	M6X1	10	6.5°	11
GA-20	20	8	9	12	12	16	36	M8X1.25	12.5	6.5°	14
GA-32	25	10	10.5	14	14	20	43	M10X1.25	15	6.5°	17

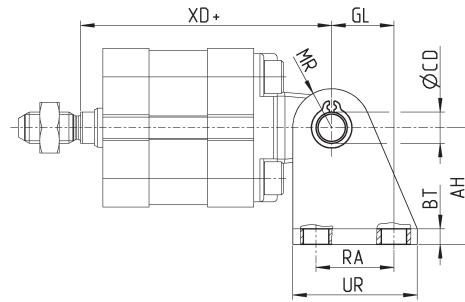
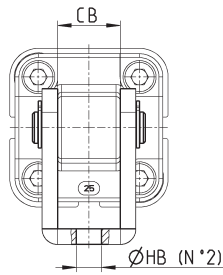
90° swivel combination for trunnion Mod. I

Material: zinc-plated steel.



Supplied with:
1x female support
2x seeger
1x clevis pin

+ = add the stroke

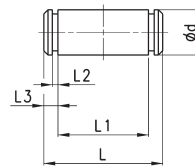


DIMENSIONS											
Mod.	∅	AT	BT	∅CD	CB	GL	∅HB	MR	RA	UR	XD
I-20-25	20	30	4	8	16,1	16	6,5	10	20	32	62,5
I-20-25	25	30	4	8	16,1	16	6,5	10	20	32	64,5

Clevis pin Mod. S



Supplied with:
1x clevis pin in stainless steel
2x Seeger in steel



DIMENSIONS						
Mod.	∅	D	L	L1	L2	L3
S-32	32	10	52	46	1,1	3
S-40	40	12	59	53	1,1	3
S-50	50	12	67	61	1,1	3
S-63	63	16	77	71	1,1	3
S-80	80	16	97	91	1,1	3
S-100	100	20	121	111	1,3	5

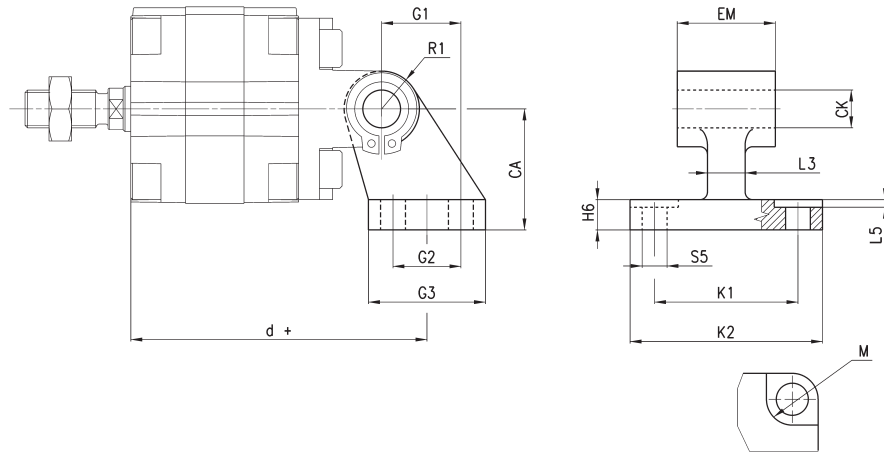
90° Swivel combination for female trunnion Mod. ZC



Male rear
Material: aluminium

Supplied with:
1x male support

+ = add the stroke



DIMENSIONS																
Mod.	∅	M	∅CK	∅S5	d+	K1	K2	L3	G1	L5	G2	EM	G3	CA	H6	R1
ZC-32	32	11	10	6,6	78,5	38	51	10	21	1,6	18	26	31	32	8	10
ZC-40	40	11	12	6,6	83,5	41	54	15	24	1,6	22	28	35	36	10	11
ZC-50	50	15	12	9	90,5	50	65	16	33	1,6	30	32	45	45	12	13
ZC-63	63	15	16	9	101,5	52	67	16	37	1,6	35	40	50	50	14	15
ZC-80	80	18	16	11	119	66	86	20	47	2,5	40	50	60	63	14	15
ZC-100	100	18	20	11	137,5	76	96	20	55	3,2	50	60	70	71	17	19

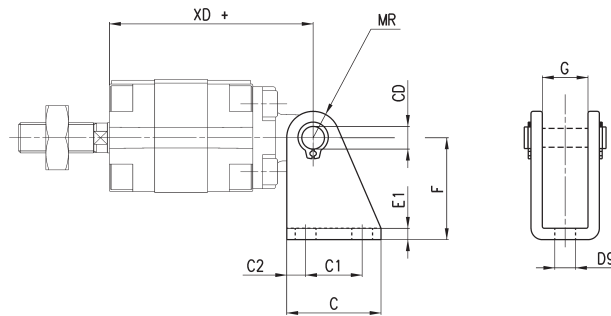
90° swivel combination for trunnion Mod. I



Material: zinc-plated steel

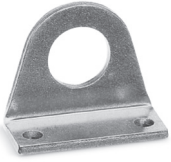
Supplied with:
2x Seeger
1x female support
1x piston pin

+ = add the stroke



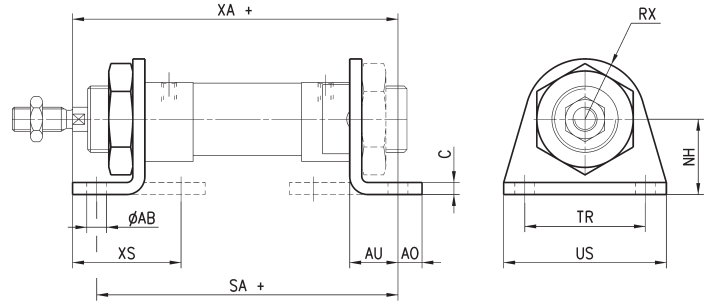
DIMENSIONS											
Mod.	∅	∅CD	C	C1	∅C2	XD+	MR	∅D9	E1	F	G
I-12-16	12	6	25	15	5	54	7	5,5	3	27	12,1
I-12-16	16	6	25	15	5	54	7	5,5	3	27	12,1
I-20-25	20	8	32	20	6	58	10	6	4	30	16,1
I-20-25	25	8	32	20	6	59,5	10	6	4	30	16,1

Foot mount Mod. B



Material: stainless steel 304

Supplied with:
2x feet
1x nut



+ = add the stroke

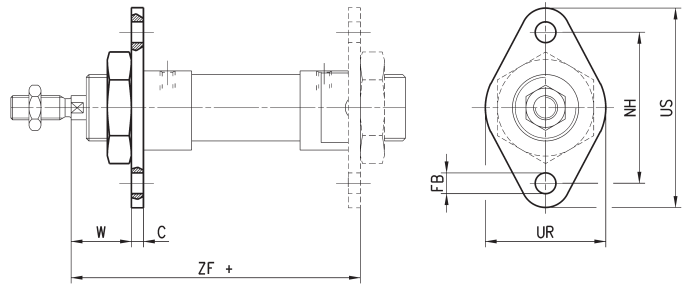
DIMENSIONS												
Mod.	Ø	ØAB	XS	XA+	SA+	AO	AU	C	RX	TR	US	NH
B-94-12-16	16	5,5	32	91	82	6	13	3	13	32	42	20
B-94-20-25	20	6,6	36	108	100	8	16	4	20	40	54	25
B-94-20-25	25	6,6	40	113	101	8	16	4	20	40	54	25

Flange bracket Mod. E



Material: stainless steel 304

Supplied with:
1x flange



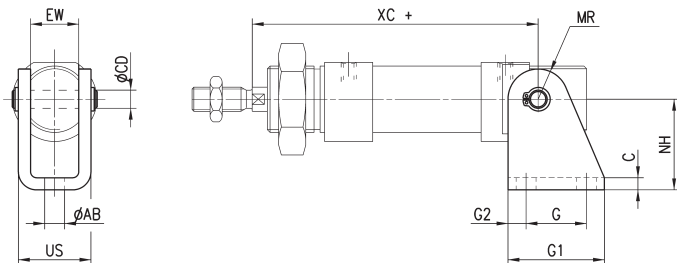
+ = add the stroke

DIMENSIONS									
Mod.	Ø	W	C	ZF+	FB	UR	TF	UF	
E-94-12-16	16	19	3	81	5,5	30	40	53	
E-94-20-25	20	20	4	96	6,6	40	50	66	
E-94-20-25	25	24	4	101	6,6	40	50	66	

Trunnion Bracket Mod. I



Material: stainless steel 304



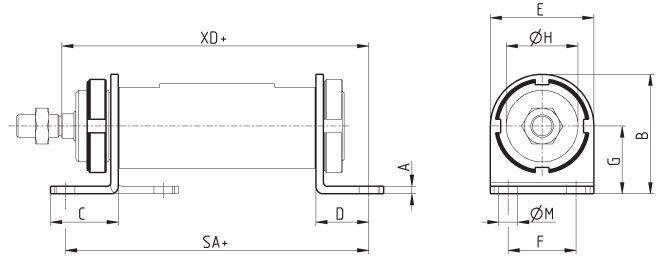
DIMENSIONS												
Mod.	Ø	AB	C	CD	EW	G	G1	G2	MR	NH	US	XC+
I-94-12-16	16	5,5	3	6	12	15	25	5	7	27	18,1	82
I-94-20-25	20	6,6	4	8	16	20	32	6	10	30	24,1	95
I-94-20-25	25	6,6	4	8	16	20	32	6	10	30	24,1	104

Foot mount Mod. B



Material: stainless steel 304

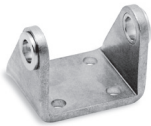
Supplied with:
1x nut
2x single feet



+ = add the stroke

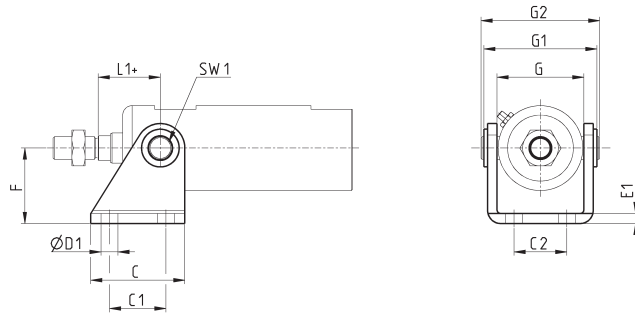
DIMENSIONS												
Mod.	∅	A	B	C	D	E	SA+	F	G	∅H	∅M	XD+
B-97-32	32	4	53	35	24	42	142	32	32	30	7	142
B-97-40	40	4	63.5	36	28	55	161	36	36	38	10	160
B-97-50	50	5	77.5	47	32	65	170	45	45	45	10	170
B-97-63	63	5	82.5	45	32	65	185	50	50	45	10	190

Trunnion bracket Mod. I



Material: stainless steel 304

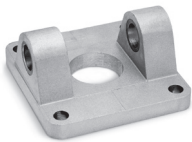
Supplied with:
1x female trunnion
2x cartridges



+ = add the stroke

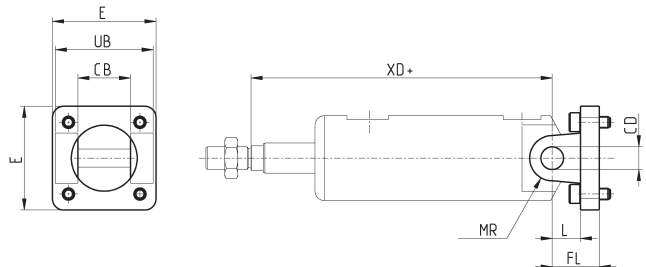
DIMENSIONS												
Mod.	∅	C	C1	C2	∅D1	E1	F	G	G1	G2	L1+	SW1
I-97-32	32	40	24	20	7	4	35	38	50	58	27	8
I-97-40	40	50	30	28	9	5	40	46	60	71	33	8
I-97-50	50	54	34	36	9	6	45	57	74	81	40	8
I-97-63	63	65	35	43	9	6	50	70	88	104	45	12

Rear female trunnion bracket Mod. C-H



Material: stainless steel 316

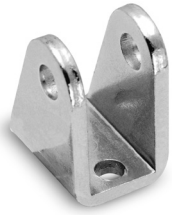
Supplied with:
1x female trunnion bracket
4x screws



+ = add the stroke

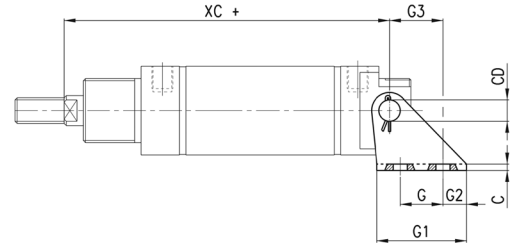
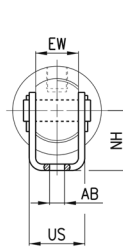
DIMENSIONS										
Mod.	∅	CB	CD	E	FL	L	MR	UB	XD+	
C-H-90-32	32	26	10	45	22	12	10	45	142	
C-H-90-40	40	28	12	55	25	15	12	52	160	
C-H-90-50	50	32	12	65	27	17	12	60	170	
C-H-90-63	63	40	16	75	32	20	16	70	190	

Rear trunnion bracket Mod. I (Ø 20, 25, 32, 40)



Material: zinc-plated steel

Supplied with:
1x female hinge
1x pin
2x Seeger



+ = add the stroke

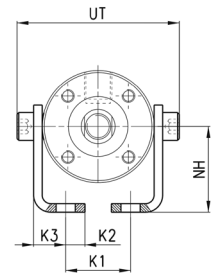
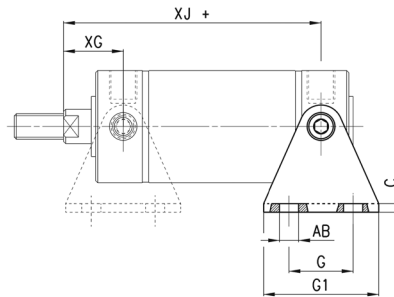
DIMENSIONS													
Mod.	Ø	G	G1	G2	G3	C	XC+	øAB	US	NH	øCD	EW	
I-27-20	20	15	30	8	18,5	1,5	77	5,5	15	20	6	12	
I-27-25	25	15	33	9	20	2	78,5	6,6	18	22	8	14	
I-27-32	32	15	35	10	20	2	93	6,6	20,5	25	8	16	
I-27-40	40	20	42	11	25	3	96	7	26	28	10	20	

Rear trunnion bracket Mod. I



Material: zinc-plated steel

Supplied with:
2x pins
2x feet



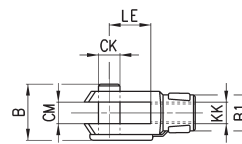
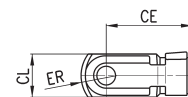
+ = add the stroke

DIMENSIONS													
Mod.	Ø	G	G1	C	XJ+	XG	øAB	K1	K1	K2	K3	NH	UT
I-27-50	50	30	54	4	84	26	9	9	30,5	9	15	40	68
I-27-63	63	40	64	5	86	26	9	9	40,5	9	17,5	47	84

Rod fork end Mod. G



Material: zinc-plated steel
ISO 8140



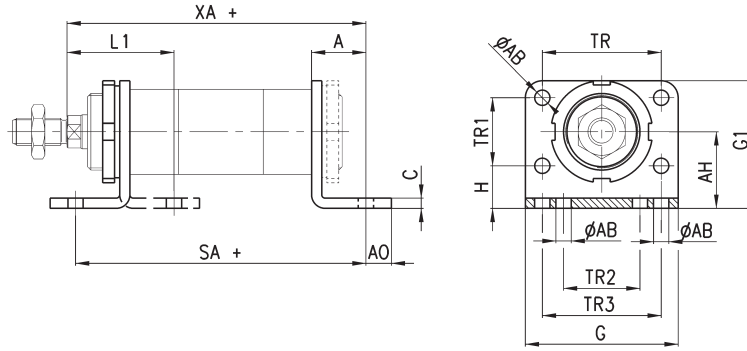
DIMENSIONS										
Mod.	Ø	øCK	LE	CM	CL	ER	CE	KK	B	øB1
G-20	20	8	16	8	16	10	32	M8x1,25	22	14
G-25-32	25-32	10	20	10	20	12	40	M10x1,25	26	18
G-40	40-50	12	24	12	24	14	48	M12x1,25	32	20
G-50-63	63	16	32	16	32	19	64	M16x1,5	40	26

Foot mount Mod. P



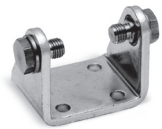
Material: zinc-plated steel.

Supplied with:
1x nut
2x single feet
+ = add the stroke



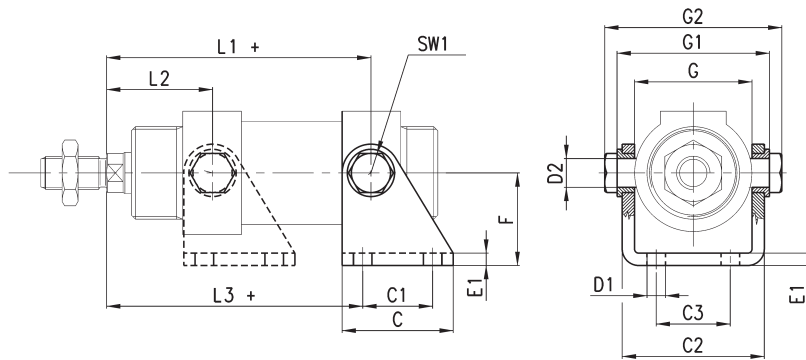
DIMENSIONS																
Mod.	∅	L1	SA +	XA +	A	AB	AO	AH	C	G	G1	TR	TR1	TR2	TR3	H
P-42-32	32	46	142	144	24	7	11	32	4	66	53	52	28	32	52	18
P-42-40	40	53	161	163	28	9	15	36	5	80	61	60	30	36	60	21
P-42-50	50	63	170	175	32	9	15	45	6	90	75	70	40	45	70	25
P-42-63	63	63	185	190	32	9	10	50	6	96	85	76	50	50	76	25

Trunnion Mod. I



Material: zinc-plated steel.

+ = add the stroke



DIMENSIONS																
Mod.	∅	L1 +	L2	L3 +	C	C1	C2	C3	D1	D2	E1	F	SW1	G	G1	G2
I-42-32	32	109,5	36,5	105,5	40	24	46,1	20	7	10	4	35	13	38,1	50,1	58,1
I-42-40	40	120	45	117	50	30	56,1	28	9	12	5	40	17	46,1	60,1	70,1
I-42-50	50	128,5	51,5	124,5	54	34	69,1	36	9	14	6	45	19	57,1	74,1	86,1
I-42-63	63	143	52	142	65	35	82,1	42	9	16	6	50	19	70,1	88,1	100,1