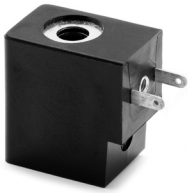
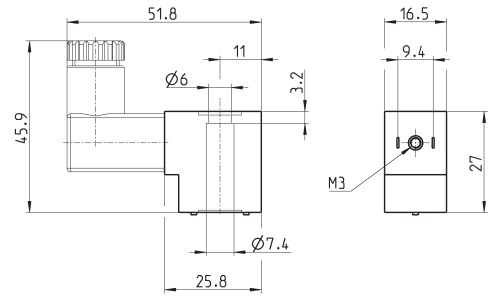


Solenoids Mod. GP...



Electrical connection: bipolar
Norm: industrial standard (9.4 mm)

Solenoid material: PA



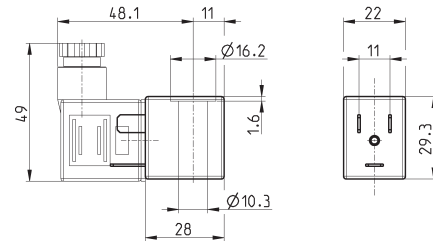
Mod.	Solenoid voltage	Power absorption
GP7	12 V DC	3 W
GP7	24 V DC	3 W

Solenoids Mod. B7...



Electrical connection: bipolar plus earth
Norm: DIN EN 175 301-803-B

Solenoid material: PA-MXD6

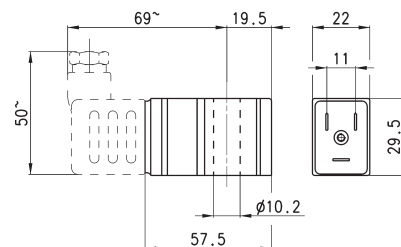


Mod.	Solenoid voltage	Power absorption
B7B	24 V - 50/60 Hz	9 VA
B7D	110 V - 50/60 Hz	9 VA
B7E	230 V - 50/60 Hz	9 VA
B7H	24 V - 50/60 Hz	4 VA
B72	12 V - DC	10 W
B73	24 V - DC	10 W
B74	24 V - DC	7 W

Solenoids Mod. G93 (with memory)



Electrical connection: bipolar plus earth
Norm: DIN EN 175 301-803-B
Voltage tolerance: ±10%
Pulsed operation (see description)



Mod.	Voltage	Minimum impulse latch/release	Consumption latch/release
G93	24 V DC	18 ms - 10 ms	168 mA - 80 mA