

Series CGA angular grippers

Magnetic

Sizes: Ø 10, 16, 20, 25, 32 mm

SERIES CGA ANGULAR GRIPPERS



- » Compact design
- » Flexible mounting
- » Optional mounting adaptors

For an easier installation the gripper can also be equipped with an optional installation adaptor mod. C-CGP (female) or L-CGP (male).

Series CGA angular grippers are available in 5 different sizes. The gripper opens and closes at angles between -10° and $+30^{\circ}$. The proximity switches can be inserted in the U-shaped grooves on the body. Grippers Series CGA have mounting holes on three sides which provide flexibility in installation.

GENERAL DATA

| | | | | | |
|-------------------------------------|---|------------|-------------------------------------|------------|------------|
| Model | CGA-10; CGA-16; CGA-20; CGA-25; CGA-32 | | | | |
| Bore sizes | Ø 10; Ø 16; Ø 20; Ø 25; Ø 32 | | | | |
| Type of operation | double-acting | | | | |
| Operating pressure | 1.5 ÷ 7 bar | | | | |
| Operating temperature | 0 ÷ 80°C | | | | |
| Max. operating frequency | 180 cycles/min | | | | |
| Lubrication | lever section - lubrication required on sliding section | | | | |
| Grip moment - closed M (Ncm) | 1,6xP 8xP 17xP 34xP 61xP | | P = operating pressure (bar) | | |
| Grip moment - open M (Ncm) | 2,6xP 11xP 23xP 43xP 81xP | | | | |
| Effective gripping force F (N) | F = M/L x0,85 | | L = distance of gripping point (cm) | | |
| Length of la. gripping point L (cm) | 3,0 | 4,0 | 6,0 | 7,0 | 8,5 |
| Weight (g) | Ø 10 = 40 | Ø 16 = 100 | Ø 20 = 200 | Ø 25 = 330 | Ø 32 = 540 |
| Lever open / closed angles | $-10^{\circ} \div +30^{\circ}$ | | | | |
| Port sizes | M5 (CGA-10 M3) | | | | |
| Magnet | magnet for proximity sensors in piston | | | | |
| Fluid | filtered air, without lubrication. If lubricated air is used, it is recommended to use oil ISOVG32. Once applied the lubrication should never be interrupted. | | | | |

CODING EXAMPLE

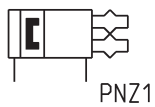
| | | |
|------------|---|-----------|
| CGA | - | 20 |
|------------|---|-----------|

| | | |
|------------|--|--------------------------|
| CGA | SERIES | PNEUMATIC SYMBOL PNZ1 |
| 20 | SIZES: 10 = ø 10 mm 16 = ø 16 mm 20 = ø 20 mm 25 = ø 25 mm 32 = ø 32 mm | |

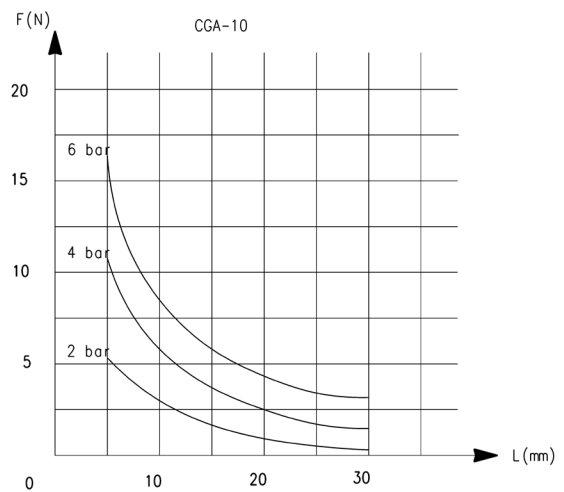
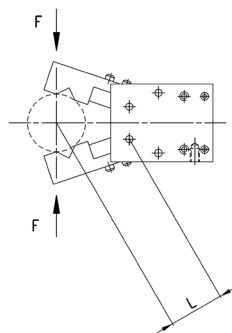
SERIES CGA ANGULAR GRIPPERS

PNEUMATIC SYMBOLS

The pneumatic symbols which have been indicated in the CODING EXAMPLE are shown below.



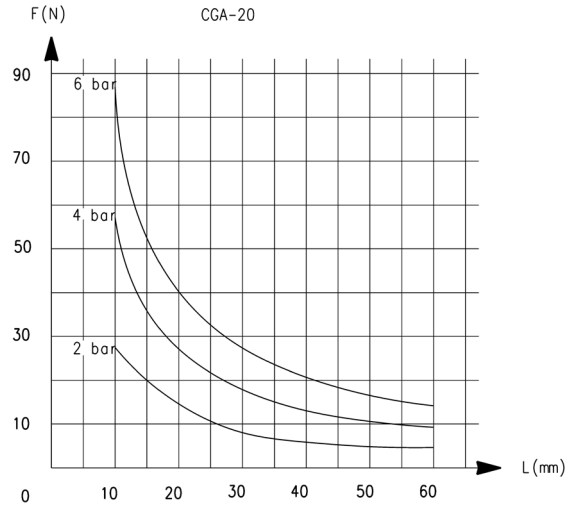
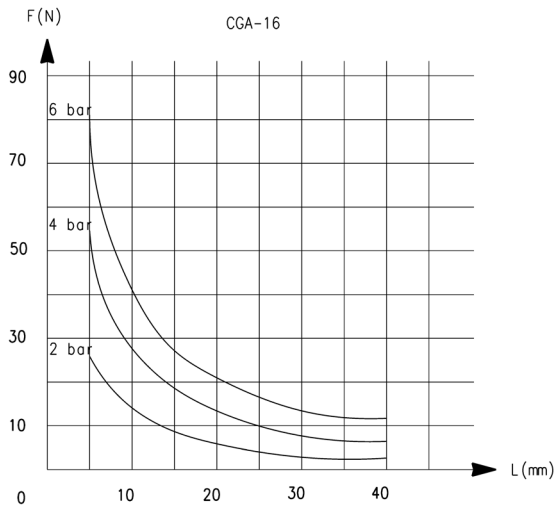
CLOSING GRIPPING FORCE - CHARACTERISTICS



L = Length of gripping point
F = Gripping force

L = Length of gripping point
F = Gripping force

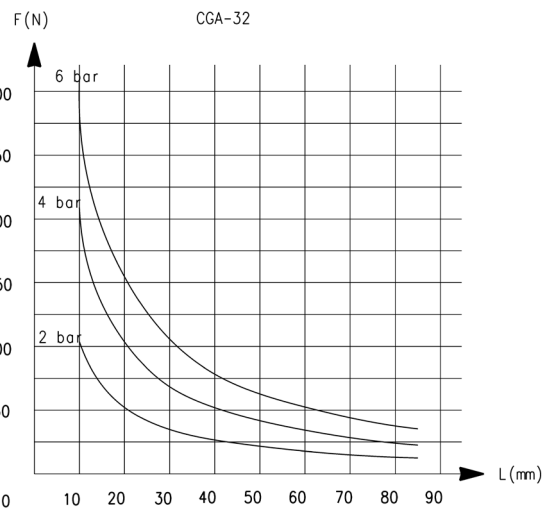
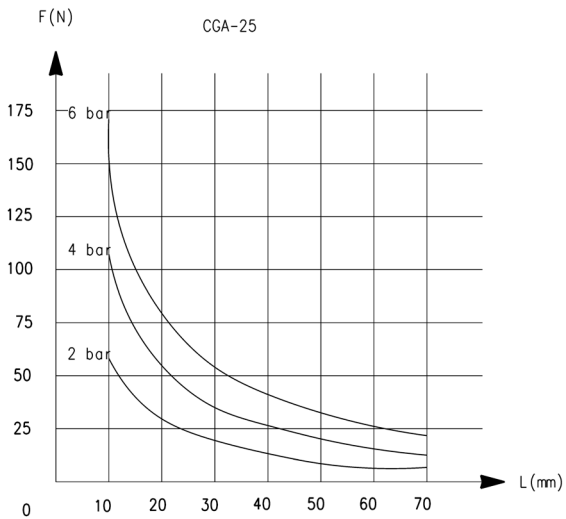
CLOSING GRIPPING FORCE - CHARACTERISTICS



L = Length of gripping point
F = Gripping force

L = Length of gripping point
F = Gripping force

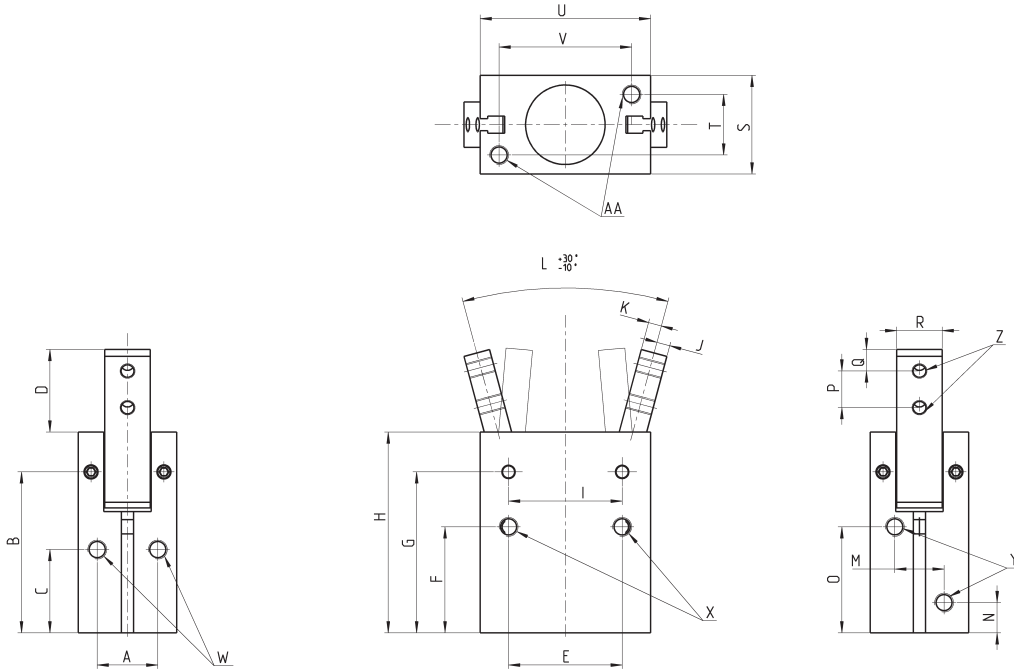
CLOSING GRIPPING FORCE - CHARACTERISTICS



L = Length of gripping point
F = Gripping force

L = Length of gripping point
F = Gripping force

Angular grippers Series CGA

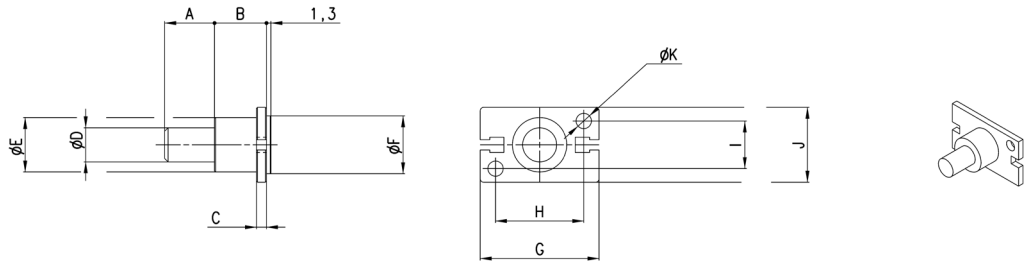


Y = port connection
 Z = finger mounting-holes
 X.W.AA = mounting holes

| DIMENSIONS | | | | | | | | | | | | | | | | | | | | | | |
|------------|----|------|------|------|----|------|------|------|----|-----|-----|----|----|-----|------|----|---|----|----|----|----|----|
| Mod. | A | B | C | D | E | F | G | H | I | J | K | L | M | N | O | P | Q | R | S | T | U | V |
| CGA-10 | 10 | 30.5 | 15.5 | 15.7 | 18 | 20 | 30.5 | 36.5 | 14 | 2.5 | 1.5 | 0° | 10 | 7.5 | 19 | 6 | 3 | 7 | 16 | 10 | 23 | 17 |
| CGA-16 | 14 | 38 | 21 | 17.5 | 24 | 25.5 | 38 | 45.5 | 24 | 3 | 3 | 0° | 12 | 7.5 | 25.5 | 8 | 3 | 9 | 22 | 14 | 34 | 26 |
| CGA-20 | 16 | 42,5 | 22 | 22 | 30 | 28 | 42.5 | 53 | 30 | 3.5 | 3.5 | 0° | 13 | 8 | 28 | 10 | 4 | 12 | 26 | 16 | 45 | 35 |
| CGA-25 | 20 | 48.5 | 24.5 | 26 | 36 | 31.5 | 48.5 | 61 | 36 | 4.5 | 4.5 | 0° | 18 | 9 | 31 | 12 | 5 | 14 | 32 | 20 | 52 | 40 |
| CGA-32 | 26 | 54 | 30 | 30 | 44 | 37.5 | 54 | 68 | 42 | 5 | 5 | 0° | 24 | 10 | 33.5 | 14 | 6 | 18 | 40 | 26 | 60 | 46 |

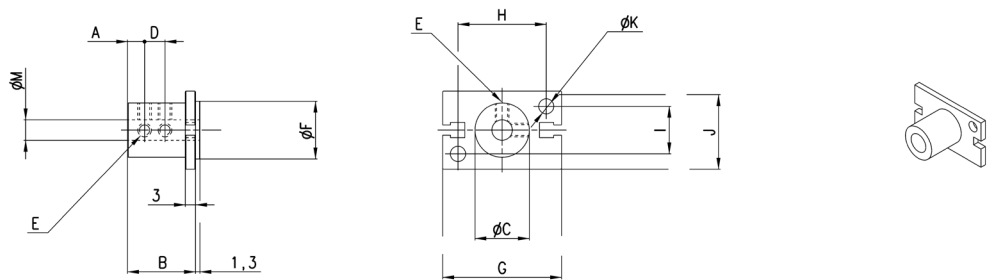
| DIMENSIONS | | | | | | | | | | | |
|------------|----------|---------|----------|---------|----------|---------|----------|---------|-----------|----------|--|
| Mod. | X thread | X depth | Y thread | Y depth | W thread | W depth | Z thread | Z depth | AA thread | AA depth | |
| CGA-10 | M3 | 7 | M3 | - | M3 | - | M3 | - | M3 | 5 | |
| CGA-16 | M4 | 11 | M5 | - | M4 | - | M3 | - | M4 | 7 | |
| CGA-20 | M5 | 13 | M5 | - | M5 | - | M4 | - | M5 | 8 | |
| CGA-25 | M6 | 15 | M5 | - | M6 | - | M5 | - | M6 | 10 | |
| CGA-32 | M6 | 20 | M5 | - | M6 | - | M6 | - | M6 | 10 | |

Mounting brackets Mod. L-CGP



| Mod. | A | B | C | D | E | F | G | H | I | J | K |
|----------|----|----|---|----|----|----|----|----|----|----|-----|
| L-CGP-16 | 15 | 15 | 3 | 10 | 16 | 17 | 35 | 26 | 14 | 22 | 4,5 |
| L-CGP-20 | 15 | 15 | 3 | 10 | 18 | 21 | 46 | 35 | 16 | 26 | 5,5 |
| L-CGP-25 | 25 | 17 | 5 | 14 | 26 | 26 | 53 | 40 | 20 | 32 | 6,6 |
| L-CGP-32 | 25 | 20 | 6 | 16 | 30 | 34 | 61 | 46 | 26 | 40 | 6,6 |

Mounting brackets Mod. C-CGP



| Mod. | A | B | C | D | E | F | G | H | I | J | K | M |
|----------|----|------|----|----|----|----|----|----|----|----|-----|----|
| C-CGP-16 | 5 | 20,5 | 16 | 7 | M4 | 17 | 35 | 26 | 14 | 23 | 4,5 | 6 |
| C-CGP-20 | 7 | 25,5 | 20 | 9 | M4 | 21 | 46 | 35 | 16 | 27 | 5,5 | 8 |
| C-CGP-25 | 8 | 30,5 | 25 | 10 | M4 | 26 | 53 | 40 | 20 | 33 | 6,6 | 10 |
| C-CGP-32 | 10 | 40,5 | 32 | 15 | M4 | 34 | 61 | 46 | 26 | 41 | 6,6 | 12 |