

# Silencers

2

Series: 2901 - 2903 - 2921 - 2931 - 2938 - 2939 - 2905 - RSW  
 Ports: M5, G1/8, G1/4, G3/8, G1/2, G3/4, G1



The silencers are indispensable elements for eliminating or reducing the characteristic noise of compressed air during discharge operations. They should always be placed on the outlets of 3/2, 5/2 or 5/3-way valves.

When carrying out maintenance, the silencers should be degreased using white spirit or paraffin and compressed air blown through them in the opposite direction to operation.

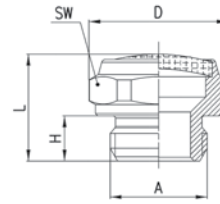
Flow rate: determined with inlet supply 6 bar and output in atmosphere.

Noise level: determined through a test which is carried out using a phonometer. Placing the phonometer one meter away from the application at the same height for a period of ten seconds gives an average reading of the noise generated.

## GENERAL DATA

<b>Construction</b>	body with male and female thread
<b>Materials used for body</b>	2901 - 2903: brass 2921 - 2931: coppering steel 2938 - 2939: polyethylene
<b>Materials used for silencing</b>	2901 - 2903: stainless steel 2921 - 2931: bronze (sintered) 2938 - 2939: polyethylene
<b>Ports</b>	M5 - G1/8 - G1/4 - G3/8 - G1/2 - G3/4 - G1

## Silencers Series 2901

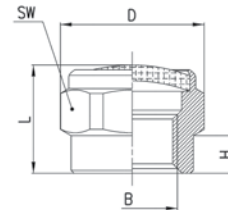


## DIMENSIONS

Mod.	A	D	H	L	SW	Max. Oper. Pressure	Flow rate NI/Min	Noise db (A)
<b>2901 1/8</b>	G1/8	15,3	5	12	14	10	700	75
<b>2901 1/4-17</b>	G1/4	18,5	6	14	17	10	1000	78
<b>2901 1/4-22</b>	G1/4	23,5	6	15	22	10	1600	92
<b>2901 3/8</b>	G3/8	23,5	7	16	22	10	1500	76
<b>2901 1/2</b>	G1/2	29,5	8	17,5	27	10	3400	86
<b>2901 3/4</b>	G3/4	34	9	20	32	6	4100	87
<b>2901 1</b>	G1	43	11	24,5	40	6	7600	88



## Silencers Series 2903

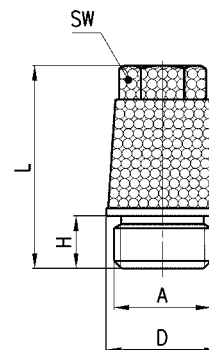


## DIMENSIONS

Mod.	B	D	H	L	SW	Max. Oper. Pressure	Flow rate NI/Min	Noise db(A)
<b>2903 1/8</b>	G1/8	15,3	4	11	14	10	700	74



## Silencers Series 2921

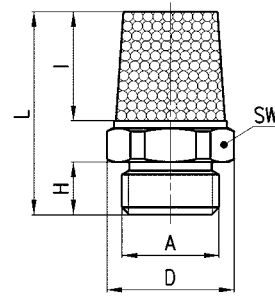


## DIMENSIONS

Mod.	A	D	H	L	SW	Max. Oper. Pressure	Flow rate NI/Min	Noise db(A)
<b>2921 1/8</b>	G1/8	12	4,5	21,5	8	10	1730	81
<b>2921 1/4</b>	G1/4	15	6	28	10	10	3300	85
<b>2921 3/8</b>	G3/8	19	8	37	13	10	4250	79
<b>2921 1/2</b>	G1/2	23	9	43,5	15	10	6800	87
<b>2921 3/4</b>	G3/4	30	10	56	19	10	9800	84
<b>2921 1</b>	G1	37	12	67	24	10	10900	86



Silencers Series 2931

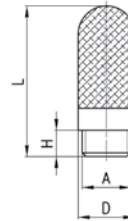


DIMENSIONS

Mod.	A	D	H	I	L	SW	Max. Oper. Pressure	Flow rate NI/Min	Noise db (A)
2931 M5	M5	7,7	4	8	16,5	7	10	450	69
2931 M7	M7	9	5	8,5	20	8	10	1130	76
2931 1/8	G1/8	13	4,5	13	21	12	10	1927	88
2931 1/4	G1/4	16,2	6	16,5	27	15	10	3200	86
2931 3/8	G3/8	20	7	23	35,5	19	10	4560	81
2931 1/2	G1/2	24,5	8	28	42	23	10	6800	87
2931 3/4	G3/4	32	9	37	54	30	10	9600	84
2931 1	G1	38,5	11	47	67	36	10	10800	86



Silencers Series 2938



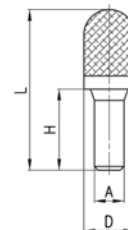
DIMENSIONS

Mod.	A	D	H	L	Max. Oper. Pressure	Flow rate NI/Min	Noise db (A)
2938 M5	M5	6,5	4,1	23	10	546	67
2938 1/8	G1/8	12,5	5,7	34	10	1441	75
2938 1/4	G1/4	15,5	7	42,5	10	2752	79
2938 3/8	G3/8	18,5	11,5	67,5	10	4735	73
2938 1/2	G1/2	23,5	11	77	10	8534	86



Operating temperature:  
- 40 / + 80 °C

Silencers Series 2939



DIMENSIONS

Mod.	A	D	H	L	Max. Oper. Pressure	Flow rate NI/Min	Noise db (A)
2939 4	4	7	16	32	10	335	80
2939 6	6	12,5	20,5	45	10	632	79
2939 8	8	13,5	21,5	43,5	10	1229	89
2939 10	10	15,5	26,5	57,5	10	2650	87

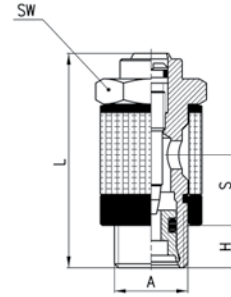


Operating temperature:  
- 40 / + 80 °C

## Silenced exhaust controller Mod. SCO + 290.....



See flow control valves



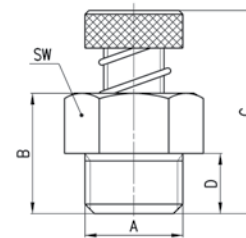
Mod.	A	H	L	S	SW
<b>SCO + 2905</b>	M5	3,5	21,5	5,5	8
<b>SCO + 2905</b>	1/8	6	35,5	12,5	14
<b>SCO + 2905</b>	1/4	8	37,5	12,5	17

## Silenced exhaust regulator Series RSW

Ports G1/8, G1/4 and G1/2



See flow control valves



Mod.	A	B	C	D	SW	Qn (NI /mm)
<b>RSW 1/8</b>	G 1/8	13	22	6	12	410
<b>RSW 1/4</b>	G 1/4	16	27	8	16	650
<b>RSW 1/2</b>	G 1/2	26	35	11	26	1590

Qn measured at 6 bar - Free flow,  
maximum screw opening.

