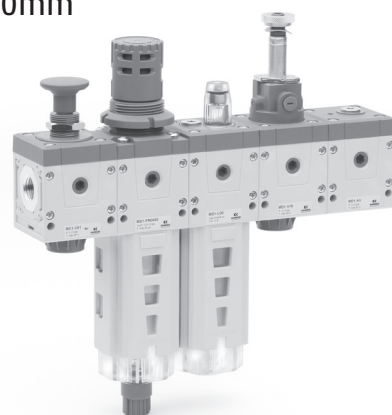


# Series MD FRL Assembled

Connections with interchangeable cartridges: threaded (1/8, 1/4, 3/8)  
or integrated with super-rapid fitting for tube with Ø 6, 8 and 10mm  
Modular assembly



SERIES MD FRL ASSEMBLED

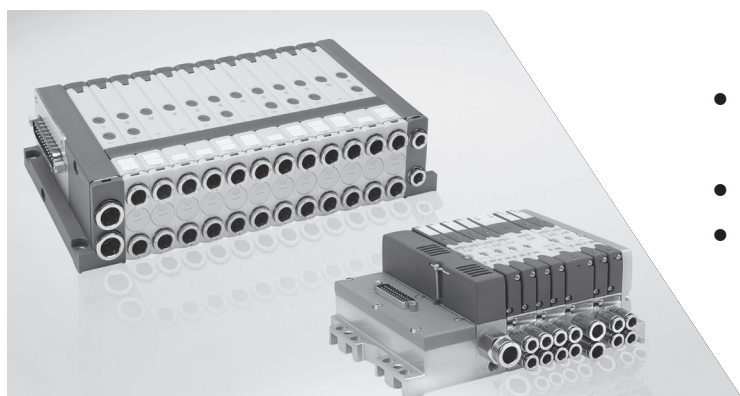
**CODING EXAMPLE**

<b>MD</b>	<b>1</b>	-	<b>000014</b>	-	<b>1/4</b>
-----------	----------	---	---------------	---	------------

<b>MD</b> SERIES: MD	
<b>1</b> SIZE: 1 = 42mm	<b>1/4</b> CONNECTIONS (IN/OUT): = no connection 1/8, 1/4, 3/8, 6, 8, 10
<b>000014</b>	
<p>GROUP COMPOSITION (25 micron):</p> <p>000014 = F000 + R000 + L00 000015 = FR0000 + L00 000016 = V01 + FR0000 + L00 000017 = V01 + FR0000 000018 = FR0000 + V16 + AV 000019 = FR0000 + L00 + V16 + AV 000020 = V01 + FR0000 + V16 + AV 000021 = V01 + FR0000 + L00 + V16 + AV + PRESS. NO 000022 = V01 + FR0000 + L00 + V16 + AV + PRESS. NC 000023 = V01 + FR0000 + V16 + AV + PRESS. NO 000024 = V01 + FR0000 + V16 + AV + PRESS. NC</p>	<p>GROUP COMPOSITION (5 micron):</p> <p>000025 = F100 + R000 + L00 000026 = FR1000 + L00 000027 = V01 + FR1000 + L00 000028 = V01 + FR1000 000029 = FR1000 + V16 + AV 000030 = FR1000 + L00 + V16 + AV 000031 = V01 + FR1000 + V16 + AV 000032 = V01 + FR1000 + L00 + V16 + AV + PRESS. NO 000033 = V01 + FR1000 + L00 + V16 + AV + PRESS. NC 000034 = V01 + FR1000 + V16 + AV + PRESS. NO 000035 = V01 + FR1000 + V16 + AV + PRESS. NC 000036 = F150 + FC050</p>

Please see page 227 for Series MD Accessories

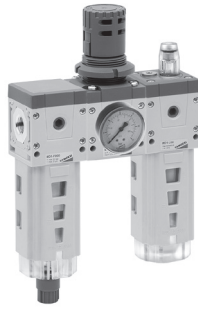
## UK Assembled Multipole Valve Islands



- Series HN (37 Pin, 32 Coils or 25 Pin, 24 Coils)
- Series F (25 Pin, 24 Coils)
- Next Day Delivery

**Composition of the assembled group 000014 and 000025**

- Components:  
Filter  
Regulator  
Lubricator  
Pressure Gauge  
Bracket



- ✓ Ex Stock
- ✎ UK Assembly
- ☎ Please Call Sales Office

25 micron filtering element		
Part Number	Availability	Connections
MD1-000014-1/8	✎	1/8
MD1-000014-1/4	✎	1/4
MD1-000014-3/8	✎	3/8
MD1-000014-6	✎	6
MD1-000014-8	✎	8
MD1-000014-10	✎	10

5 micron filtering element		
Part Number	Availability	Connections
MD1-000025-1/8	✎	1/8
MD1-000025-1/4	✎	1/4
MD1-000025-3/8	✎	3/8
MD1-000025-6	✎	6
MD1-000025-8	✎	8
MD1-000025-10	✎	10

**Composition of the assembled group 000015 and 000026**

- Components:  
Filter-regulator  
Lubricator  
Pressure Gauge  
Bracket



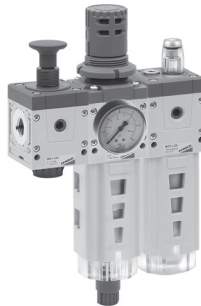
- ✓ Ex Stock
- ✎ UK Assembly
- ☎ Please Call Sales Office

25 micron filtering element		
Part Number	Availability	Connections
MD1-000015-1/8	✎	1/8
MD1-000015-1/4	✎	1/4
MD1-000015-3/8	✎	3/8
MD1-000015-6	✎	6
MD1-000015-8	✎	8
MD1-000015-10	✎	10

5 micron filtering element		
Part Number	Availability	Connections
MD1-000026-1/8	✎	1/8
MD1-000026-1/4	✎	1/4
MD1-000026-3/8	✎	3/8
MD1-000026-6	✎	6
MD1-000026-8	✎	8
MD1-000026-10	✎	10

**Composition of the assembled group 000016 and 000027**

- Components:  
Lockable isolation 3/2 valve  
Filter-regulator  
Lubricator  
Pressure Gauge  
Bracket



- ✓ Ex Stock
- ✎ UK Assembly
- ☎ Please Call Sales Office

25 micron filtering element		
Part Number	Availability	Connections
MD1-000016-1/8	✎	1/8
MD1-000016-1/4	✎	1/4
MD1-000016-3/8	✎	3/8
MD1-000016-6	✎	6
MD1-000016-8	✎	8
MD1-000016-10	✎	10

5 micron filtering element		
Part Number	Availability	Connections
MD1-000027-1/8	✎	1/8
MD1-000027-1/4	✎	1/4
MD1-000027-3/8	✎	3/8
MD1-000027-6	✎	6
MD1-000027-8	✎	8
MD1-000027-10	✎	10

Please see page 227 for Series MD Accessories

**Composition of the assembled group 000017 and 000028**

- Components:  
 Lockable isolation 3/2 valve  
 Filter-regulator  
 Pressure Gauge  
 Bracket



- ✓ Ex Stock
- 🔧 UK Assembly
- ☎ Please Call Sales Office

25 micron filtering element			5 micron filtering element		
Part Number	Availability	Connections	Part Number	Availability	Connections
MD1-000017-1/8	🔧	1/8	MD1-000028-1/8	🔧	1/8
MD1-000017-1/4	🔧	1/4	MD1-000028-1/4	🔧	1/4
MD1-000017-3/8	🔧	3/8	MD1-000028-3/8	🔧	3/8
MD1-000017-6	🔧	6	MD1-000028-6	🔧	6
MD1-000017-8	🔧	8	MD1-000028-8	🔧	8
MD1-000017-10	🔧	10	MD1-000028-10	🔧	10

**Composition of the assembled group 000018 and 000029**

- Components:  
 Filter-regulator  
 Isolation 3/2 valve  
 Soft start valve  
 Pressure Gauge  
 Bracket

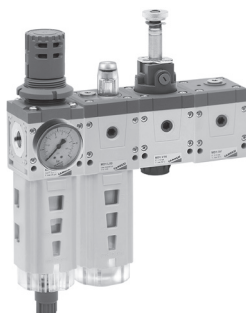


- ✓ Ex Stock
- 🔧 UK Assembly
- ☎ Please Call Sales Office

25 micron filtering element			5 micron filtering element		
Part Number	Availability	Connections	Part Number	Availability	Connections
MD1-000018-1/8	🔧	1/8	MD1-000029-1/8	🔧	1/8
MD1-000018-1/4	🔧	1/4	MD1-000029-1/4	🔧	1/4
MD1-000018-3/8	🔧	3/8	MD1-000029-3/8	🔧	3/8
MD1-000018-6	🔧	6	MD1-000029-6	🔧	6
MD1-000018-8	🔧	8	MD1-000029-8	🔧	8
MD1-000018-10	🔧	10	MD1-000029-10	🔧	10

**Composition of the assembled group 000019 and 000030**

- Components:  
 Filter-regulator  
 Lubricator  
 Isolation 3/2 valve  
 Soft start valve  
 Pressure Gauge  
 Bracket



- ✓ Ex Stock
- 🔧 UK Assembly
- ☎ Please Call Sales Office

25 micron filtering element			5 micron filtering element		
Part Number	Availability	Connections	Part Number	Availability	Connections
MD1-000019-1/8	🔧	1/8	MD1-000030-1/8	🔧	1/8
MD1-000019-1/4	🔧	1/4	MD1-000030-1/4	🔧	1/4
MD1-000019-3/8	🔧	3/8	MD1-000030-3/8	🔧	3/8
MD1-000019-6	🔧	6	MD1-000030-6	🔧	6
MD1-000019-8	🔧	8	MD1-000030-8	🔧	8
MD1-000019-10	🔧	10	MD1-000030-10	🔧	10

Please see page 227 for Series MD Accessories

# Series MD Accessories for FRL

- ✓ Ex Stock
- 🔧 UK Assembly
- 📞 Please Call Sales Office

## Threaded Cartridges MD1-A-...

The kit is supplied with:  
2x nickel-plated threaded cartridges  
4x special white zinc-plated screws Ø4.5 TC/RC



Part Number	Availability
<b>MD1-A-1/8</b>	✓
<b>MD1-A-1/4</b>	✓
<b>MD1-A-3/8</b>	✓

## Integrated Cartridges with super-rapid fitting MD1-A-...

The kit is supplied with:  
2x integrated nickel-plated cartridges with super-rapid fitting  
4x special white zinc-plated screws Ø4.5 TC/RC



Part Number	Availability
<b>MD1-A-6</b>	✓
<b>MD1-A-8</b>	✓
<b>MD1-A-10</b>	✓

## Intermediate Joining Cartridge MD1-C

The kit is supplied with:  
1x intermediate joining cartridge  
4x special white zinc-plated screws Ø4.5 TC/RC



Part Number	Availability
<b>MD1-C</b>	✓

## Screws for wall mounting MD1-D

The kit is supplied with:  
2x white zinc-plated screws M4x50



Part Number	Availability
<b>MD1-D</b>	✓

## Mounting Bracket MD1-ST/1

The kit is supplied with:  
1x zinc-plated bracket  
2x white zinc-plated screws M4x50



Part Number	Availability
<b>MD1-ST/1</b>	✓

## Mounting Bracket C114-ST

For regulators and filter-regulators (1/4-1/8)  
The kit is supplied with:  
1x zinc-plated steel bracket



Part Number	Availability
<b>C114-ST</b>	✓

## Mounting Bracket C114-ST/1

For regulators and filter-regulators (1/4-1/8)  
The kit is supplied with:  
1x zinc-plated steel bracket  
2x white zinc-plated screws M4x50



Part Number	Availability
<b>C114-ST/1</b>	✓

## Mounting Bracket C114-ST/2

For regulators and filter-regulators (1/4-1/8)  
The kit is supplied with:  
1x zinc-plated steel bracket



Part Number	Availability
<b>C114-ST/2</b>	✓