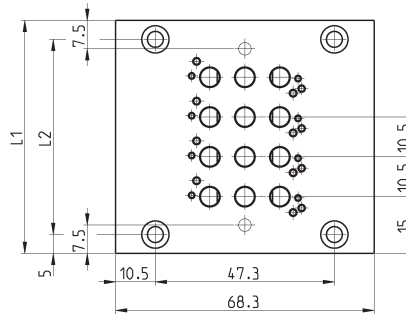
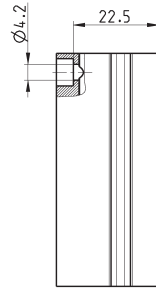
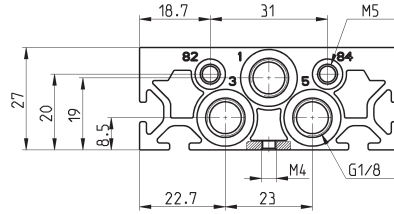


## Manifolds for valves with outlets on the body Size 10,5



The manifolds have been manufactured with common inlet and exhausts 3 and 5. There are also common exhausts for pilots 82 and 84.



Note: the manifolds are supplied complete with the seals and the valves, fixing screws.

DIMENSIONS													
Mod.	Size	Nr positions	02	03	04	05	06	07	08	09	10	11	12
E521-10..	10.5	L1	40.5	51	61.5	72	82.5	93	103.5	114	124.5	135	145.5
E521-10..	10.5	L2	30.5	41	51.5	62	72.5	83	93.5	104	114.5	125	135.5