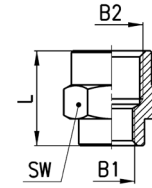


Fittings Mod. 2553

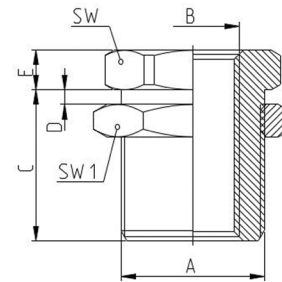
Reducing Sleeve



DIMENSIONS					
Mod.	B1	B2	L	SW	Weight (g)
2553 M5-1/8	M5	G1/8	13.5	13	7
2553 1/8-1/4	G1/8	G1/4	17	17	18
2553 1/8-3/8	G1/8	G3/8	18	20	18
2553 1/8-1/2	G1/8	G1/2	21.5	24	28
2553 1/4-3/8	G1/4	G3/8	21.5	20	21
2553 1/4-1/2	G1/4	G1/2	23	24	32
2553 3/8-1/2	G3/8	G1/2	24	24	31

Fittings Mod. 2593

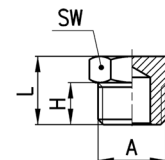
News



Mod.	A	B	C	D	E	SW	SW1
2593 M5-M10X1	M10x1	M5	10,5	7	3,5	14	14
2593 1/8-M16X1	M16x1	G1/8	14	10	4	19	22
2593 1/4-M20X1	M20x1,5	G1/4	21	16	4	24	27
2593 3/8-M26X1,5	M26x1,5	G3/8	21	15	5	30	32
2593 1/2-M28X1,5	M28x1,5	G1/2	27	21	6	32	36

Fittings Mod. 2611

BSP Male Plug



DIMENSIONS					
Mod.	A	H	L	SW	Weight (g)
2611 M5	M5	4	7,5	8	2
2611 1/8	G1/8	6	10,5	13	7
2611 1/4	G1/4	8	13	17	13
2611 3/8	G3/8	9	14	19	18
2611 1/2	G1/2	10	15,5	24	31
2611 1	G1	13	19	38	76