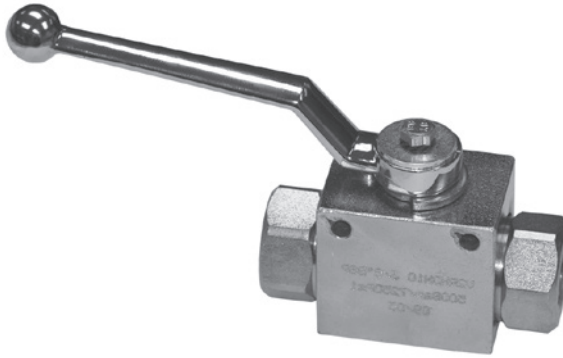


High Pressure Ball Valves (with fixing holes)

Connections: 1/4 - 1 1/2 BSP Female



Technical Data

Materials

Carbon steel, zinc passivated, BUNA

Operating Pressure

See table

Operating Temperature

-20°C - to +100°C

Special Requests

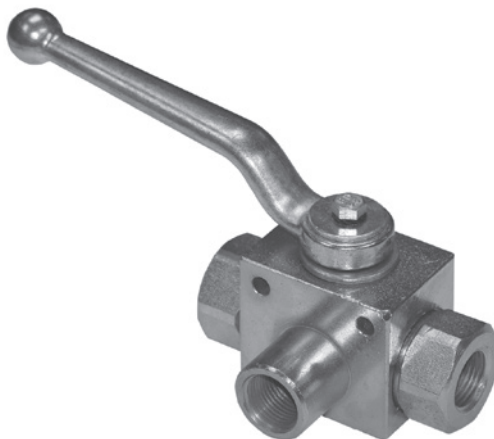
For assistance, contact our technical office or your local Camozzi distributor.

HYDRAULIC VALVES & ACCESSORIES

- ✓ Ex Stock
- ✎ UK Assembly
- ☎ Please Call Sales Office

Part Number: VF2* - VF2 Series 2-Way

DN	Thread	BAR	Carbon Steel	
6	1/4	500	*1113 G14	✓
10	3/8	500	*1113 G38	✓
13	1/2	500	*1113 G12	✓
20	3/4	320	*1113 G34	✓
25	1	320	*1113 G1	✓
25	1 1/4	320	*1113 G54	✓
25	1 1/2	320	*1113 G32	✓



- ✓ Ex Stock
- ✎ UK Assembly
- ☎ Please Call Sales Office

Part Number: VF3* - VF3 Series 3-Way L or T

DN	Thread	BAR	Carbon Steel	
6	1/4	500	*1113 G14	✓
10	3/8	500	*1113 G38	✓
13	1/2	500	*1113 G12	✓
20	3/4	250	*1113 G34	✓
25	1	250	*1113 G1	✓
25	1 1/4	250	*1113 G54	✓
25	1 1/2	250	*1113 G32	✓