

## Air-saving system

When gripping an object, the ejector remains active until a preset vacuum value is reached. Once reached the preset vacuum value, the ejector is shut OFF. If the vacuum level drops below the preset limit value, the ejector is re-activated by the electronic control circuit until the preset vacuum value is reached again.

Note: VEC ejectors with air-saving system are delivered complete with connectors and cables.

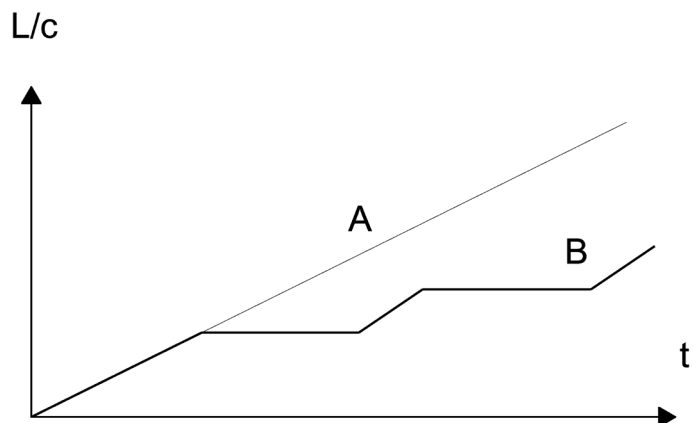


Mod.	
VEC-10/15-A	A = version Normally Open
VEC-10/15-C	C = version Normally Closed
VEC-20/25-A	A = version Normally Open
VEC-20/25-C	C = version Normally Closed

The air saving circuit, where used, switches the suction signal to "ON" apart from the fact that the ejector is NC or NO; this means that, in order to switch the internal loop back to "OFF", it is necessary to activate the signal on the coil controlling it (green cable).

## Applications example

- \* Evacuation time = time necessary for the ejector to reach a vacuum level of -600 mbar
- \*\* Air consumption l/cycle =  $(105/60) \times 5 = (105 / 60) \times 0,05$
- \*\*\* Prod. cycles/day = 8 hours x  $3600 \text{ s} = 28.800/20 \text{ s per cycle} = 1440 \text{ cycles} \times 2 \text{ shifts} = 2880 \text{ cycles}$



Operating conditions	without air-saving "A"	With air-saving "B"
Model	VEC-15C2-VE	VEC-15C2-RE
Air consumption l/min	105	105
Transport time (sec.)	5	5
Evac. time to -600 mbar (sec.)*	0,05	0,05
Total time vacuum ON (sec.)	5	0,05
Air consumption (l/cycle)**	8,8	0,087
Cycle time (sec.)	20	20
Prod. cycles/day (2-shifts)***	2880	2880
Daily air consumption (l)	25.361	250

In this example the air-saving system saves around 99% of the air.