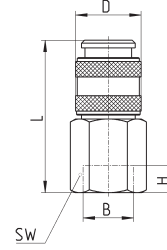


Fittings Mod. 5053L and 5053LT



BSP female quick-coupling



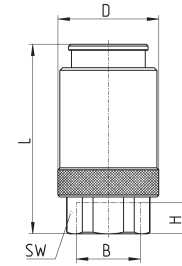
Mod.	B	D	H min	L	SW	weight (g)	Symbol
5053L 1/8	G1/8	17	6	37	14	34	VNR3
5053L 1/4	G1/4	17	7	39	17	44	VNR3
5053LT 1/8	G1/8	17	6	37	14	34	VNR2
5053LT 1/4	G1/4	17	7	39	17	44	VNR2



Fittings Mod. 5083L and 5083LT



BSP female quick-coupling



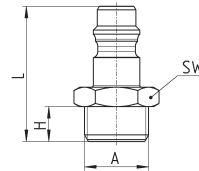
Mod.	B	D	H min	L	SW	weight (g)	Symbol
5083L 1/4	G1/4	26	10	47.5	17	104	VNR3
5083L 3/8	G3/8	26	8	49	20	110	VNR3
5083LT 1/4	G1/4	26	10	47.5	17	104	VNR2
5083LT 3/8	G3/8	26	8	49	20	110	VNR2



Fittings Mod. 5150L and 5180L



Male connector



Mod.	A	H	L	SW	weight (g)
5150L 1/8	G1/8	6	26.5	13	11
5150L 1/4	G1/4	8	29	17	17
5180L 1/4	G1/4	8	34	17	21
5180L 3/8	G3/8	9	35	19	25

