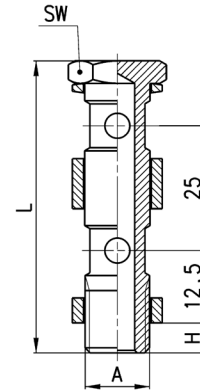


Fittings Mod. 1635 02



Double Long Banjo Stem

Assembled with adjustable fittings Mod. 6610; 6620; 1610; 1620; 2023; 1170



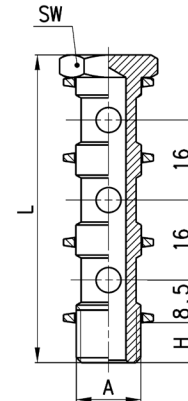
DIMENSIONS					
Mod.	A	H	L	SW	Weight (g)
1635 02-1/8	G1/8	6	56	14	26
1635 02-1/4	G1/4	8	58,5	17	33
1635 02-3/8	G3/8	8	59	19	64
1635 02-1/2	G1/2	9	60	27	111

Fittings Mod. 1631 03



Triple Banjo Stem

Assembled with adjustable fittings Mod. 6610; 6620; 1610; 1620; 2023; 1170

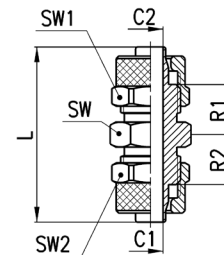


DIMENSIONS					
Mod.	A	H	L	SW	Weight (g)
1631 03-1/8	G1/8	6	59	14	24
1631 03-1/4	G1/4	8	61,5	17	42
1631 03-3/8	G3/8	8	62	19	62

Fittings Mod. 1580



Union Connector



DIMENSIONS										
Mod.	Tube	C1	C2	L	R1	R2	SW	SW1	SW2	Weight (g)
1580 5/3	5/3	2	2	28,5	7,5	7,5	8	8	8	8
1580 6/4	6/4	3	3	34,5	10	10	12	12	12	22
1580 8/6	8/6	5	5	34,5	9,75	9,75	13	14	14	28
1580 10/8	10/8	6,5	6,5	38	10,5	10,5	14	16	16	38
1580 12/10	12/10	8,5	8,5	41	10,5	10,5	17	19	19	55
1580 15/12,5	15/12,5	11	11	45	11	11	22	22	22	80
1580 8/6-6/4	8/6-6/4	5	3	34,5	9,75	9,75	13	12	14	24
1580 10/8-6/4	10/8-6/4	6,5	3	36,5	10,5	10	14	12	16	31