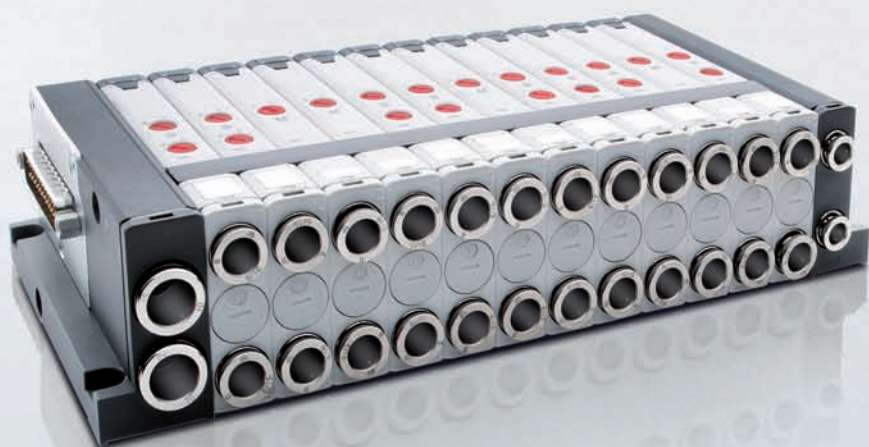




Short form catalogue

## Valve islands Series F





## Valve islands **Series F**

*The new Camozzi solution:  
compact, reliable and flexible*

The new valve islands **Series F** are designed to satisfy the most demanding customers who require at the same time both reliability and cost effective solutions.

The Series F is a very compact valve system that combines quality, flexibility and installation.

- Completely made in technopolymer (PBT)
- All pneumatic connections on one side
- Modularity: 1
- Size: 12 mm - 14 mm
- Nominal flow rate: 250 NI/min - 500 NI/min
- Interchangeable cartridge fittings (for tube Ø 4, 6 and 8 mm)
- Cartridge micro pilots: K8
- Temperature range: 0 ÷ 50°C
- Working pressure: -0.9 ÷ 10 bar

### *General data*

#### **High flow rate, maximum reliability**

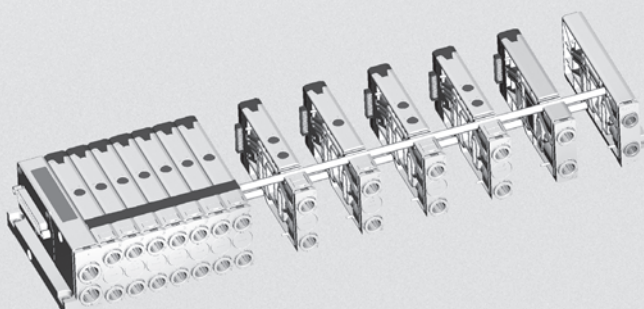
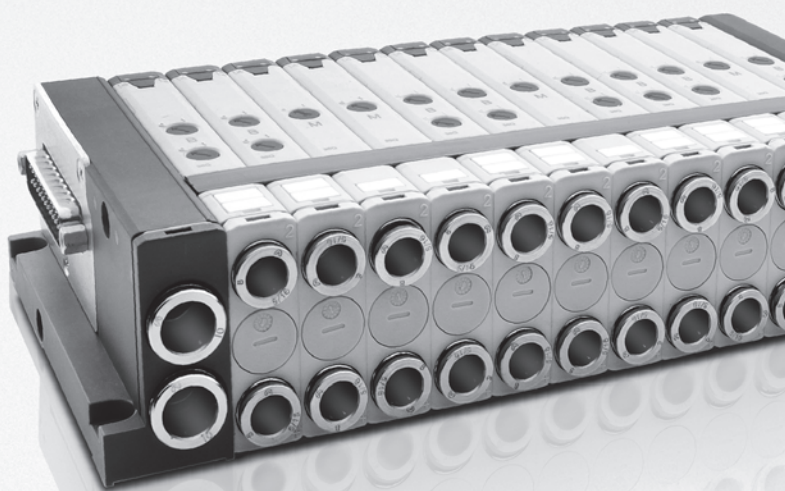
Valve island Series F guarantees the highest reliability in every application where is necessary to maximize the flow rate in reduced spaces.

#### **Mounting flexibility**

The islands have integrated boards and are available with multipole connection with maximum 24 coils.

### *Advantages*

- > High flexibility
- > Simple installation
- > Compact design without any electrical or pneumatic sub-base

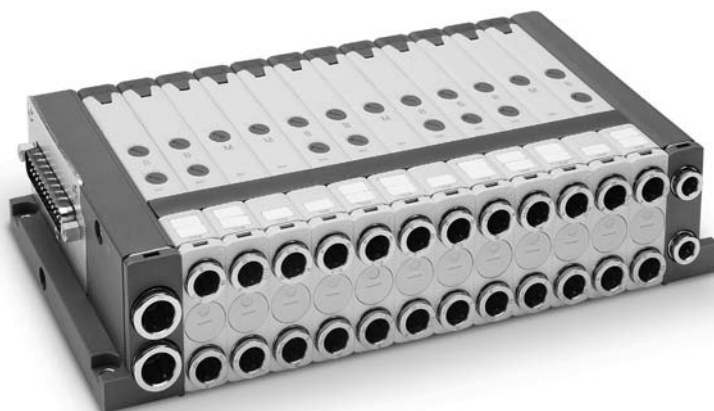


# Valve Islands Series F

Multipole integrated electrical connection (PNP)  
Valve functions: 2x2/2; 2x3/2; 5/2; 5/3 CC

2

CONTROL



The use of technopolymer in this Series has allowed to realize a valve island which is characterized by small dimensions, high flow and reduced weight.

The reduced dimensions, its flexibility during the assembly as well as the wide range of valve functions make Series F a highly innovative product which is suitable for several application requirements.

Compatible connectors:  
see the section "Connectors for Valve Islands" (page 2/3.25.01).

Usable silencers:  
see the section "Silencers"  
(page 2/9.05.03 - Mod. 2939).

- » Valve size: 12 and 14 mm
- » Modularity: single
- » Valve positions: from 2 to 24
- » Manual override: Push or Push & Turn

## GENERAL AND ELECTRICAL CHARACTERISTICS

New

<b>PNEUMATIC SECTION</b>	
Valve construction	spool with seals
Valve functions	5/2 monostable and bistable 5/3 CC 2x2/2 NO 2x2/2 NC 1x2/2 NC + 1x2/2 NO 2x3/2 NO 2x3/2 NC 1x3/2 NC + 1x3/2 NO
Materials	aluminium spool HNBR seals other seals in NBR brass cartridges technopolymer body and end covers
Connections	Inlets 2 and 4, size 1 (12 mm) = tube ø4; ø6 Inlets 2 and 4, size 2 (14 mm) = tube ø4; ø6; ø8 Supply 1, size 1 and 2 = tube ø8; ø10 Servo pilot 12/14, size 1 and 2 = tube ø6 Exhausts 3/5, size 1 and 2 = tube ø8; ø10 Exhausts 82/84, size 1 and 2 = tube ø6
Temperature	0 ÷ 50°C
Air specifications	Filtered air class 5.4.4 according to ISO 8573.1 If lubrication is necessary, we recommend you to use only oils with maximum viscosity of 32 Cst.
Valve sizes	12 mm 14 mm
Working pressure	- 0,9 ÷ 10 bar
Pilot pressure	3 ÷ 7 bar
Flow rate	250 NI/min (12 mm) 500 NI/min (14 mm)
Mounting position	any position
<b>ELECTRIC SECTION</b>	
Voltage	24 V DC +/- 10%
Power consumption	0.6 W per coil
Duty cycle	ED 100%
Protection class (according to EN 60529)	IP40 (with connection plug inserted)
Max number of solenoids	24
Max number of valve positions	24 (monostable)

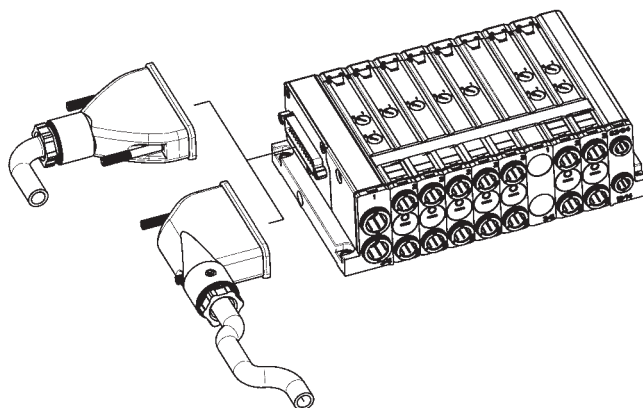
2

CONTROL

## Valve Island Series F - multipole version

New

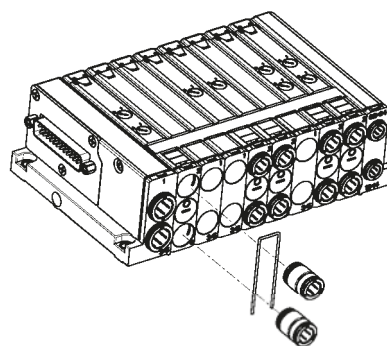
The multipole version can be connected quickly and safely thanks to the pre-wired electrical connection. These connections are available in different versions, with cable of different lengths and in-line or 90° outlets.



## Valve Island Series F - interchangeable connections

New

The cartridge fittings are interchangeable and thanks to a fixing clip one can be substituted with another according to the size of the tube that has to be connected: Ø4 for solenoid valves and Ø6, Ø8 for supply and exhaust.

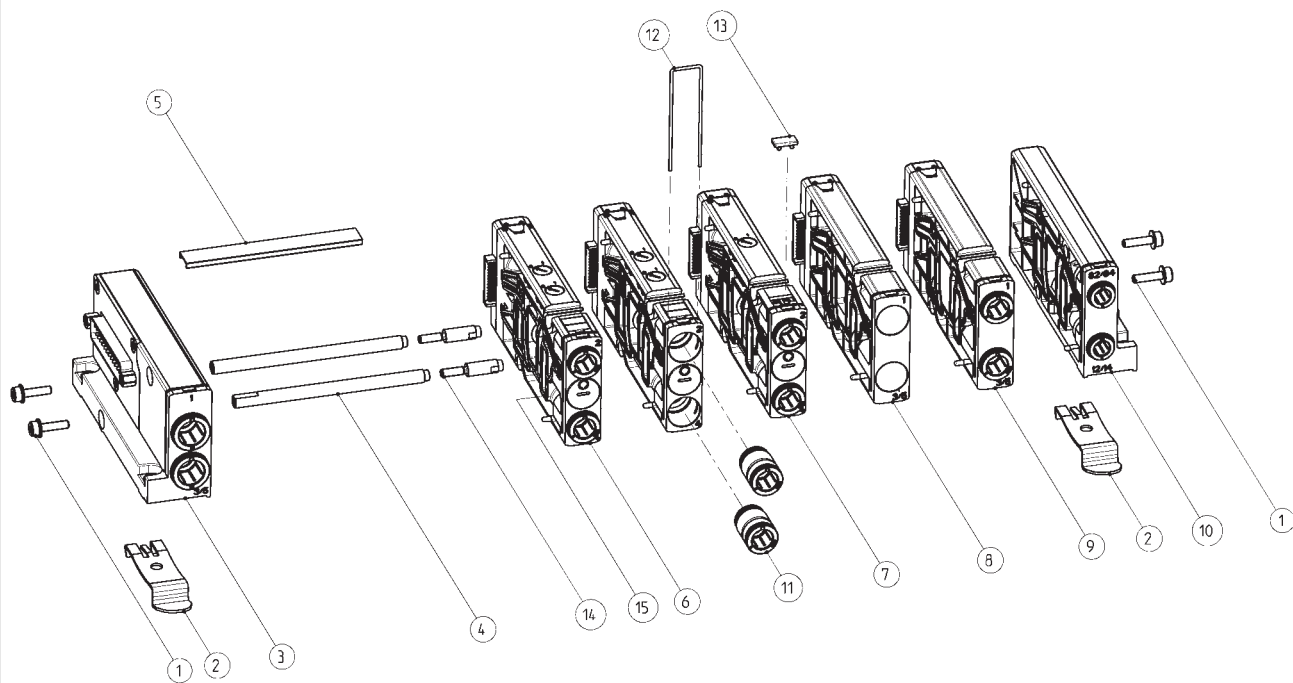


Multipole version - list of components

New

2

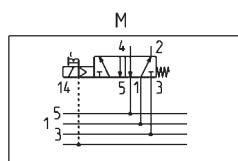
CONTROL



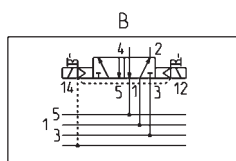
LIST OF COMPONENTS

1	Grip screws with built-in washer
2	Bracket for the DIN rail connection
3	Left terminal
4	Tie-rods
5	Tie-rod plastic cover
6	Bistable solenoid valve
7	Monostable solenoid valve
8	Intermediate plate for free position
9	Intermediate plate for pressure zones with supplementary inlet and exhaust
10	Right terminal
11	Interchangeable cartdrige fittings
12	Fixing clip for the cartdrige fittings
13	Identification plates
14	Joint bolt for odd positions
15	Unloseable interface seal

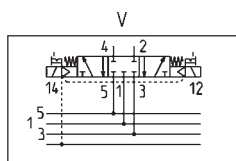


**AVAILABLE FUNCTIONS - SOLENOID VALVES SYMBOLS for version FP..R - push/turn manual override**


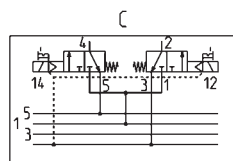
M = 5/2, monostable



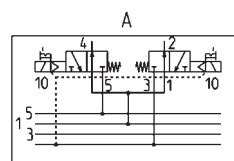
B = 5/2, bistable



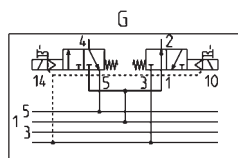
V = 5/3, Centres Closed



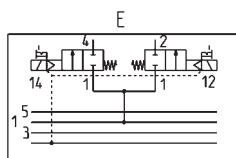
C = 2x3/2 NC



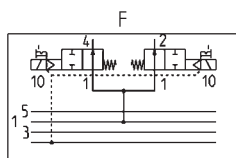
A = 2x3/2 NO



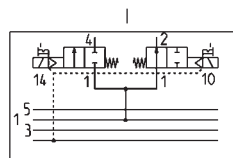
G = 1x3/2 NC + 1x3/2 NO



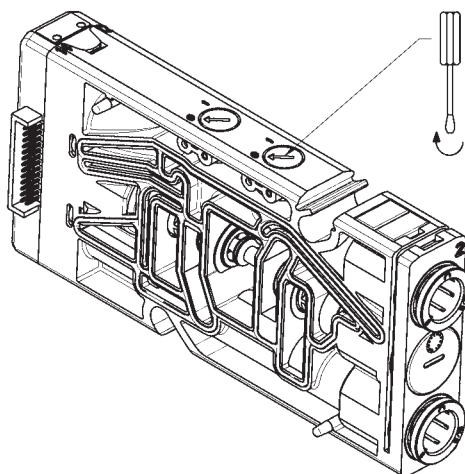
E = 2x2/2 NC



F = 2x2/2 NO

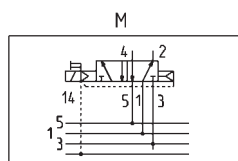


I = 1x2/2 NC + 1x2/2 NO

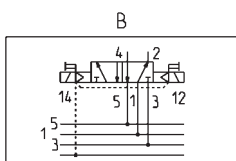


Manual override, version R :  
pressure actuation control with PUSH & TURN device.

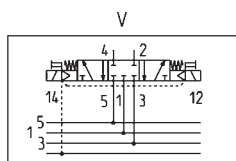


**AVAILABLE FUNCTIONS - SOLENOID VALVES SYMBOLS for version FP..P - push manual override**


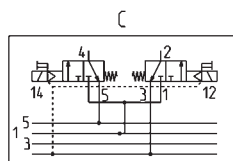
M = 5/2, monostable



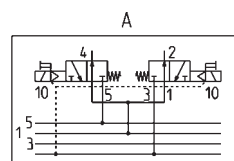
B = 5/2, bistable



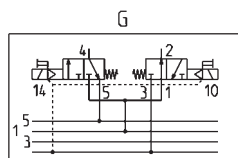
V = 5/3, Centres Closed



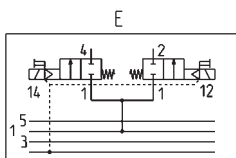
C = 2x3/2 NC



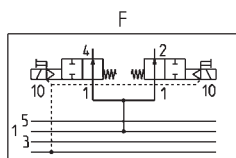
A = 2x3/2 NO



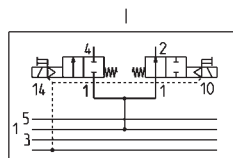
G = 1x3/2 NC + 1x3/2 NO



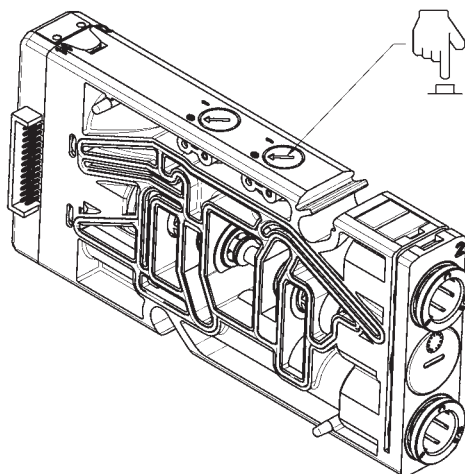
E = 2x2/2 NC



F = 2x2/2 NO



I = 1x2/2 NC + 1x2/2 NO



Manual override, version P :  
pressure actuation control without PUSH & TURN device (PUSH only).

## AVAILABLE FUNCTIONS - INTERMEDIATE AND TERMINALS

New

Example of valve island with differentiated pressures and exhausts.

## DRAWING LEGEND:

A = internal servo-pilot

B = external servo-pilot

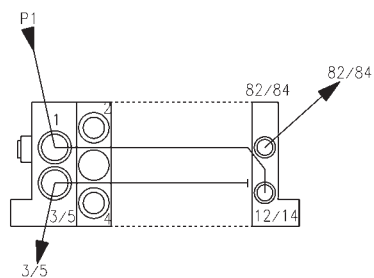
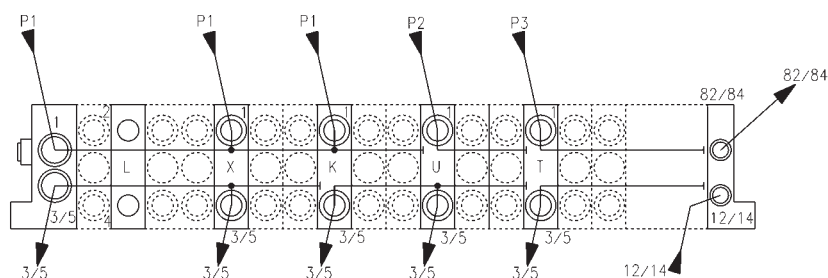
X = supplementary power supply and exhaust

K = supplementary power supply, separated exhaust

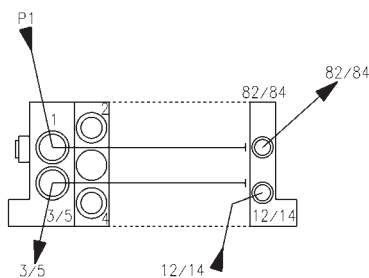
U = separated power supply, supplementary exhaust

T = separated power supply and exhaust

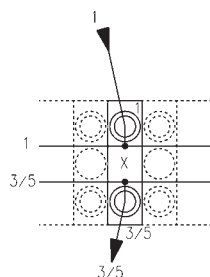
L = free position



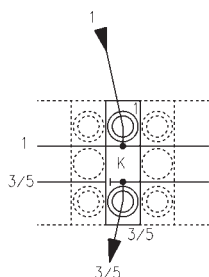
A



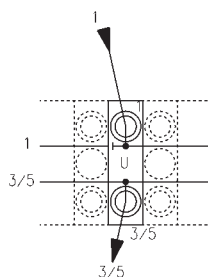
B



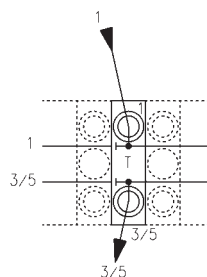
X



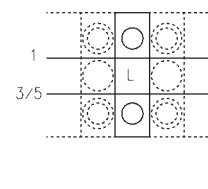
K



U



T

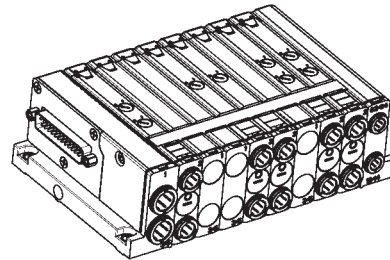


L

## Multipole version - characteristics



- This multipole valve island can be equipped up to the maximum number of 24 solenoids or 24 valve positions (24 monostable).
- Zones with differentiated pressure can be created.
- Available with logic PNP connection.
- Internal electrical wiring on boards.
- Pre-wired cable connection outlets (25 pin).



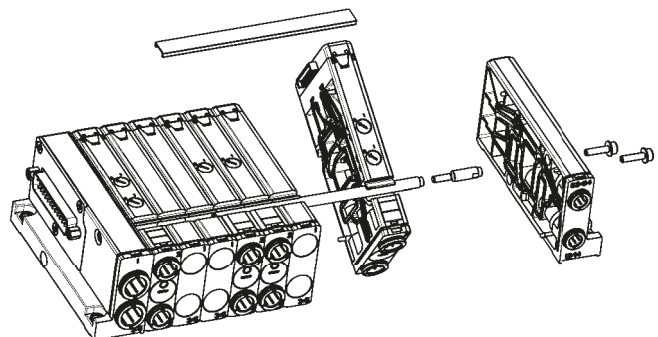
2

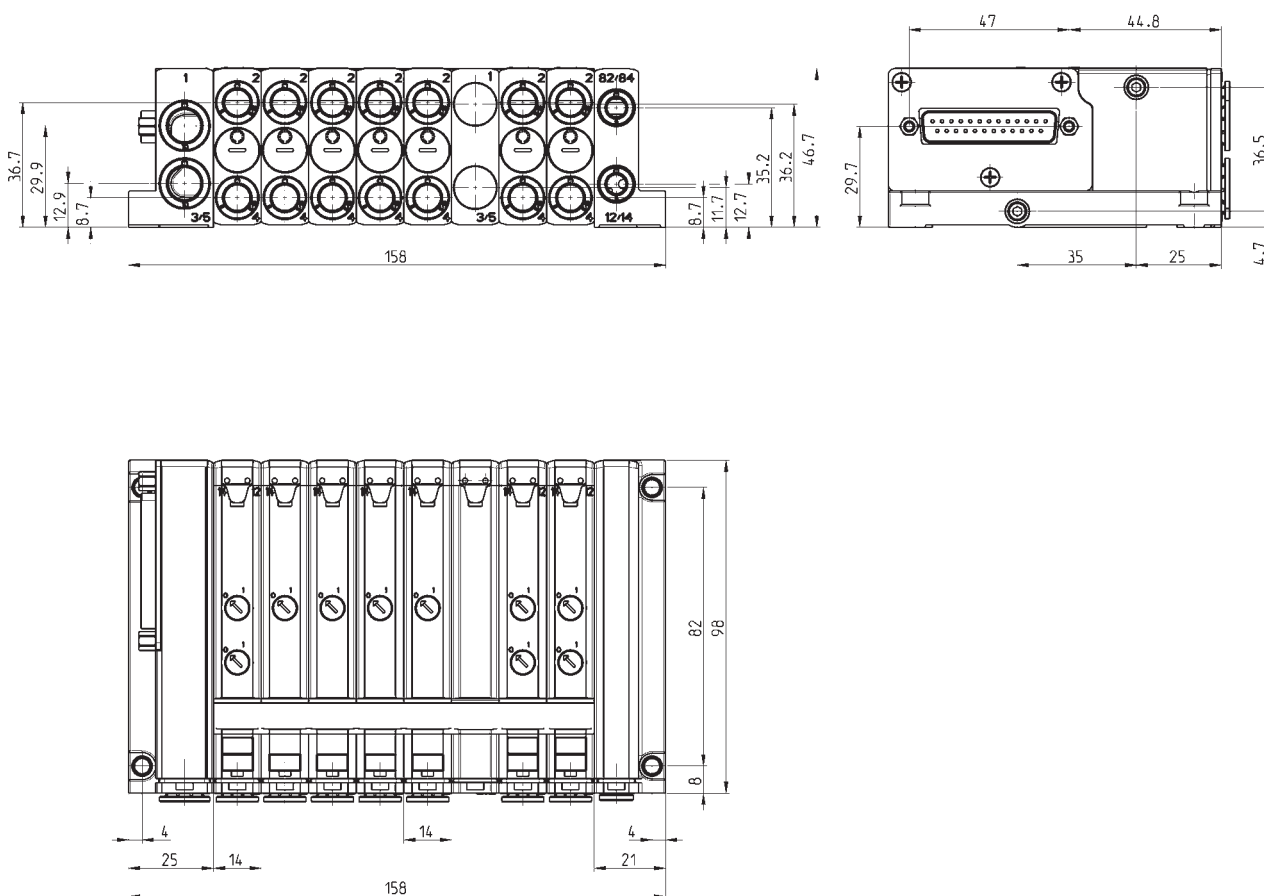
CONTROL

## Multipole version - VALVE ISLAND coding example



- In order to integrate or modify the valve island, it is enough to loosen the tie-rods, separate the valve function that has to be replaced and turn it so that it can be discharged.
- Tie-rods can be supplied with even positions from 2 to 24 (see page 2/3.16.13).
- A single position joint bolt is supplied in case of a valve island with odd positions (see page 2/3.16.13).



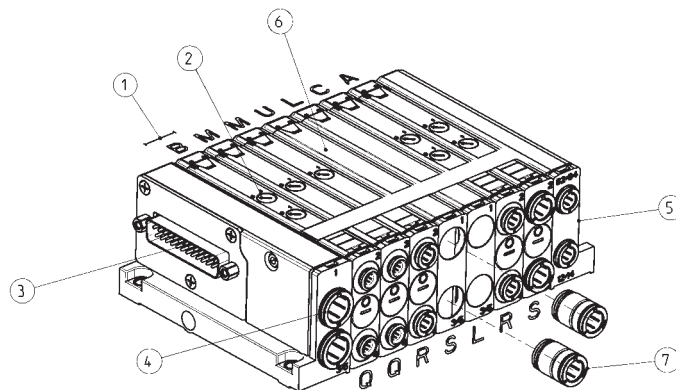


**CODING EXAMPLE - MULTIPOLE VERSION**

<b>F</b>	<b>P</b>	<b>2</b>	<b>R</b>	<b>M</b>	<b>T</b>	<b>A</b>	<b>-</b>	<b>B2MULCA</b>	<b>-</b>	<b>2QRSLRS</b>
----------	----------	----------	----------	----------	----------	----------	----------	----------------	----------	----------------

<b>F</b>	Series
<b>P</b>	Type: P = pneumatic A = accessories
<b>2</b>	Size: 1 = 12 mm 2 = 14 mm
<b>R</b>	Manual override: P = pressure actuation control R = actuation control with push & turn device
<b>M</b>	Electrical connection: M = multipole
<b>T</b>	Cartridges for left terminal: S = tube Ø 8 T = tube Ø 10
<b>A</b>	Type of servo-pilot: A = internal B = external  Note: the cartridges for the right terminal are for tube Ø 6.
<b>-</b>	
<b>B2MULCA</b>	Type of solenoid valves and additional plates *: M = 5/2 monostable B = 5/2 bistable C = 2x3/2 NC A = 2x3/2 NO G = 3/2 NC + 3/2 NO E = 2x2/2 NC F = 2x2/2 NO I = 2/2 NC + 2/2 NO V = 5/3 CC L = free position X = supplementary power supply and exhaust T = separated power supply and exhaust U = separated power supply, supplementary exhaust K = supplementary power supply, separated exhaust
<b>-</b>	
<b>2QRSLRS</b>	Cartridges for solenoid valves and additional plates *: Q = tube Ø 4 R = tube Ø 6 S = tube Ø 8 L = free position
<p>* NOTE: in case of identical and consecutive codes, in the choices " type of solenoid valves and additional plates " and " cartridges for solenoid valves and additional plates ", letters have to be substituted with numbers. With the choice " cartridges for solenoid valves and additional plates " both connections (2 and 4) (1 and 3/5) are defined.</p> <p>Examples: FP2RMTA-MBCCMULMMBB-QQRSSLRRRQRR FP2RMTA-MB2CMUL3M2B-2QR2SL3RQ2R</p>	

## CODING EXAMPLE - MULTIPOLE



1 2 3 4 5      6      7  
 [ F ] [ P ] [   ] [   ] [   ] [   ] - [   ] [   ] [   ] [   ] [   ] [   ] - [   ] [   ] [   ] [   ] [   ] [   ]

1 2 3 4 5      6      7  
 [ F ] [ P ] [ 2 ] [ R ] [ M ] [ T ] [ A ] - [ B ] [ 2 ] [ M ] [ U ] [ L ] [ C ] [ A ] - [ 2 ] [ Q ] [ R ] [ S ] [ L ] [ R ] [ S ]

FP ( 1 )	( 2 )	( 3 )	( 4 )	( 5 )	( 6 )	( 7 )
Size	Manual override	Electrical override	Cartridges for left terminal	Type of servo-pilot	Type of solenoid valve or plate	Cartridges for solenoid valves or plates
<b>1</b> 12 mm	<b>P</b> pressure	<b>M</b> multipole	<b>S</b> Ø8	<b>A</b> internal	<b>M</b> 5/2 monostable	<b>Q</b> Ø4
<b>2</b> 14 mm	<b>R</b> push and turn		<b>T</b> Ø10	<b>B</b> external	<b>B</b> 5/2 bistable	<b>R</b> Ø6
			<b>L</b> free position		<b>C</b> 2x3/2 NO	<b>S</b> Ø8
				<b>A</b>	2x3/2 NO	
				<b>G</b>	3/2 NC + 3/2 NO	
				<b>E</b>	2x2/2 NC	
				<b>F</b>	2x2/2 NO	
				<b>I</b>	2/2 NC + 2/2 NO	
				<b>V</b>	5/3 CC	
				<b>L</b>	free position	
				<b>X</b>	supplementary power supply and exhaust	
				<b>T</b>	separated power supply and exhaust	
				<b>U</b>	separated power supply, supplementary exhaust	
				<b>K</b>	supplementary power supply, separated exhaust	

## CODING EXAMPLES of SINGLE VALVE (spare part) and TERMINALS (accessories)

2

CONTROL

CODING EXAMPLE OF A SOLENOID VALVE			
<b>FP2V-MQR</b>			
<b>F</b>	Series		
<b>P</b>	Type: P = pneumatic		
<b>2</b>	Size: 1 = 12 mm 2 = 14 mm		
<b>V</b>	Solenoid valve or additional plate		
<b>-</b>			
<b>M</b>	Type of function: M = 5/2 monostable B = 5/2 bistable C = 2 x 3/2 NC A = 2 x 3/2 NO G = 3/2 NC + 3/2 NO E = 2 x 2/2 NC F = 2 x 2/2 NO I = 2/2 NC + 2/2 NO V = 5/3 CC L = free position X = supplementary power supply and exhaust T = separated power supply and exhaust U = separated power supply and supplementary exhaust K = supplementary power supply and separated exhaust		
<b>Q</b>	Cartridges dimensions: = no cartridge Q = Ø4 R = Ø6 S = Ø8 (not for size 1)		
<b>R</b>	Type of manual override: R = push and turn (bistable) P = pressure (monostable)		
CODING EXAMPLE OF A LEFT TERMINAL		CODING EXAMPLE OF A RIGHT TERMINAL	
<b>FA2T-S</b>		<b>FA2T-AR</b>	
<b>F</b>	Series	<b>F</b>	Series
<b>A</b>	Accessory	<b>A</b>	Accessory
<b>2</b>	Size: 1 = 12 mm 2 = 14 mm	<b>2</b>	Size: 1 = 12 mm 2 = 14 mm
<b>T</b>	Type of accessory: T = left terminal	<b>T</b>	Type of accessory: T = right terminal
<b>-</b>			
<b>S</b>	Cartridges: = no cartridge S = Ø8 T = Ø10	<b>A</b>	Type of servo-pilot: A = internal B = external
		<b>R</b>	Cartridges: R = Ø6

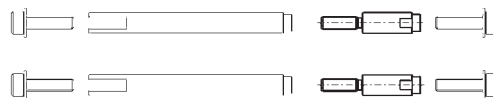


## Tie-rods

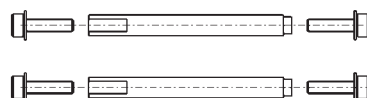
New



FA..K-1



FA..K-2 ↔ FA..K-24



Mod.	Valve positions	
FA2K-2	2	*
FA2K-4	4	*
FA2K-6	6	*
FA2K-8	8	*
FA2K-10	10	*
FA2K-12	12	*
FA2K-14	14	*
FA2K-16	16	*
FA2K-18	18	*
FA2K-20	20	*
FA2K-22	22	*
FA2K-24	24	*
FA2K-1	-	**

\* Tie-rod.  
The supply includes  
2 tie-rods and 4 screws.

\*\* Joint bolt for odd positions.  
The supply includes 2 joint bolts.

## Interchangeable cartridges for valves/plates and for terminals

New



## TABLE LEGEND:

V F1 = solenoid valve or additional plate, size 1

Tdx F1 = right terminal, size 1

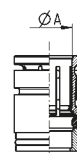
Tsx F1 = left terminal, size 1

V F2 = solenoid valve or additional plate, size 2

Tdx F2 = right terminal, size 2

Tsx F2 = left terminal, size 2

✕ = compatible

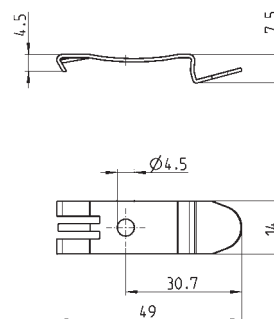


Mod.	ØA	V F1	Tdx F1	Tsx F1	V F2	Tdx F2	Tsx F2
6700 4-F1	4	✕					
6700 4-F2	4				✕		
6700 6-F1	6	✕	✕			✕	
6700 6-F2	6				✕		
6700 8-F1	8			✕			✕
6700 8-F2	8				✕		
6700 10-F1	10			✕			✕

## Bracket for the DIN rail connection

**New**


Supplied with:  
2x fixing elements  
2x screws M4x6 UNI 5931



Mod.

PCF-E520

## Identification plates

**New**


The packaging contains  
45 identification plates 9x45.

Mod.

HP1/E

## Tie-rod plastic cover

**New**


When ordering the cover, specify the length,  
measured in metres.

Mod.

LAMINA-EST-32

**Camozzi spa**  
**Società Unipersonale**  
Via Eritrea, 20/I  
25126 Brescia  
**Italy**  
Tel. +39 030/37921  
Fax +39 030/2400430  
info@camozzi.com  
www.camozzi.com

**Camozzi GmbH Pneumatic**  
Porschestrasse 1  
D-73095 Albershausen  
**Germany**  
Tel. +49 7161/91010-0  
Fax +49 7161/91010-99  
info@camozzi.de  
www.camozzi.de

**Camozzi GmbH Pneumatic**  
Löfflerweg 18  
A-6060 Hall in Tirol  
**Austria**  
Tel. +43 5223/52888-0  
Fax +43 5223/52888-500  
info@camozzi.at  
www.camozzi.at

**Camozzi Pneumatics Ltd.**  
The Fluid Power Centre  
Watling Street  
Nuneaton, Warwickshire  
CV11 6BQ  
**United Kingdom**  
Tel. +44 (0)24/76374114  
Fax +44 (0)24/76347520  
sales@camozzi.co.uk  
www.camozzi.co.uk

**Camozzi Pneumatique Sarl**  
5, Rue Louis Gattefossé  
Parc de la Bandonnière  
69800 Saint Priest  
**France**  
Tel. +33 478/213408  
Fax +33 472/280136  
info@camozzi.fr  
www.camozzi.fr

**Camozzi Benelux B.V.**  
De Vijf Boeken 1 A  
2911 BL Nieuwerkerk a/d IJssel  
**The Netherlands**  
Tel. +31 180/316677  
Fax +31 180/316616  
info@camozzi.nl  
www.camozzi.nl

**Camozzi Pneumatik AB**  
Box 9214  
Bronsyxegatan 7  
20039 Malmö  
**Sweden**  
Tel. +46 40/6005800  
Fax +46 40/6005899  
info@camozzi.se  
www.camozzi.se

**Camozzi Aps**  
Metaltvej 7 F  
4000 Roskilde  
**Denmark**  
Tel. +45 46/750202  
Fax +45 46/750203  
info@camozzi.dk  
www.camozzi.dk

**Camozzi Pneumatic Ltd.**  
Floor 14, Leningradskaya Street, 1-A  
Himki, Moscow Region  
141400 Moskau  
**Russian Federation**  
Tel. +7 495/7354961  
Fax +7 495/7354961  
info@camozzi.ru  
www.camozzi.ru

**Camozzi-Pneumatic-Simferopol, LLC**  
38 Larionova St  
95018 Simferopol  
**Ukraine**  
Tel. +380 652/515700  
Fax +380 652/518198  
info@camozzi.ua  
www.camozzi.ua

**Camozzi Pneumatic**  
Karbusheva St. 9 Off. 412  
246029 Gomel  
**Byelorussia**  
Tel. +375 232/478064  
232/473920 - 232/478417  
Fax +375 232/478417  
camozzi@mail.gomel.by

**Camozzi Pneumatic Kazakhstan LLP**  
Shevchenko/Radostovec,  
165b/72g, off. 503  
050009 Almaty  
**Kazakhstan**  
Tel. +7 727/3335334  
Fax +7 727/3335334  
info@camozzi.kz  
www.camozzi.kz

**Camozzi Pneumatics Inc.**  
2160 Redbud Blvd., TX 75069  
P.O. Box 2386, TX 75070  
McKinney - Texas  
**USA**  
Tel. +1 972/5488885  
Fax +1 972/5482110  
info@camozzi-usa.com  
www.camozzi-usa.com

**Camozzi Neumatica de Mexico S.A. de C.V.**  
Lago Tanganica 707  
Col. Ocho Cedros 2ª sección  
50170 Toluca  
**México**  
Tel. +52 722/2707880  
Fax +52 722/2707860  
camozzi@camozzi.com.mx  
www.camozzi.com/mx

**Camozzi do Brasil Ltda.**  
Rua Estácio de Sá, 1042  
13080-010 Campinas SP  
**Brazil**  
Tel. +55 19/21374500  
Fax +55 19/21374530  
sac@camozzi.com.br  
www.camozzi.com.br

**Camozzi Neumatica S.A.**  
Prof. Dr. Pedro Chutro 3048  
1437 Buenos Aires  
**Argentina**  
Tel. +54 11/49110816  
Fax +54 11/49124191  
info@camozzi.com.ar  
www.camozzi.com/ar

**Camozzi Venezuela S.A.**  
Calle 146 con Av. 62  
N°146-180  
P.O. Box 529  
Zona Industrial Maracaibo  
Edo. Zulia  
**Venezuela**  
Tel. +58 261/7360821  
Fax +58 261/7360401  
info@camozzi.com.ve  
www.camozzi.com.ve

**Camozzi Iran Co. Ltd.**  
Motahari Ave. No. 243  
Teheran  
**Iran**  
Tel. +98 21/88732130  
Fax +98 21/88738552  
general\_secretary@camozziran.com

**Shanghai Camozzi Pneumatic Control Components Co, Ltd.**  
415, Ren De Road  
200434 Shanghai  
**China**  
Tel. +86 21/65363650  
Fax +86 21/65360613  
info@camozzi.com.cn  
www.camozzi.com.cn

**Shanghai Camozzi Automation Control Co, Ltd.**  
717, Shuang Dan Road,  
Malu Town  
201801 Jiading Ind. District  
Shanghai  
**China**  
Tel. +86 21/59100999  
Fax +86 21/59100333  
info@camozzi.com.cn  
www.camozzi.com.cn

**Camozzi India Private Limited**  
No D-44 Phase II Ext.,  
Hosiery Complex  
Noida - 201 305  
Uttar Pradesh  
**India**  
Tel. +91 120/4055252  
Fax +91 120/4055200  
info@camozzi-india.com  
www.camozzi.com/in

**Camozzi Malaysia SDN. BHD.**  
30 & 32, Jalan Industri USJ 1/3  
Taman Perindustrian USJ 1  
47600 Subang Jaya  
Selangor  
**Malaysia**  
Tel. +60 3/80238400  
Fax +60 3/80235626  
camozzijb@myjaring.net  
www.camozzi.com/my

**Camozzi R.O. in Hochiminh City**  
7<sup>th</sup> Fl., 61-61A Tran Quang Dieu St.,  
Ward 13, Dist. 3, HCMC,  
**Vietnam**  
Tel. +84 8/6290 3721  
Fax +84 8/6290 3720  
info@camozzi.com.vn  
www.camozzi.com.vn



# Valve islands Series F

## *What makes us different*

Global vision, local service  
and passion for excellence

- Innovative next-generation products
- Optimisation of internal processes
- Complete and customised solutions
- Focus on product quality and customer service

## *Contacts*

[info@camozzi.com](mailto:info@camozzi.com)



Camozzi spa Design and Development Centre, Polpenazze, Italy

**Camozzi spa**  
**Società Unipersonale**  
Via Eritrea, 20/I  
25126 Brescia - Italy  
Tel. +39 030 37921  
Fax +39 030 3792244  
[info@camozzi.com](mailto:info@camozzi.com)  
[www.camozzi.com](http://www.camozzi.com)

**Technical assistance**  
Products inquiries and  
requests for support:  
Tel. +39 030 3792790  
[service@camozzi.com](mailto:service@camozzi.com)

Special products enquiries:  
Tel. +39 030 3792390  
[service@camozzi.com](mailto:service@camozzi.com)