

# Guided parallel grippers Series CGB

1

Magnetic

Sizes 16 - 20 - 25 - 32



- » Guided mechanism which allows high repeatability
- » Flexibility in installation
- » High gripping force

The proximity switches can be inserted in the U-shaped grooves on the body. For an easier installation the gripper can also be equipped with an optional installation adaptor mod. C-CGP (female) or L-CGP (male).

The guided parallel gripper Series CGB is available in 4 different sizes and is equipped with a guide mechanism that offers high repeatability.

The closing action of the gripper is generated from the cylinder's thrust side, resulting in a higher gripping force. Gripper Series CGB has mounting holes on three sides which provides flexibility in installation.

## GENERAL DATA

|   |   |            |            |            |            |
|---|---|------------|------------|------------|------------|
| <b>Model</b>  | CGB-L-16; CGB-L-20; CGB-L-25; CGB-L-32  |            |            |            |            |
| <b>Bore sizes (mm)</b>                              | Ø16   | Ø 20       | Ø 25       | Ø 32       |            |
| <b>Type of operation</b>                            | double-acting, parallel type  |            |            |            |            |
| <b>Operating pressure (bar)</b>                     | 1.5 + 7 bar   |            |            |            |            |
| <b>Operating temperature</b>                        | 0°C + 80°C  |            |            |            |            |
| <b>Max. operating frequency</b>                     | 180 cycles/min  |            |            |            |            |
| <b>Lubrication</b>                                  | lever section - lubrication required on sliding section   |            |            |            |            |
| <b>Opening stroke (mm)</b>                          | Ø 16 = 6  | Ø 20 = 8   | Ø 25 = 14  | Ø 32 = 16  |            |
| <b>Theoretical holding force* at 5 bar in N</b>     | <b>open</b>   | Ø 16 = 24  | Ø 20 = 47  | Ø 25 = 75  | Ø 32 = 100 |
| <b>with gripping point L = 30mm</b>                 | <b>closed</b>   | Ø 16 = 18  | Ø 20 = 35  | Ø 25 = 60  | Ø 32 = 85  |
| <b>Length. of max. gripping point L mm at 5 bar</b> | 40  | 60         | 80         | 100        |            |
| <b>Weight (g)</b>                                   | Ø 16=160  | Ø 20 = 280 | Ø 25 = 495 | Ø 32 = 785 |            |
| <b>Repeatability</b>                                | +/- 0,01mm  |            |            |            |            |
| <b>Port sizes</b>                                   | M5  |            |            |            |            |
| <b>Fluid</b>  | filtered air, without lubrication. If lubricated air is used, it is recommended to use oil ISO VG32. Once applied, the lubrication should never be interrupted. |            |            |            |            |

## CODING EXAMPLE

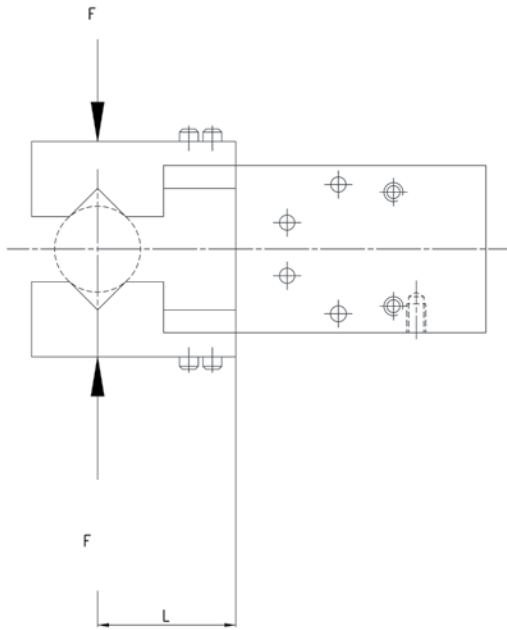
|     |   |   |   |    |
|-----|---|---|---|----|
| CGB | - | L | - | 20 |
|-----|---|---|---|----|

|            |        |
|------------|--------|
| <b>CGB</b> | SERIES |
|------------|--------|

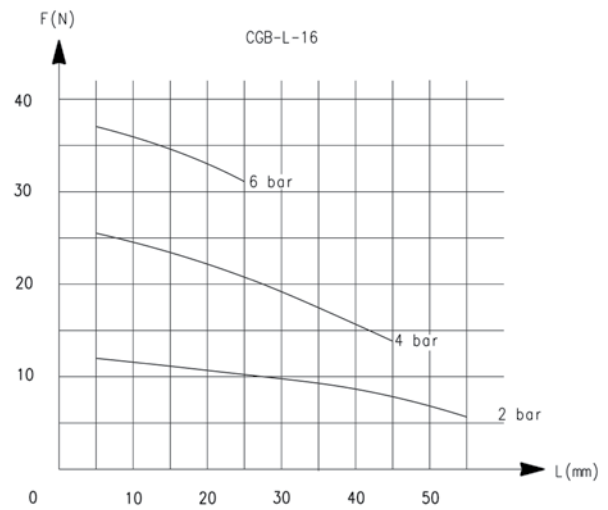
|          |  |
|----------|--|
| <b>L</b> | L = Wide finger position style<br>S = Narrow finger position style (only on request) |
|----------|--|

|           |   |
|-----------|---|
| <b>20</b> | SIZES<br>16 = ø 16 mm<br>20 = ø 20 mm<br>25 = ø 25 mm<br>32 = ø 32 mm |
|-----------|---|

GRIPPING FORCE CHARACTERISTICS

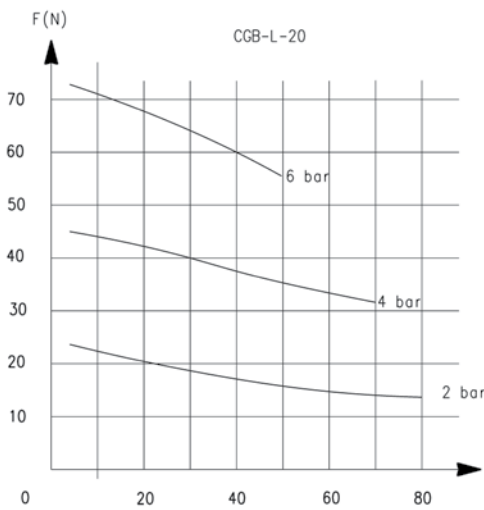


L = Gripping point length  
F = Gripping Force

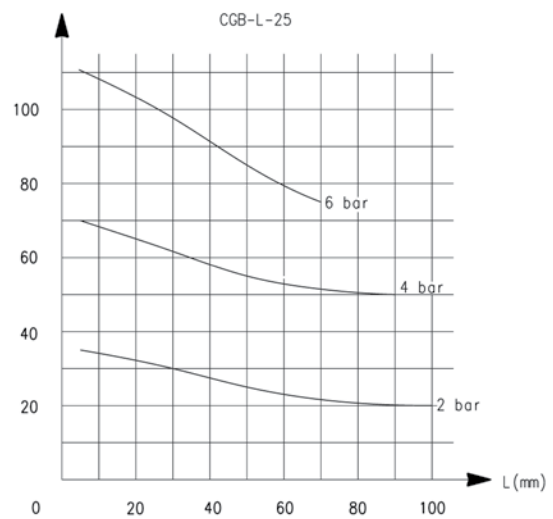


L = Gripping point length  
F = Gripping Force

GRIPPING FORCE CHARACTERISTICS

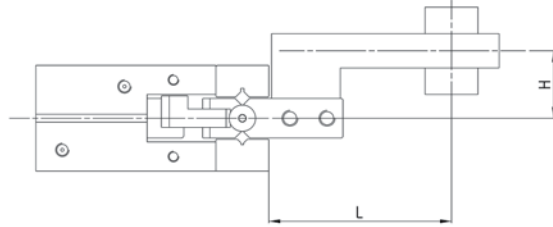
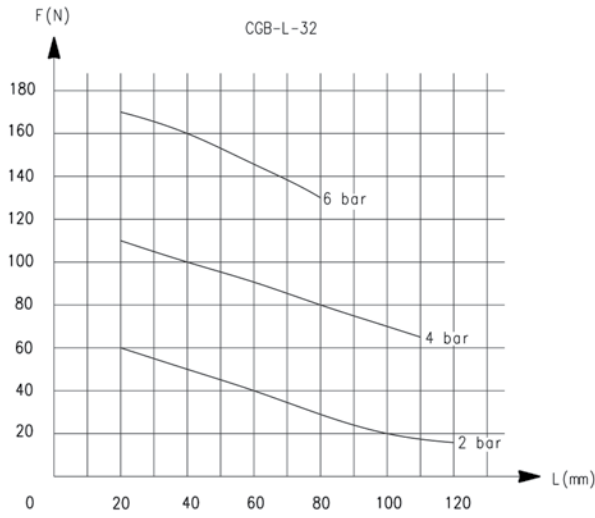


L = Gripping point length  
F = Gripping Force



L = Gripping point length  
F = Gripping Force

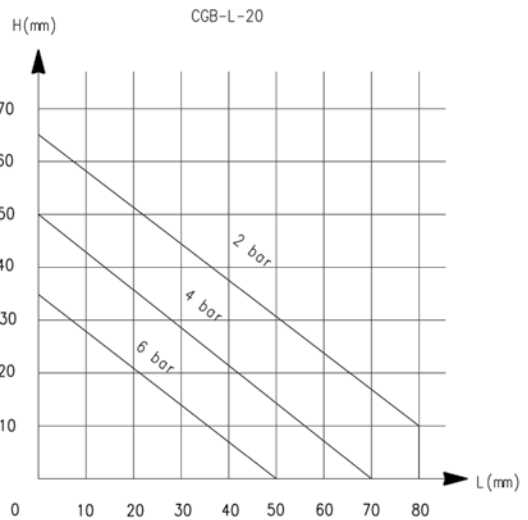
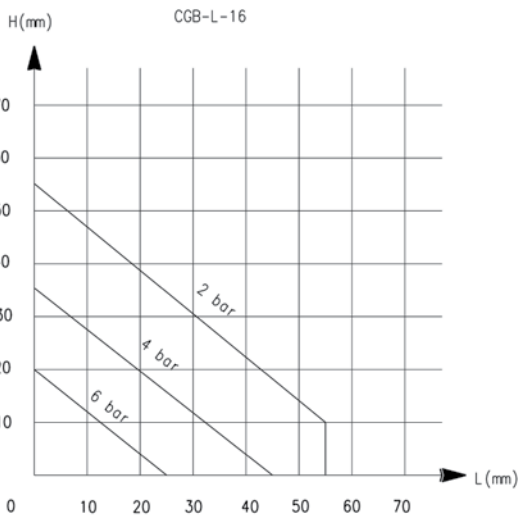
GRIPPING FORCE CHARACTERISTICS



L = Gripping point length  
F = Gripping Force

L = Gripping point length  
F = Gripping Force

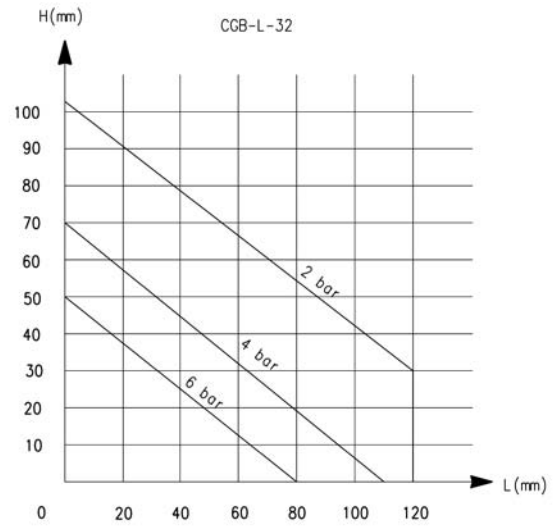
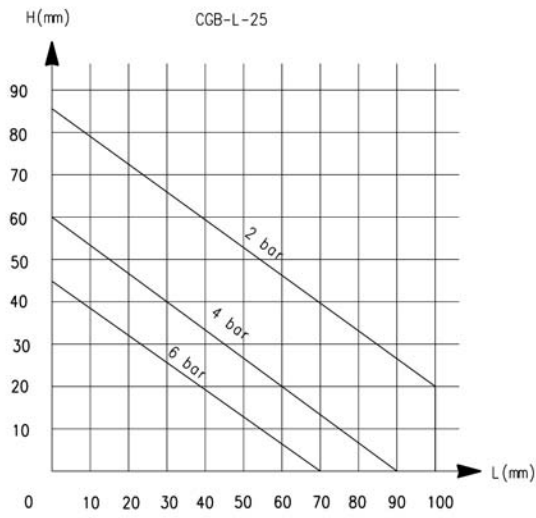
GRIPPING FORCE CHARACTERISTICS



L = Gripping point length  
F = Gripping Force

L = Gripping point length  
F = Gripping Force

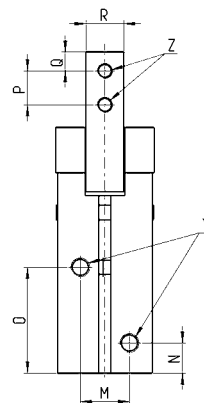
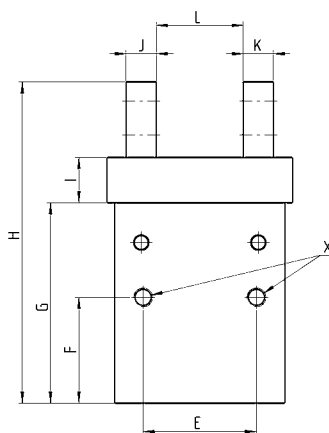
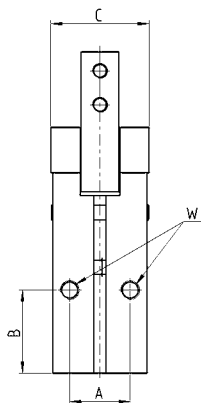
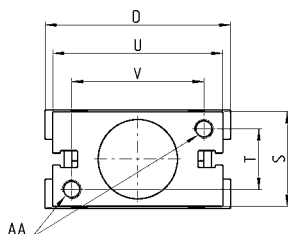
GRIPPING FORCE CHARACTERISTICS



L = Gripping point length  
F = Gripping Force

L = Gripping point length  
F = Gripping Force

Guided parallel grippers Series CGB-L



Y = port connection  
 Z = claw mounting-hole  
 X.W.AA = Mounting hole

DIMENSIONS

| Mod.            | A  | B    | C  | D  | E  | F    | G    | H     | I  | J  | K  | L closed | L open | M  | N   | O    | P  | Q | R  | S  | T  | U  | V  |
|-----------------|----|------|----|----|----|------|------|-------|----|----|----|----------|--------|----|-----|------|----|---|----|----|----|----|----|
| <b>CGB-L-16</b> | 14 | 21   | 22 | 38 | 24 | 25,5 | 45,5 | 72,5  | 12 | 6  | 6  | 18       | 24     | 12 | 7,5 | 25,5 | 7  | 4 | 7  | 22 | 14 | 34 | 26 |
| <b>CGB-L-20</b> | 16 | 22   | 26 | 49 | 30 | 28   | 53   | 85    | 12 | 8  | 8  | 23       | 31     | 13 | 8   | 28   | 9  | 5 | 10 | 26 | 16 | 45 | 35 |
| <b>CGB-L-25</b> | 20 | 24,5 | 32 | 56 | 36 | 31,5 | 63,5 | 104,5 | 16 | 10 | 10 | 20       | 34     | 18 | 9   | 31   | 12 | 6 | 12 | 32 | 20 | 52 | 40 |
| <b>CGB-L-32</b> | 26 | 30   | 40 | 62 | 44 | 37,5 | 68   | 116   | 20 | 10 | 10 | 24       | 40     | 24 | 10  | 33,5 | 14 | 6 | 15 | 40 | 26 | 60 | 46 |

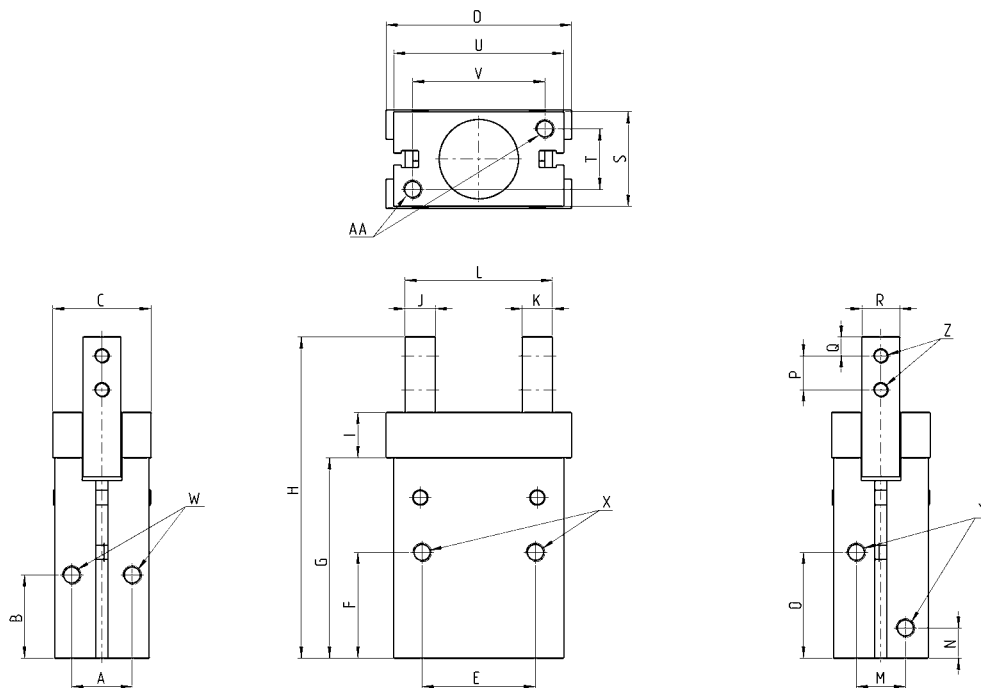
DIMENSIONS

| Mod.            | X thread | X depth | Y thread | Y depth | W thread | W depth | Z thread | Z depth | AA thread | AA depth |
|-----------------|----------|---------|----------|---------|----------|---------|----------|---------|-----------|----------|
| <b>CGB-L-16</b> | M4       | 11      | M5       | 5       | M4       | 7       | M3       | -       | M4        | 7        |
| <b>CGB-L-20</b> | M5       | 13      | M5       | 5       | M5       | 8       | M4       | -       | M5        | 8        |
| <b>CGB-L-25</b> | M6       | 16      | M5       | 5       | M6       | 10      | M5       | -       | M6        | 10       |
| <b>CGB-L-32</b> | M6       | 20      | M5       | 8       | M6       | 10      | M6       | -       | M6        | 10       |



Guided parallel grippers (narrow opening) Series CGB-S

On demand only



DIMENSIONS

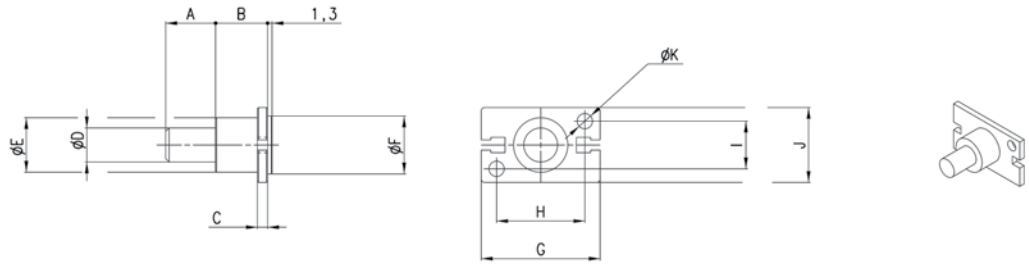
| Mod.            | A  | B    | C  | D  | E  | F    | G    | H     | I  | J  | K  | L closed | L open | M  | N   | O    | P  | Q | R  | S  | T  | U  | V  |
|-----------------|----|------|----|----|----|------|------|-------|----|----|----|----------|--------|----|-----|------|----|---|----|----|----|----|----|
| <b>CGB-S-16</b> | 14 | 21   | 22 | 38 | 24 | 25,5 | 45,5 | 72,5  | 12 | 6  | 6  | 18       | 25     | 12 | 7,5 | 25,5 | 7  | 4 | 7  | 22 | 14 | 34 | 26 |
| <b>CGB-S-20</b> | 16 | 22   | 26 | 49 | 30 | 28   | 53   | 85    | 12 | 8  | 8  | 22,9     | 30,9   | 13 | 8   | 28   | 9  | 5 | 10 | 26 | 16 | 45 | 35 |
| <b>CGB-S-25</b> | 20 | 24,5 | 32 | 56 | 36 | 31,5 | 63,5 | 104,5 | 16 | 10 | 10 | 28,4     | 42     | 18 | 9   | 31   | 12 | 6 | 12 | 32 | 20 | 52 | 40 |
| <b>CGB-S-32</b> | 26 | 30   | 40 | 62 | 44 | 37,5 | 68   | 116   | 20 | 10 | 10 | 28       | 43,5   | 24 | 10  | 33,5 | 14 | 6 | 15 | 40 | 26 | 60 | 46 |

DIMENSIONS

| Mod.            | X thread | X depth | Y thread | Y depth | W thread | W depth | Z thread | Z depth | AA thread | AA depth |
|-----------------|----------|---------|----------|---------|----------|---------|----------|---------|-----------|----------|
| <b>CGB-S-16</b> | M4       | 11      | M5       | 5       | M4       | 7       | M3       | -       | M4        | 7        |
| <b>CGB-S-20</b> | M5       | 13      | M5       | 5       | M5       | 8       | M4       | -       | M5        | 8        |
| <b>CGB-S-25</b> | M6       | 16      | M5       | 5       | M6       | 10      | M5       | -       | M6        | 10       |
| <b>CGB-S-32</b> | M6       | 20      | M5       | 8       | M6       | 10      | M6       | -       | M6        | 10       |

Mounting brackets Mod. L-CGP

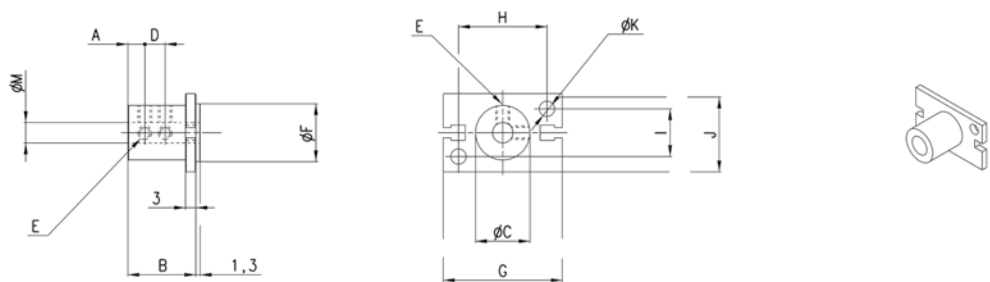
for gripper Series CGA, CGP, CGS and CGB



| Mod.     | A  | B  | C | D  | E  | F  | G  | H  | I  | J  | K   |
|----------|----|----|---|----|----|----|----|----|----|----|-----|
| L-CGP-16 | 15 | 15 | 3 | 10 | 16 | 17 | 35 | 26 | 14 | 22 | 4,5 |
| L-CGP-20 | 15 | 15 | 3 | 10 | 18 | 21 | 46 | 35 | 16 | 26 | 5,5 |
| L-CGP-25 | 25 | 17 | 5 | 14 | 26 | 26 | 53 | 40 | 20 | 32 | 6,6 |
| L-CGP-32 | 25 | 20 | 6 | 16 | 30 | 34 | 61 | 46 | 26 | 40 | 6,6 |

Mounting brackets Mod. C-CGP

for gripper Series CGA, CGP, CGS and CGB



| Mod.     | A  | B    | C  | D  | E  | F  | G  | H  | I  | J  | K   | M  |
|----------|----|------|----|----|----|----|----|----|----|----|-----|----|
| C-CGP-16 | 5  | 20,5 | 16 | 7  | M4 | 17 | 35 | 26 | 14 | 23 | 4,5 | 6  |
| C-CGP-20 | 7  | 25,5 | 20 | 9  | M4 | 21 | 46 | 35 | 16 | 27 | 5,5 | 8  |
| C-CGP-25 | 8  | 30,5 | 25 | 10 | M4 | 26 | 53 | 40 | 20 | 33 | 6,6 | 10 |
| C-CGP-32 | 10 | 40,5 | 32 | 15 | M4 | 34 | 61 | 46 | 26 | 41 | 6,6 | 12 |